

(CLT)3:(CLT) 25051

# CHARLOTTE THREE DEPARTURE

AL-78 (FAA)

CHARLOTTE/DOUGLAS INTL (CLT)  
CHARLOTTE, NORTH CAROLINA

D-ATIS DEP

132.1  
 CLNC DEL  
 127.15 348.6  
 CPDLC  
 GND CON  
 121.8 348.6 (WEST)  
 121.9 348.6 (EAST)  
 CHARLOTTE TOWER  
 118.1 257.8 (Rwys 18L-36R)  
 126.4 257.8 (Rwy 18C-36C)  
 133.35 257.8 (Rwy 18R-36L)

RADAR and DME required.

**TOP ALTITUDE:  
8000**

**CHARLOTTE DEP CON**  
 120.5 257.2 (HARAY, PITY)  
 Transition. Rwys 36L/C

**GREENSBORO**  
 116.2 GSO  
 Chan 109

**LIBERTY**  
 113.0 LIB  
 Chan 77

**SUGARLOAF MOUNTAIN**  
 112.2 SUG  
 Chan 59

**SANDHILLS**  
 111.8 SDZ  
 Chan 55

**PITY**  
 11000  
 \*3900  
 286°  
 (45)

**HARAY**  
 270°  
 8000  
 \*2900  
 (40)

**SPARTANBURG**  
 115.7 SPA  
 Chan 104

**CHARLOTTE**  
 115.0 CLT  
 Chan 97

**CHESTERFIELD**  
 114.55 CTF  
 Chan 92(Y)

**COLUMBIA**  
 114.7 CAE  
 Chan 94

**FLORENCE**  
 115.2 FLO  
 Chan 99

**CHARLOTTE DEP CON**  
 124.0 307.8 (BUCKL, GANTS, LILLS,  
 RUNIE Transition. Rwys 18L/C/R, 36R)

**TAKEOFF MINIMUMS:**  
 Rwys 18L/C/R, 36C/R: Standard.  
 Rwy 36L: Standard with minimum climb of  
 231' per NM to 3600.

- NOTE: For turbo jet aircraft requesting at or below 10000' only.
- NOTE: Accelerate to 250K, if unable, advise ATC.
- NOTE: Transponder code will be issued via PDC or Charlotte clearance delivery.
- NOTE: If unable to accept climb rate, advise ATC on initial contact.

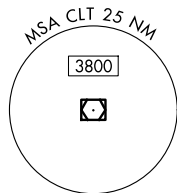
NOTE: Chart not to scale.

(CONTINUED ON FOLLOWING PAGE)

# CHARLOTTE THREE DEPARTURE

(CLT)3:(CLT) 10AUG23

CHARLOTTE, NORTH CAROLINA  
CHARLOTTE/DOUGLAS INTL (CLT)



SE-2, 16 APR 2026 to 14 MAY 2026

SE-2, 16 APR 2026 to 14 MAY 2026

(CLT3:CLT) 23222

CHARLOTTE THREE DEPARTURE AL-78 (FAA)

CHARLOTTE/DOUGLAS INTL (CLT)  
CHARLOTTE, NORTH CAROLINA

## DEPARTURE ROUTE DESCRIPTION

TAKEOFF RUNWAY 18C: Climb on heading 183° until passing CLT VOR/DME 1.6 DME, then turn right heading 200°, Thence. . . .

TAKEOFF RUNWAY 18L: Climb on heading 183°, Thence. . . .

TAKEOFF RUNWAY 18R: Climbing right turn heading 200°, Thence. . . .

TAKEOFF RUNWAY 36C: Climb on heading 003° to 1400 then left turn heading 330°, Thence. . . .

TAKEOFF RUNWAY 36L: Climbing left turn heading 315°, Thence. . . .

TAKEOFF RUNWAY 36R: Climbing right turn heading 025°, Thence. . . .

. . . .expect RADAR vectors to intercept filed/assigned transition or enroute fix/navaid. Maintain 8000. Expect clearance to filed altitude/flight level within ten (10) minutes after departure.

BUCKL TRANSITION (CLT3.BUCKL): From over CLT VOR/DME to BUCKL.

GANTS TRANSITION (CLT3.GANTS): From over CLT VOR/DME to GANTS.

HARAY TRANSITION (CLT3.HARAY): From over CLT VOR/DME to HARAY.

LILLS TRANSITION (CLT3.LILLS): From over CLT VOR/DME to LILLS.

PITTY TRANSITION (CLT3.PITTY): From over CLT VOR/DME to PITTY.

RUNIE TRANSITION (CLT3.RUNIE): From over CLT VOR/DME to RUNIE.

SE-2, 16 APR 2026 to 14 MAY 2026

SE-2, 16 APR 2026 to 14 MAY 2026

CHARLOTTE THREE DEPARTURE

(CLT3:CLT) 10AUG23

CHARLOTTE, NORTH CAROLINA  
CHARLOTTE/DOUGLAS INTL (CLT)

(CLT 4) (CLT) 26134

(AL-78 (FAA))

CHARLOTTE/DOUGLAS INTL (CLT)  
CHARLOTTE, NORTH CAROLINA

# CHARLOTTE FOUR DEPARTURE

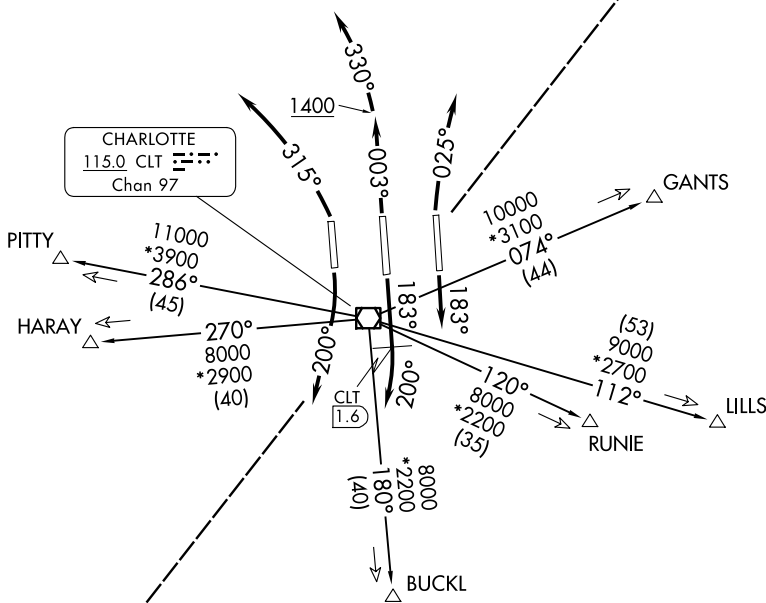
D-ATIS DEP  
132.1  
CLNC DEL  
127.15 348.6  
CPDLC  
GND CON  
121.8 348.6 (W)  
121.9 348.6 (E)  
CHARLOTTE TOWER  
118.1 257.8 (18L-36R)  
126.4 257.8 (18C-36C)  
133.35 257.8 (1L-19R)

RADAR and DME required.

**TOP ALTITUDE:  
8000**

NOTE: Turbojets only requesting at or below 10000' only.  
NOTE: Accelerate to 250K, if unable, advise ATC.  
NOTE: Transponder code will be issued via PDC or Charlotte Clearance Delivery.  
NOTE: If unable to accept climb rate, advise ATC on initial contact.

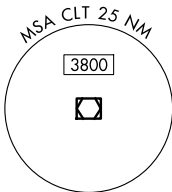
CHARLOTTE DEP CON  
120.5 257.2 (HARAY, PITY)  
Transition. 1L, 36C



CHARLOTTE  
115.0 CLT  
Chan 97

CHARLOTTE DEP CON  
124.0 307.8 (BUCKL, GANTS, LILLS,  
RUNIE Transition. 18L/C, 19R, 36R)

**TAKEOFF MINIMUMS:**  
Rwys 18L/C, 19R, 36C/R: Standard.  
Rwy 1L: Standard with minimum climb of 231'/NM to 3600.



NOTE: Chart not to scale.

(CONTINUED ON FOLLOWING PAGE)

# CHARLOTTE FOUR DEPARTURE

(CLT 4) (CLT) 14MAY26

CHARLOTTE, NORTH CAROLINA  
CHARLOTTE/DOUGLAS INTL (CLT)

SE-2, 14 MAY 2026 to 11 JUN 2026

SE-2, 14 MAY 2026 to 11 JUN 2026

(CLT4) CLT 26134

AL-78 (FAA)

CHARLOTTE FOUR DEPARTURE

CHARLOTTE/DOUGLAS INTL (CLT)  
CHARLOTTE, NORTH CAROLINA

## DEPARTURE ROUTE DESCRIPTION

TAKEOFF RUNWAY 1L: Climbing left turn heading 315°, thence. . .

TAKEOFF RUNWAY 18L: Climb on heading 183°, thence. . .

TAKEOFF RUNWAY 18C: Climb on heading 183° until passing CLT VOR/DME 1.6 DME, then turn right heading 200°, thence. . .

TAKEOFF RUNWAY 19R: Climbing right turn heading 200°, thence. . .

TAKEOFF RUNWAY 36C: Climb on heading 003° to 1400 then left turn heading 330°, thence. . .

TAKEOFF RUNWAY 36R: Climbing right turn heading 025°, thence. . .

. . . on RADAR vectors to intercept filed/assigned transition or enroute fix/navaid. Maintain 8000. Expect filed altitude 10 minutes after departure.

BUCKL TRANSITION (CLT4.BUCKL): From over CLT VOR/DME to BUCKL.

GANTS TRANSITION (CLT4.GANTS): From over CLT VOR/DME to GANTS.

HARAY TRANSITION (CLT4.HARAY): From over CLT VOR/DME to HARAY.

LILLS TRANSITION (CLT4.LILLS): From over CLT VOR/DME to LILLS.

PITTY TRANSITION (CLT4.PITTY): From over CLT VOR/DME to PITTY.

RUNIE TRANSITION (CLT4.RUNIE): From over CLT VOR/DME to RUNIE.

SE-2, 14 MAY 2026 to 11 JUN 2026

SE-2, 14 MAY 2026 to 11 JUN 2026

CHARLOTTE FOUR DEPARTURE

(CLT4) CLT 14MAY26

CHARLOTTE, NORTH CAROLINA  
CHARLOTTE/DOUGLAS INTL (CLT)