

CHSLY SEVEN ARRIVAL (RNAV) Transition Routes

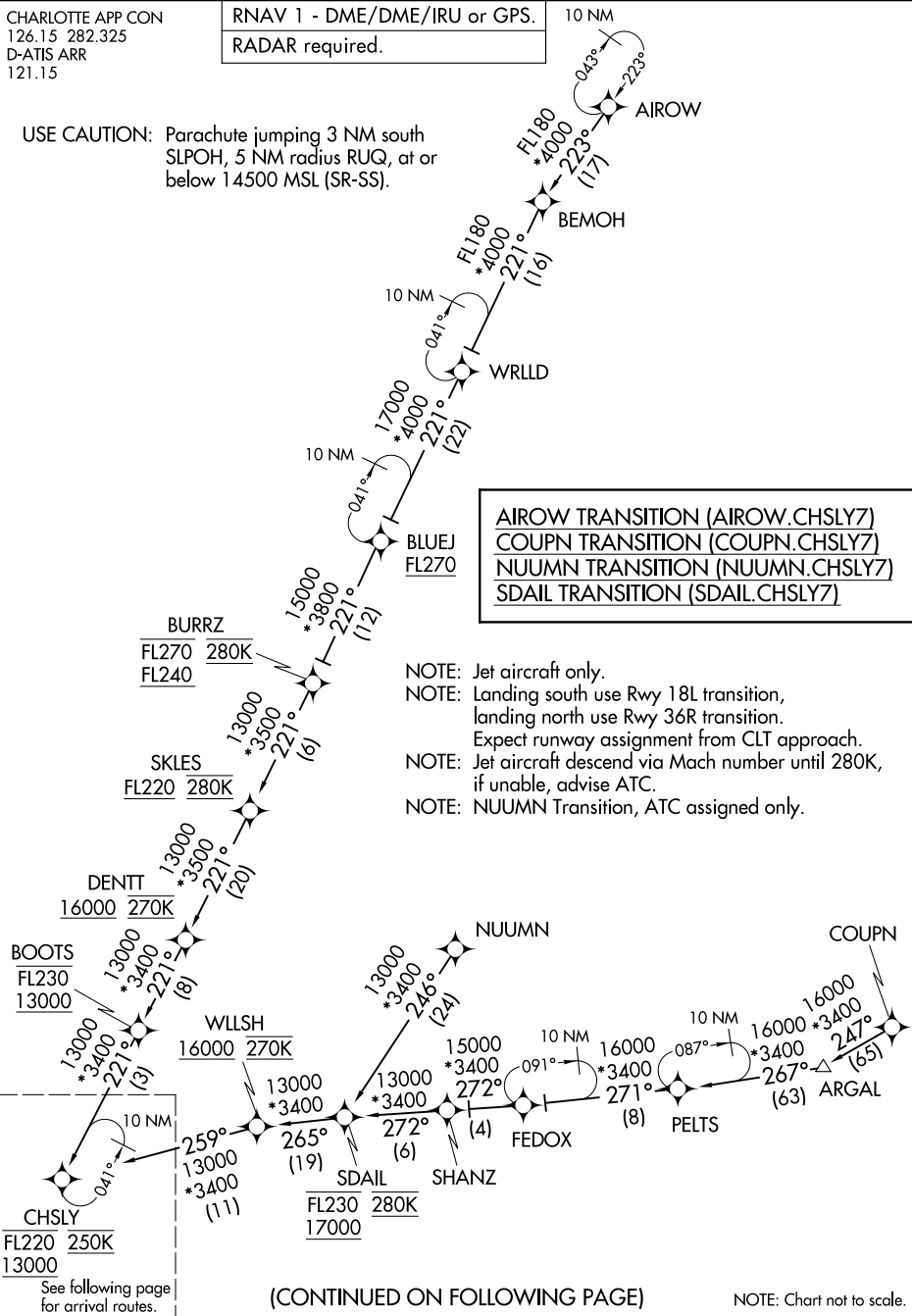
CHARLOTTE APP CON
126.15 282.325
D-ATIS ARR
121.15

RNAV 1 - DME/DME/IRU or GPS.

RADAR required.

10 NM

USE CAUTION: Parachute jumping 3 NM south
SLPOH, 5 NM radius RUG, at or
below 14500 MSL (SR-SS).



AIROW TRANSITION (AIROW.CHSLY7)
COUPN TRANSITION (COUPN.CHSLY7)
NUUMN TRANSITION (NUUMN.CHSLY7)
SDAIL TRANSITION (SDAIL.CHSLY7)

- NOTE: Jet aircraft only.
 NOTE: Landing south use Rwy 18L transition,
 landing north use Rwy 36R transition.
 Expect runway assignment from CLT approach.
 NOTE: Jet aircraft descend via Mach number until 280K,
 if unable, advise ATC.
 NOTE: NUUMN Transition, ATC assigned only.

(CONTINUED ON FOLLOWING PAGE)

NOTE: Chart not to scale.

SE-2, 14 MAY 2026 to 11 JUN 2026

SE-2, 14 MAY 2026 to 11 JUN 2026

(CHSLY.CHSLY7) 26134

AL-78 (FAA)

CHARLOTTE/DOUGLAS INTL (CLT)
CHARLOTTE, NORTH CAROLINA

CHSLY SEVEN ARRIVAL (RNAV) Arrival Routes

CHARLOTTE APP CON
126.15 282.325
D-ATIS ARR
121.15

RNAV 1 - DME/DME/IRU or GPS.

RADAR required.

CHSLY
FL220 250K
13000

KRISS
12000
11000

SLPOH
FL210
11000

HEELZ
6000 210K

Ldg Rwy 18L/C, 19R

MID-CAROLINA RGNL

NODEW
9000 230K
8000

JAMGO
16000
10000

WHIZE
12000 250K
10000

CAATT
10000 210K

EPAYE
Ldg Rwy 1L, 36C/R

- NOTE: Jet aircraft only.
- NOTE: Landing south use Rwy 18L transition, landing north use Rwy 36R transition. Expect runway assignment from CLT approach.
- NOTE: Jet aircraft descend via Mach number until 280K, if unable, advise ATC.
- NOTE: NUUMN Transition, ATC assigned only.

USE CAUTION: Parachute jumping 3 NM south SLPOH, 5 NM radius RUQ, at or below 14500 MSL (SR-SS).

(CONTINUED ON FOLLOWING PAGE)

NOTE: Chart not to scale.

CHSLY SEVEN ARRIVAL (RNAV) Arrival Routes

(CHSLY.CHSLY7) 14MAY26

CHARLOTTE, NORTH CAROLINA
CHARLOTTE/DOUGLAS INTL (CLT)

SE-2, 14 MAY 2026 to 11 JUN 2026

SE-2, 14 MAY 2026 to 11 JUN 2026

CHSLY SEVEN ARRIVAL (RNAV)

ARRIVAL ROUTE DESCRIPTION

LANDING RUNWAYS 1L, 36C/R: From CHSLY on track 220° to cross SLPOH between 11000 and FL210, then on track 219° to cross JAMGO between 10000 and 16000, then on track 218° to cross WHIZE between 10000 and 12000 and at 250K, then on track 218° to cross CAATT at 10000 and at 210K, then on track 183° to EPAYE, then on track 183°. Expect RADAR vectors to final approach course.

LANDING RUNWAYS 18L/C, 19R: From CHSLY on track 225° to cross KRISS between 11000 and 12000, then on track 204° to cross NODEW between 8000 and 9000 and at 230K, then on track 276° to cross HEELZ at 6000 and at 210K, then on track 270°. Expect RADAR vectors to final approach course.

SE-2, 14 MAY 2026 to 11 JUN 2026

SE-2, 14 MAY 2026 to 11 JUN 2026