

# ESTRR SIX DEPARTURE (RNAV)

SE-2, 14 MAY 2026 to 11 JUN 2026

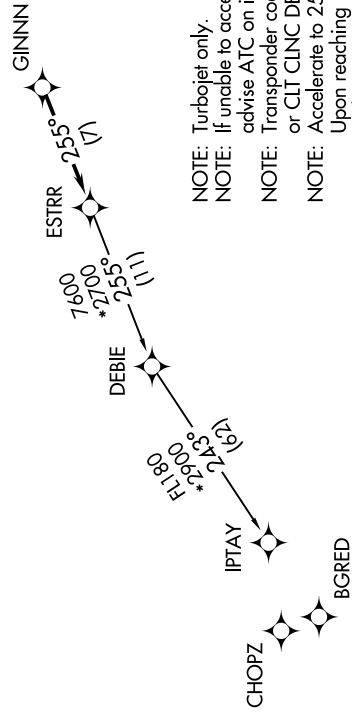
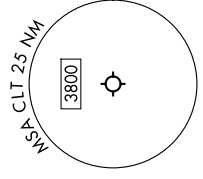
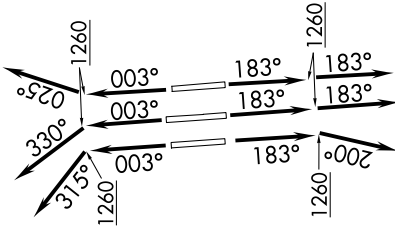
RNAV 1 - DME/DME/IRU or GPS.  
RADAR required.

CHARLOTTE DEP CON  
120.5 257.2  
D-ATIS DEP  
132.1  
CLNC DEL  
127.15 348.6  
CPDLC  
GND CON  
121.8 348.6 (W)  
121.9 348.6 (E)  
CHARLOTTE TOWER  
118.1 257.8 (18L-36R)  
126.4 257.8 (18C-36C)  
133.35 257.8 (1L-19R)

### TAKEOFF MINIMUMS

Rwys 18L/C, 19R, 36C/R: Standard with minimum climb of 500'/NM to 1260.  
Rwy 1L: Standard with minimum climb of 500'/NM to 1400.

TOP ALTITUDE:  
8000



- NOTE: Turbojet only.
- NOTE: If unable to accept climb rates, advise ATC on initial contact.
- NOTE: Transponder code will be issued via PDC or CLT CLNC DEL
- NOTE: Accelerate to 250K, if unable advise ATC. Upon reaching 10000 MSL, accelerate to and maintain 280K, if unable advise ATC.

NOTE: Chart not to scale.

(CONTINUED ON FOLLOWING PAGE)

SE-2, 14 MAY 2026 to 11 JUN 2026

**ESTRR SIX DEPARTURE (RNAV)**



**DEPARTURE ROUTE DESCRIPTION**  
**SEE ADDITIONAL REQUIREMENTS ON AAUP**

TAKEOFF RUNWAY 1L: Climb on heading 003° to 1260, then on heading 315° or as assigned by ATC for RADAR vectors to GINNN, thence. . .

TAKEOFF RUNWAYS 18L/C: Climb on heading 183° to 1260, then on heading 183° or as assigned by ATC for RADAR vectors to GINNN, thence. . .

TAKEOFF RUNWAY 19R: Climb on heading 183° to 1260, then on heading 200° or as assigned by ATC for RADAR vectors to GINNN, thence. . .

TAKEOFF RUNWAY 36C: Climb on heading 003° to 1260, then on heading 330° or as assigned by ATC for RADAR vectors to GINNN, thence. . .

TAKEOFF RUNWAY 36R: Climb on heading 003° to 1260, then on heading 025° or as assigned by ATC for RADAR vectors to GINNN, thence. . .

. . .on track 255° to ESTRR, then on IPTAY Transition. Maintain 8000. Expect filed altitude 10 minutes after departure.

**IPTAY TRANSITION (ESTRR6.IPTAY)**

SE-2, 14 MAY 2026 to 11 JUN 2026

SE-2, 14 MAY 2026 to 11 JUN 2026