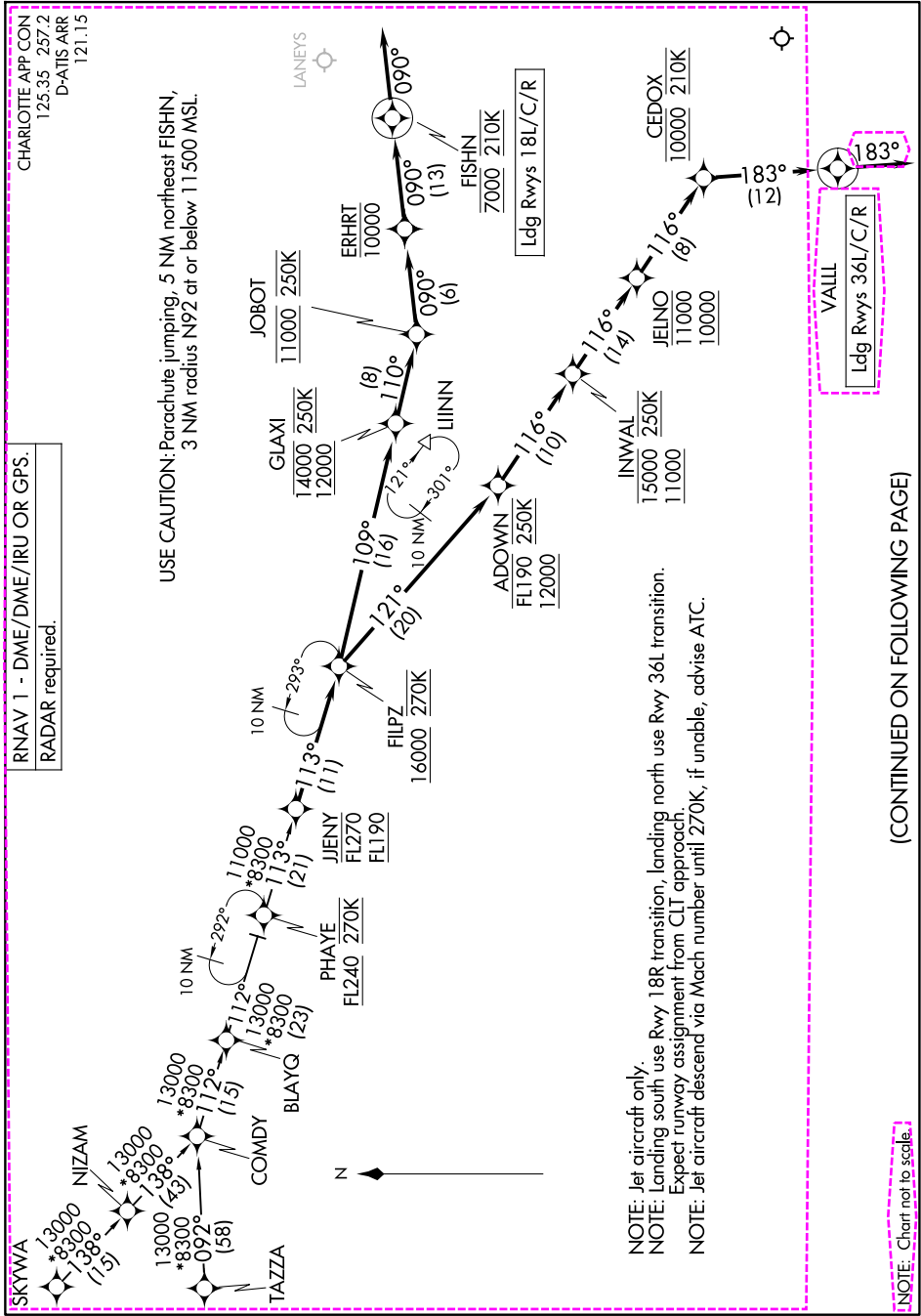


(JJENY.FILPZ4) 24137

AL-78 (FAA)

CHARLOTTE/DOUGLAS INTL (CLT)  
CHARLOTTE, NORTH CAROLINA

# FILPZ FOUR ARRIVAL (RNAV)



SE-2, 16 APR 2026 to 14 MAY 2026

(CONTINUED ON FOLLOWING PAGE)

SE-2, 16 APR 2026 to 14 MAY 2026

FILPZ FOUR ARRIVAL (RNAV)  
(JJENY.FILPZ4) 16MAY24

CHARLOTTE, NORTH CAROLINA  
CHARLOTTE/DOUGLAS INTL (CLT)

(JJENY.FILPZ4) 24137

AL-78 (FAA)

CHARLOTTE/DOUGLAS INTL (CLT)  
CHARLOTTE, NORTH CAROLINA

**FILPZ FOUR ARRIVAL (RNAV)**

**ARRIVAL ROUTE DESCRIPTION**

COMDY TRANSITION (COMDY.FILPZ4)  
SKYWA TRANSITION (SKYWA.FILPZ4)  
TAZZA TRANSITION (TAZZA.FILPZ4)

From JJENY on track 113° to cross FILPZ at or above 16000 and at 270K.

LANDING RUNWAYS 18L/C/R: From FILPZ on track 109° to cross GLAXI between 12000 and 14000 and at 250K, then on track 110° to cross JOBOT at 11000 and at 250K, then on track 090° to cross ERHRT at or below 10000, then on track 090° to cross FISHN at 7000 and at 210K, then on track 090°. Expect RADAR vectors to final approach course.

LANDING RUNWAYS 36L/C/R: From FILPZ on track 121° to cross ADOWN between 12000 and FL190 and at 250K, then on track 116° to cross INWAL between 11000 and 15000 and at 250K, then on track 116° to cross JELNO between 10000 and 11000, then on track 116° to cross CEDOX at 10000 and at 210K, then on track 183° to VALLL, then on track 183°. Expect RADAR vectors to final approach course.

SE-2, 16 APR 2026 to 14 MAY 2026

SE-2, 16 APR 2026 to 14 MAY 2026

**FILPZ FOUR ARRIVAL (RNAV)**  
(JJENY.FILPZ4) 16MAY24

CHARLOTTE, NORTH CAROLINA  
CHARLOTTE/DOUGLAS INTL (CLT)



(JJENY.FILPZ5) 26134

AL-78 (FAA)

CHARLOTTE/DOUGLAS INTL (CLT)  
CHARLOTTE, NORTH CAROLINA

**FILPZ FIVE ARRIVAL (RNAV)**

**ARRIVAL ROUTE DESCRIPTION**

COMDY TRANSITION (COMDY.FILPZ5)

SKYWA TRANSITION (SKYWA.FILPZ5)

TAZZA TRANSITION (TAZZA.FILPZ5)

From JJENY on track 113° to cross FILPZ at or above 16000 and at 270K.

LANDING RUNWAYS 1L, 36C/R: From FILPZ on track 121° to cross ADOWN between 12000 and FL190 and at 250K, then on track 116° to cross INWAL between 11000 and 15000 and at 250K, then on track 116° to cross JELNO between 10000 and 11000, then on track 116° to cross CEDOX at 10000 and at 210K, then on track 183° to VALL, then on track 183°. Expect RADAR vectors to final approach course.

LANDING RUNWAYS 18L/C, 19R: From FILPZ on track 109° to cross GLAXI between 12000 and 14000 and at 250K, then on track 110° to cross JOBOT at 11000 and at 250K, then on track 090° to cross ERHRT at or below 10000, then on track 090° to cross FISHN at 7000 and at 210K, then on track 090°. Expect RADAR vectors to final approach course.

SE-2, 14 MAY 2026 to 11 JUN 2026

SE-2, 14 MAY 2026 to 11 JUN 2026

**FILPZ FIVE ARRIVAL (RNAV)**

(JJENY.FILPZ5) 14MAY26

CHARLOTTE, NORTH CAROLINA  
CHARLOTTE/DOUGLAS INTL (CLT)