

LOC/DME I-RGS 110.15 Chan 38(Y)	APP CRS 183°	Rwy Ldg TDZE 744 Apt Elev 748	9000
--	------------------------	---	-------------

ILS RWY 18R (CAT II & III)

CHARLOTTE/DOUGLAS INTL (CLT)

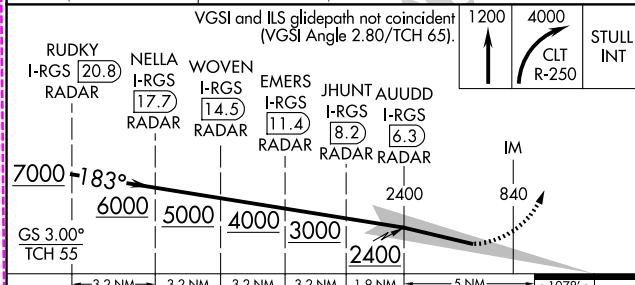
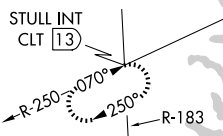
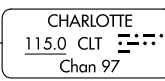
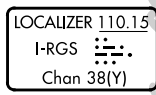
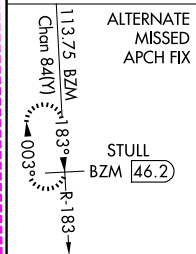
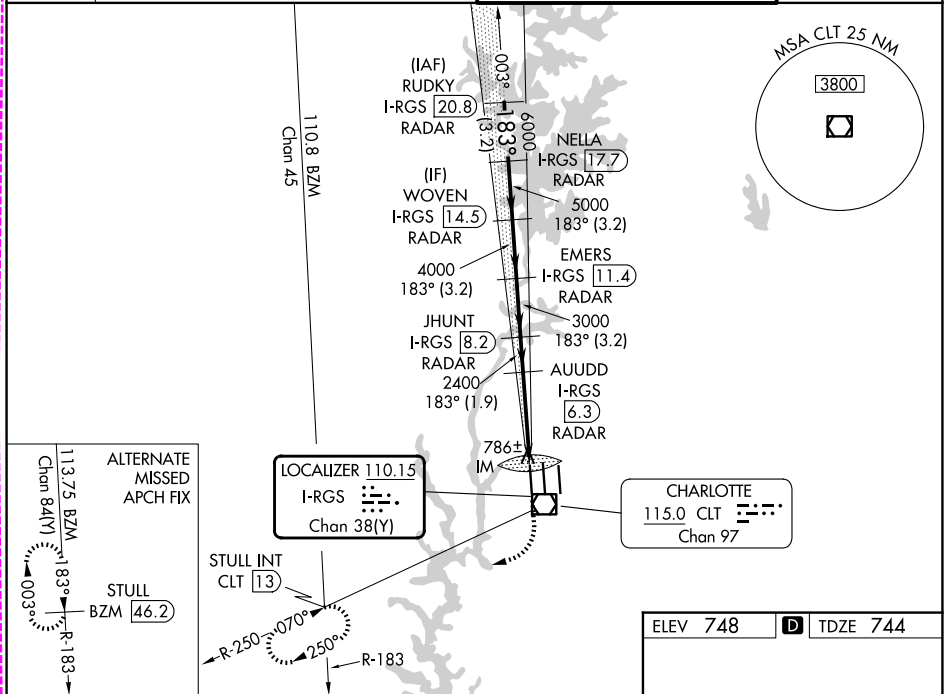
RADAR required for procedure entry. DME or RADAR required.

Simultaneous approach authorized.

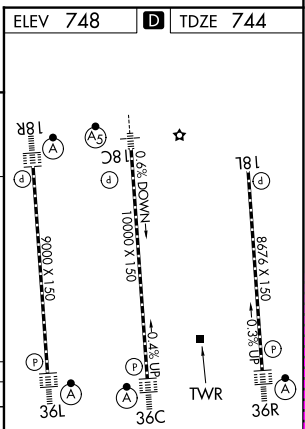


MISSED APPROACH: Climb to 1200 then climbing right turn to 4000 on CLT VOR/DME R-250 to STULL INT/CLT 13 DME and hold, continue climb-in-hold to 4000.

D-ATIS 121.15	CHARLOTTE APP CON		CHARLOTTE TOWER		GND CON
	128.325 (001°-119°)	257.2 (180°-359°)	118.1 257.8 (Rwys 18L-36R)		121.8 348.6 (W)
	120.05 (120°-295°)	307.8 (360°-179°)	126.4 257.8 (Rwy 18C-36C)		121.9 348.6 (E)
	134.75 (296°-360°)		133.35 257.8 (Rwy 18R-36L)		



CATEGORY	A	B	C	D
S-ILS 18R	CAT II RA 106/12 100 DA 844			
S-ILS 18R	CAT III RVR 06			



CATEGORY II & III ILS SPECIAL AIRCREW & AIRCRAFT CERTIFICATION REQUIRED

HIRL all Rwys
REIL Rwys 18L and 23
TDZ/CL Rwys 18R, 36L, 36C and 36R

SE-2, 16 APR 2026 to 14 MAY 2026

SE-2, 16 APR 2026 to 14 MAY 2026

CHARLOTTE, NORTH CAROLINA

AL-78 (FAA)

26134

LOC/DME I-RGS 110.15 Chan 38(Y)	APP CRS 183°	Rwy Ldg TDZE 744 Apt Elev 748	9000
---	------------------------	---	-------------

ILS RWY 19R (CAT II & III)

CHARLOTTE/DOUGLAS INTL (CLT)

DME or RADAR required. RADAR required for procedure entry.

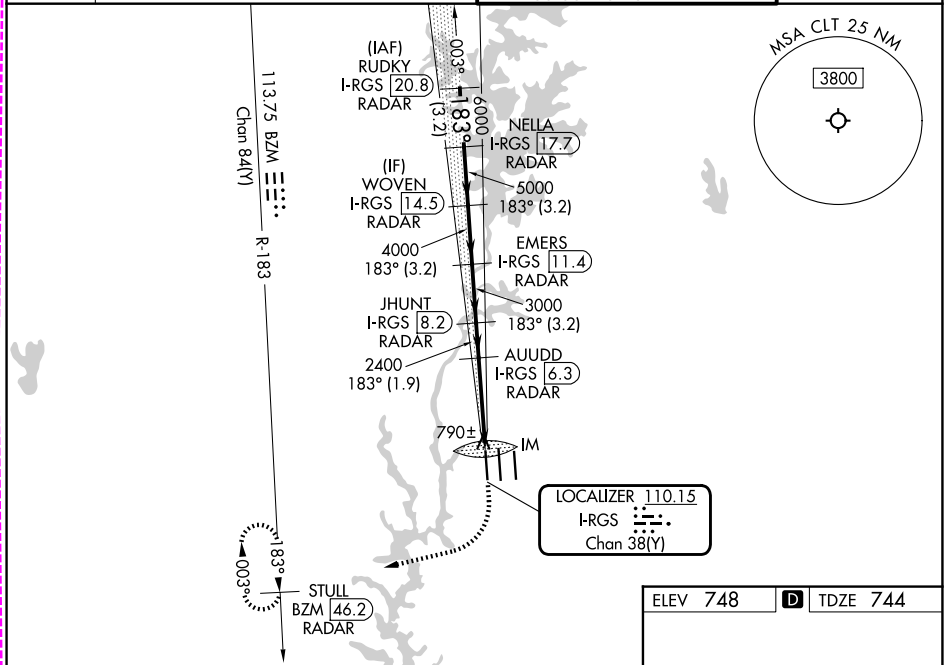
Simultaneous approach authorized.

ALSF-2



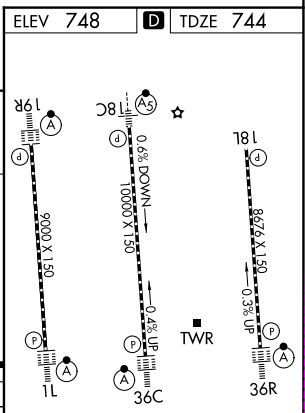
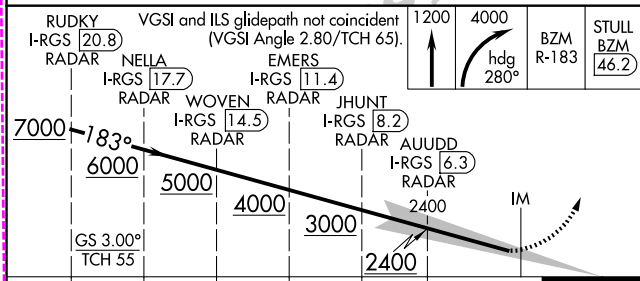
MISSED APPROACH: Climb to 1200 then climbing right turn to 4000 on heading 280° and on BZM VOR/DME R-183 to STULL/BZM 46.2 DME/RADAR and hold, continue climb-in-hold to 4000.

D-ATIS 121.15	CHARLOTTE APP CON		CHARLOTTE TOWER		GND CON
	128.325 (001°-119°)	257.2 (180°-359°)	118.1	257.8 (18L-36R)	121.8 348.6 (W)
	120.05 (120°-295°)	307.8 (360°-179°)	126.4	257.8 (18C-36C)	121.9 348.6 (E)
	134.75 (296°-360°)		133.35	257.8 (1L-19R)	



SE-2, 14 MAY 2026 to 11 JUN 2026

SE-2, 14 MAY 2026 to 11 JUN 2026



CATEGORY	A	B	C	D
S-ILS 19R	CAT II RA 106/12 100 DA 844			
S-ILS 19R	CAT III RVR 06			

CATEGORY II & III ILS SPECIAL AIRCREW & AIRCRAFT CERTIFICATION REQUIRED

HIRL all Rwys
REIL Rwy 18L
TDZL/RCLS Rwys 1L, 19R, 36C and 36R

CHARLOTTE, NORTH CAROLINA

Amdt 3 14MAY26

35°13'N-80°57'W

CHARLOTTE/DOUGLAS INTL (CLT)

ILS RWY 19R (CAT II & III)