

CHARLOTTE, NORTH CAROLINA

AL-78 (FAA)

25275

LOC/DME I-RGS 110.15 Chan 38(Y)	APP CRS 183°	Rwy Ldg TDZE 744 Apt Elev 748	9000
---	------------------------	---	-------------

ILS RWY 18R (SA CAT I)

CHARLOTTE/DOUGLAS INTL (CLT)

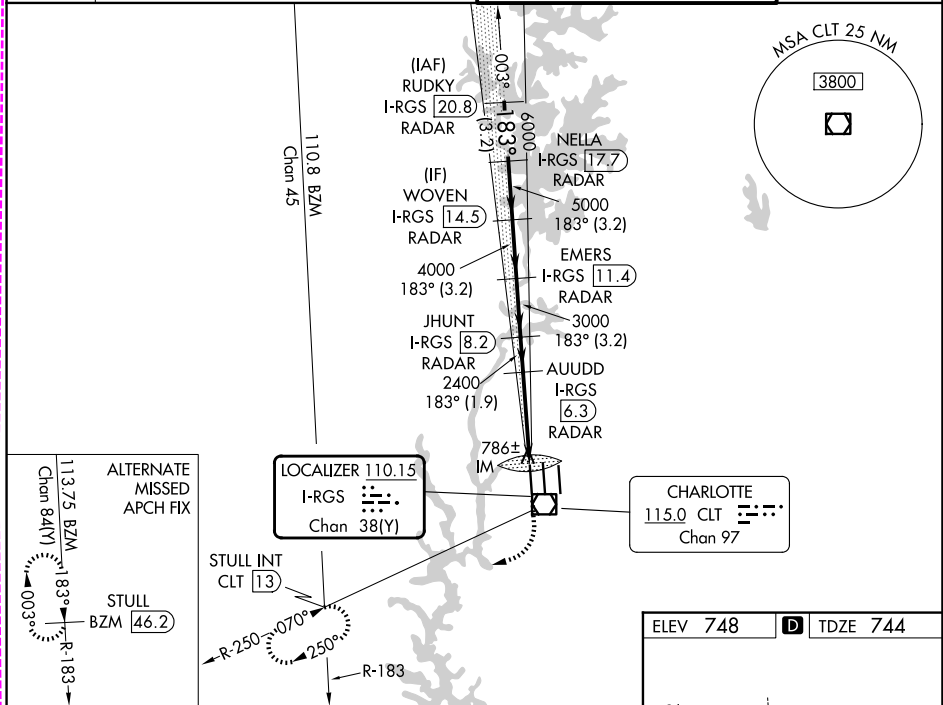
RADAR required for procedure entry. DME or RADAR required.

Simultaneous approach authorized.
Requires specific OPSPEC, MSPEC or LOA approval and use of HUD to DH.

ALSF-2
A

MISSED APPROACH: Climb to 1200 then climbing right turn to 4000 on CLT VOR/DME R-250 to STULL INT/CLT 13 DME and hold, continue climb-in-hold to 4000.

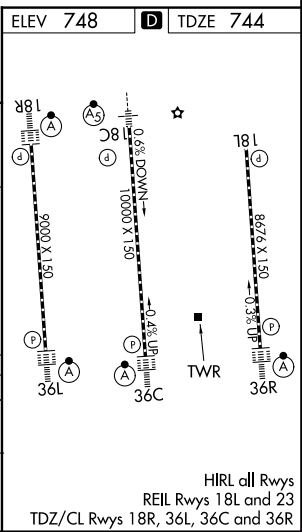
D-ATIS 121.15	CHARLOTTE APP CON 128.325 (001°-119°) 120.05 (120°-295°) 134.75 (296°-360°)	257.2 (180°-359°) 307.8 (360°-179°)	CHARLOTTE TOWER 118.1 257.8 (Rwys 18L-36R) 126.4 257.8 (Rwy 18C-36C) 133.35 257.8 (Rwy 18R-36L)	GND CON 121.8 348.6 (W) 121.9 348.6 (E)
-------------------------	---	--	--	---



SE-2, 16 APR 2026 to 14 MAY 2026

SE-2, 16 APR 2026 to 14 MAY 2026

RUDKY I-RGS (20.8) RADAR		NELLA I-RGS (17.7) RADAR		WOVEN I-RGS (14.5) RADAR		EMERS I-RGS (11.4) RADAR		JHUNT I-RGS (8.2) RADAR		AUDD I-RGS (6.3) RADAR		
VGSI and ILS glidepath not coincident (VGSI Angle 2.80/TCH 65).												
1200 4000 CLT R-250												
7000 183°												
GS 3.00° TCH 55												
IM												
STULL INT												
3.2 NM 3.2 NM 3.2 NM 3.2 NM 1.9 NM 5 NM 1.078'												
CATEGORY	A			B			C			D		
S-ILS 18R	RA 228/14 150 DA 894											



SA CATEGORY I ILS SPECIAL AIRCREW & AIRCRAFT CERTIFICATION REQUIRED

HIRL all Rwys
REIL Rwys 18L and 23
TDZ/CL Rwys 18R, 36L, 36C and 36R

CHARLOTTE, NORTH CAROLINA
Amdt 2A 05DEC19

35°13'N-80°57'W

CHARLOTTE/DOUGLAS INTL (CLT)
ILS RWY 18R (SA CAT I)

CHARLOTTE, NORTH CAROLINA

AL-78 (FAA)

26134

LOC/DME I-RGS 110.15 Chan 38 (Y)	APP CRS 183°	Rwy Ldg TDZE 744 Apt Elev 748
--	------------------------	---

ILS RWY 19R (SA CAT I)

CHARLOTTE/DOUGLAS INTL (CLT)

DME or RADAR required. RADAR required for procedure entry.

Simultaneous approach authorized.
Requires specific OPSPEC, MSPEC, or LOA approval.

ALSF-2

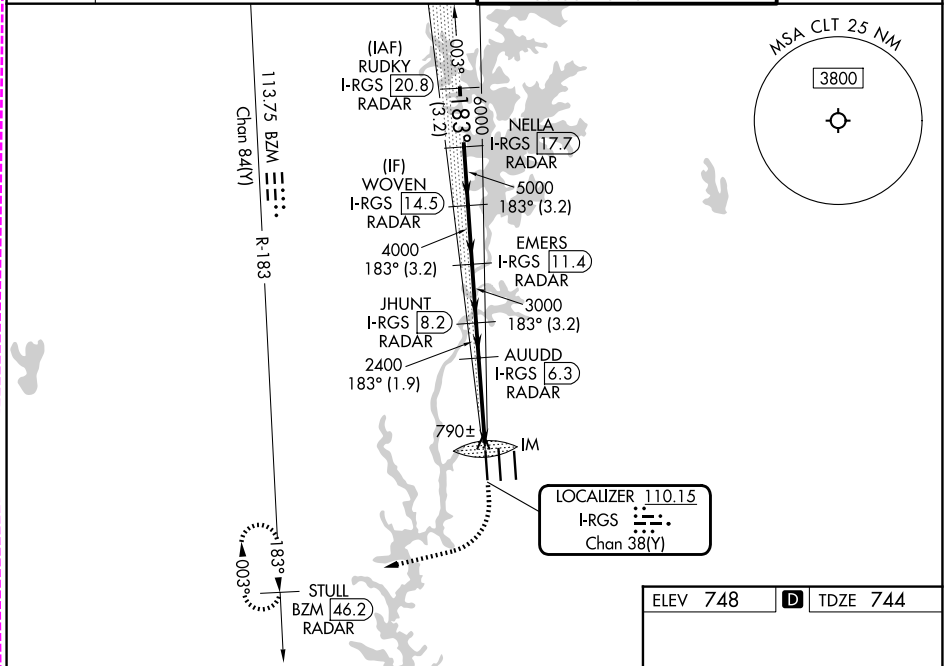


MISSED APPROACH: Climb to 1200 then climbing right turn to 4000 on heading 280° and on BZM VOR/DME R-183 to STULL/BZM 46.2 DME/RADAR and hold, continue climb-in-hold to 4000.

D-ATIS 121.15	CHARLOTTE APP CON	
	128.325 (001°-119°)	257.2 (180°-359°)
	120.05 (120°-295°)	307.8 (360°-179°)
	134.75 (296°-360°)	

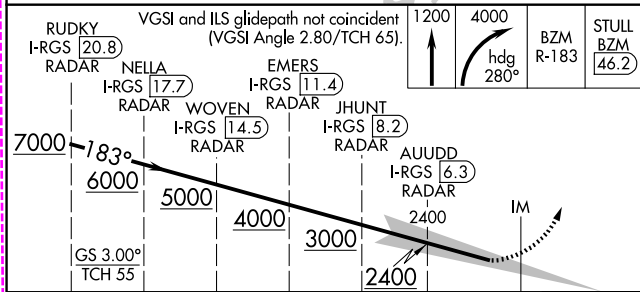
CHARLOTTE TOWER	
118.1	257.8 (18L-36R)
126.4	257.8 (18C-36C)
133.35	257.8 (1L-19R)

GND CON	
121.8	348.6 (W)
121.9	348.6 (E)



SE-2, 14 MAY 2026 to 11 JUN 2026

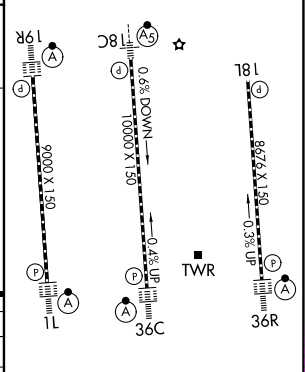
SE-2, 14 MAY 2026 to 11 JUN 2026



ELEV 748	D TDZE 744
----------	-------------------

CATEGORY	A	B	C	D
S-ILS 19R	RA 228/14 150 DA 894			

SA CATEGORY I ILS SPECIAL AIRCREW & AIRCRAFT CERTIFICATION REQUIRED



HIRL all Rwys
REIL Rwy 18L
TDZL/RCLS Rwys 1L, 19R, 36C and 36R

CHARLOTTE, NORTH CAROLINA

Amdt 3 14MAY26

35°13'N-80°57'W

CHARLOTTE/DOUGLAS INTL (CLT)

ILS RWY 19R (SA CAT I)