

CHARLOTTE, NORTH CAROLINA

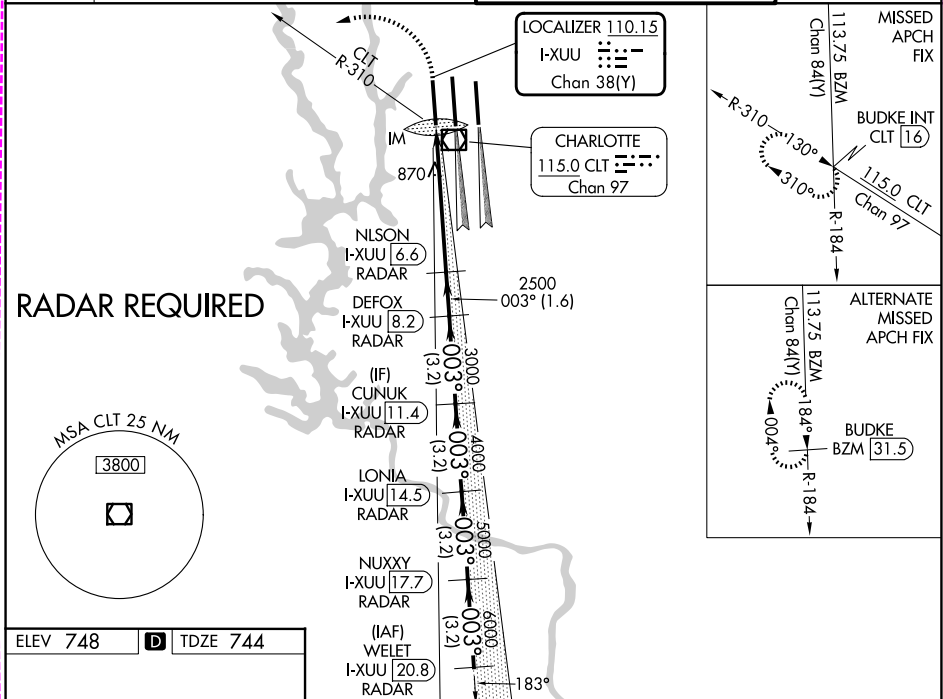
AL-78 (FAA)

25275

LOC/DME I-XUU <b>110.15</b> Chan <b>38(Y)</b>	APP CRS <b>003°</b>	Rwy Ldg TDZE <b>744</b> Apt Elev <b>748</b>
---	------------------------	---

**ILS RWY 36L** (CAT II & III)  
CHARLOTTE/DOUGLAS INTL (CLT)

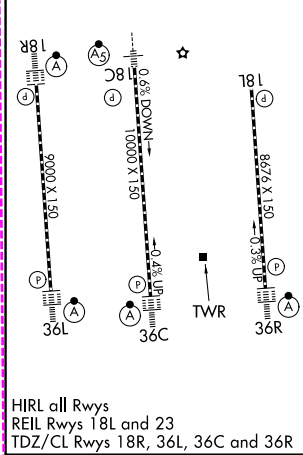
D-ATIS <b>121.15</b>	CHARLOTTE APP CON		CHARLOTTE TOWER		GND CON
	<b>128.325</b> (001°-119°)	<b>257.2</b> (180°-359°)	<b>118.1</b> <b>126.4</b> <b>133.35</b>	<b>257.8</b> (Rwys 18L-36R) <b>257.8</b> (Rwy 18C-36C) <b>257.8</b> (Rwy 18R-36L)	<b>121.8 348.6 (W)</b> <b>121.9 348.6 (E)</b>



SE-2, 16 APR 2026 to 14 MAY 2026

SE-2, 16 APR 2026 to 14 MAY 2026

ELEV 748	<b>D</b>	TDZE 744
----------	----------	----------



CHARLOTTE, NORTH CAROLINA

Amdt 1B 10SEP20

35°13'N-80°57'W

CHARLOTTE/DOUGLAS INTL (CLT)

**ILS RWY 36L** (CAT II & III)

**CATEGORY II & III ILS SPECIAL AIRCREW & AIRCRAFT CERTIFICATION REQUIRED**

CHARLOTTE, NORTH CAROLINA

AL-78 (FAA)

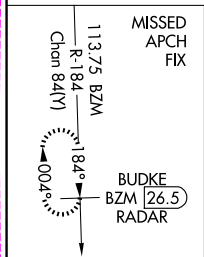
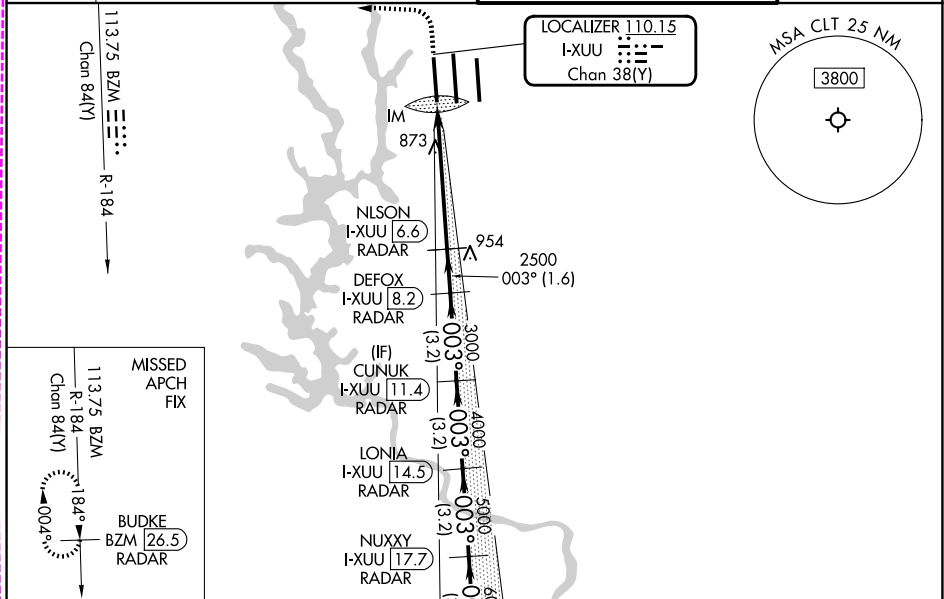
26134

LOC/DME I-XUU <b>110.15</b> Chan <b>38(Y)</b>	APP CRS <b>003°</b>	Rwy Ldg TDZE <b>744</b> Apt Elev <b>748</b>	<b>9000</b> <b>744</b> <b>748</b>
---	------------------------	---	---

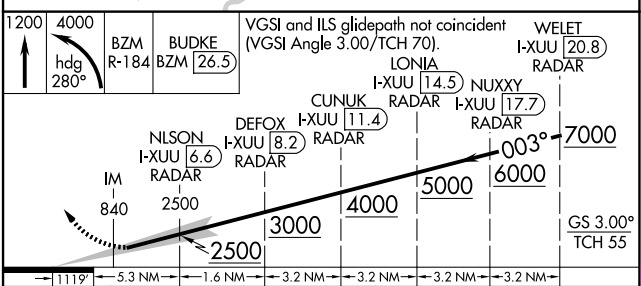
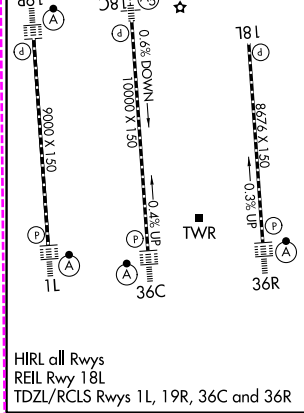
**ILS RWY 1L** (CAT II & III)  
CHARLOTTE/DOUGLAS INTL (CLT)

DME or RADAR required. RADAR required for procedure entry.		ALSF-2	MISSED APPROACH: Climb to 1200 then climbing left turn to 4000 on heading 280° and on BZM VOR/DME R-184 to BUDKE/BZM 26.5 DME/RADAR and hold.
Simultaneous approach authorized.			

D-ATIS <b>121.15</b>	CHARLOTTE APP CON <b>128.325</b> (001°-119°) <b>120.05</b> (120°-295°) <b>134.75</b> (296°-360°)	<b>257.2</b> (180°-359°) <b>307.8</b> (360°-179°)	CHARLOTTE TOWER <b>118.1</b> <b>257.8</b> (18L-36R) <b>126.4</b> <b>257.8</b> (18C-36C) <b>133.35</b> <b>257.8</b> (1L-19R)	GND CON <b>121.8</b> <b>348.6</b> (W) <b>121.9</b> <b>348.6</b> (E)
-------------------------	---	--	--	---



ELEV 748	<b>D</b>	TDZE 744
----------	----------	----------



CATEGORY	A	B	C	D
S-ILS 1L	CAT II RA 106/12 100 DA 844			
S-ILS 1L	CAT III RVR 06			

**CATEGORY II & III ILS SPECIAL AIRCREW & AIRCRAFT CERTIFICATION REQUIRED**

CHARLOTTE, NORTH CAROLINA

Amdt 2 14MAY26

35°13'N-80°57'W

CHARLOTTE/DOUGLAS INTL (CLT)

**ILS RWY 1L** (CAT II & III)

SE-2, 14 MAY 2026 to 11 JUN 2026

SE-2, 14 MAY 2026 to 11 JUN 2026