

CHARLOTTE, NORTH CAROLINA

AL-78 (FAA)


25275


LOC I-DQG	APP CRS	Rwy Ldg	10000
111.7	003°	TDZE	707
		Apt Elev	748

ILS RWY 36C (CAT II & III)

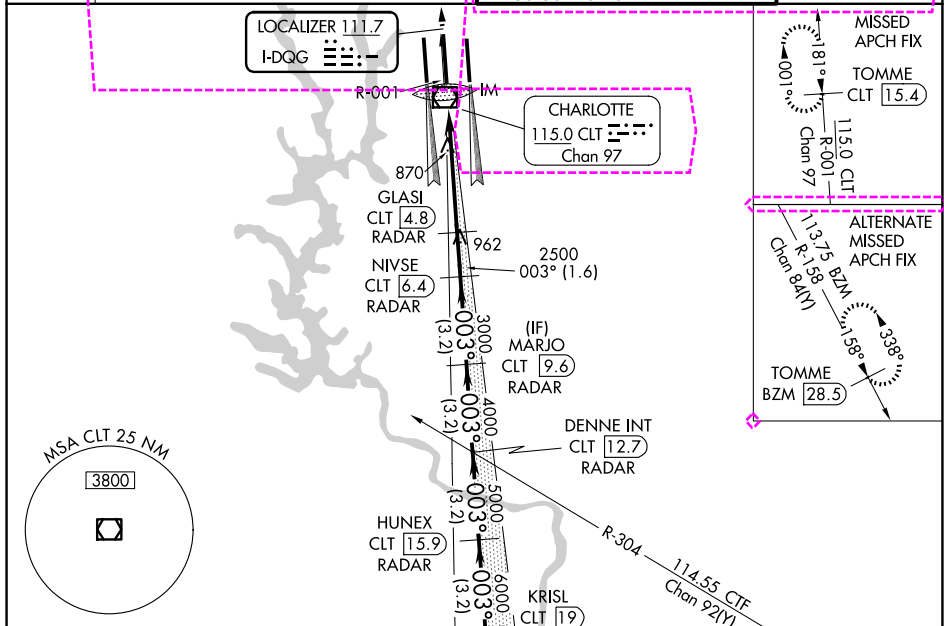
CHARLOTTE/DOUGLAS INTL (CLT)

RADAR required for procedure entry. DME or RADAR required.

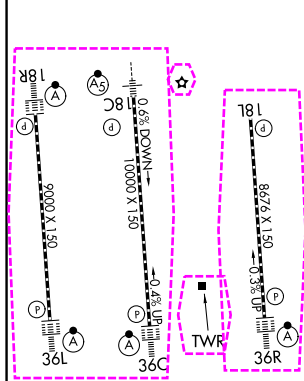
ALSF-2  MISSED APPROACH: Climb to 3000 on CLT VOR/DME R-001 to TOMME/CLT 15.4 DME and hold.

 Simultaneous approach authorized. DQG ILS UZ Rwy 36C unusable for rollout guidance.

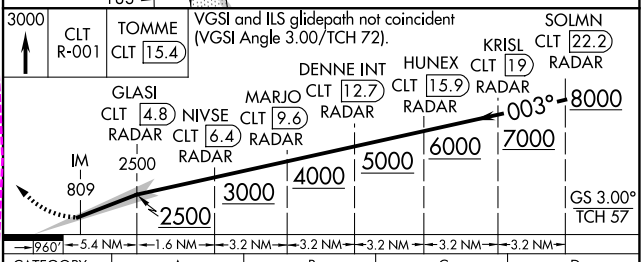
D-ATIS	CHARLOTTE APP CON	CHARLOTTE TOWER	GND CON
121.15	128.325 (001°-119°) 257.2 (180°-359°)	118.1 257.8 (Rwys 18L-36R)	121.8 348.6 (W)
	120.05 (120°-295°) 307.8 (360°-179°)	126.4 257.8 (Rwy 18C-36C)	121.9 348.6 (E)
	134.75 (296°-360°)	133.35 257.8 (Rwy 18R-36L)	



ELEV 748	D	TDZE 707
----------	----------	----------



HIRL all Rwys
REIL Rwys 18L and 23
TDZ/CL Rwys 18R, 36L, 36C and 36R



CATEGORY	A	B	C	D
S-ILS 36C	CAT II	RA 126/12	100	DA 807
S-ILS 36C		CAT IIIa	RVR 07	
S-ILS 36C		CAT IIIb	RVR 07	
S-ILS 36C		CAT IIIc	NA	

CATEGORY II & III ILS - SPECIAL AIRCREW & AIRCRAFT CERTIFICATION REQUIRED

CHARLOTTE, NORTH CAROLINA

Amdt 17 12SEP19

CHARLOTTE/DOUGLAS INTL (CLT)

35°13'N-80°57'W

ILS RWY 36C (CAT II & III)

SE-2, 16 APR 2026 to 14 MAY 2026

SE-2, 16 APR 2026 to 14 MAY 2026

CHARLOTTE, NORTH CAROLINA

AL-78 (FAA)


26134


LOC I-DQG	APP CRS	Rwy Ldg	10000
111.7	003°	TDZE	707
		Apt Elev	748

ILS RWY 36C (CAT II & III)

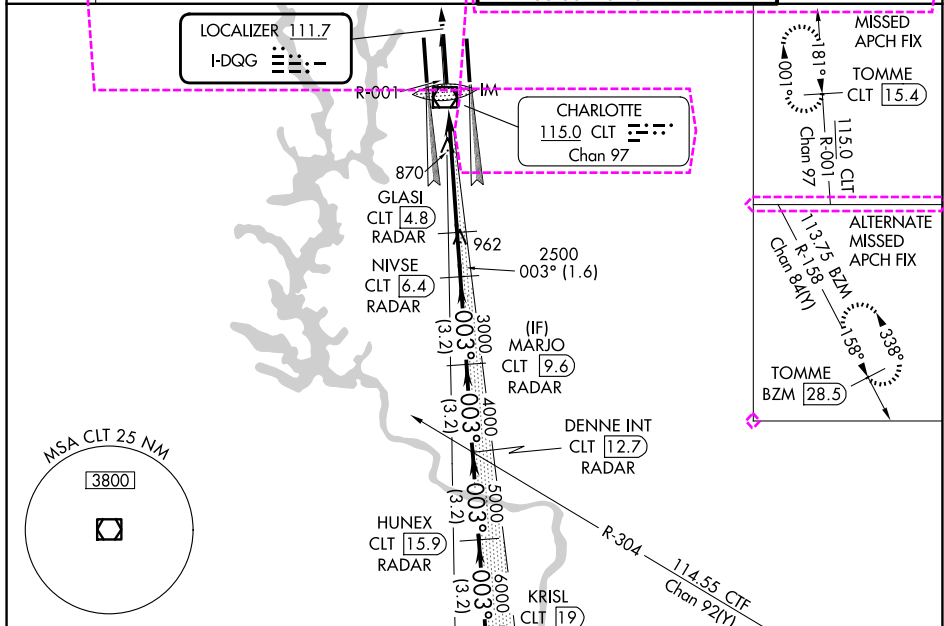
CHARLOTTE/DOUGLAS INTL (CLT)

RADAR required for procedure entry. DME or RADAR required.

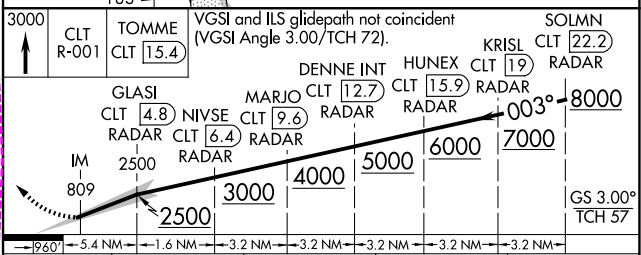
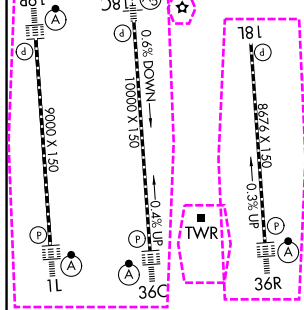
ALSF-2  MISSED APPROACH: Climb to 3000 on CLT VOR/DME R-001 to TOMME/CLT 15.4 DME and hold.

 Simultaneous approach authorized. DQG ILS UZ Rwy 36C unusable for rollout guidance.

D-ATIS 121.15	CHARLOTTE APP CON		CHARLOTTE TOWER		GND CON
	128.325	257.2 (180°-359°)	118.1	257.8 (18L-36R)	121.8 348.6 (W)
	120.05	307.8 (360°-179°)	126.4	257.8 (18C-36C)	121.9 348.6 (E)
	134.75	307.8 (296°-360°)	133.35	257.8 (1L-19R)	



ELEV 748	D	TDZE 707
----------	----------	----------



CATEGORY	A	B	C	D
S-ILS 36C	CAT II RA 126/12 100 DA 807			
S-ILS 36C	CAT IIIa RVR 07			
S-ILS 36C	CAT IIIb RVR 07			
S-ILS 36C	CAT IIIc NA			

CATEGORY II & III ILS - SPECIAL AIRCREW & AIRCRAFT CERTIFICATION REQUIRED

HIRL all Rwys
REIL Rwy 18L
TDZL/RCLS Rwys 1L, 19R, 36C and 36R

CHARLOTTE, NORTH CAROLINA
Amdt 17 12SEP19

CHARLOTTE/DOUGLAS INTL (CLT)
35°13'N-80°57'W
ILS RWY 36C (CAT II & III)

SE-2, 14 MAY 2026 to 11 JUN 2026

SE-2, 14 MAY 2026 to 11 JUN 2026