

CHARLOTTE, NORTH CAROLINA

AL-78 (FAA)

25275

| | | |
|--|------------------------|--|
| LOC/DME I-BQC 108.9 Chan 26 | APP CRS 003° | Rwy Ldg TDZE Apt Elev 8390 727 748 |
|--|------------------------|--|

ILS RWY 36R (CAT II & III)

CHARLOTTE/DOUGLAS INTL (CLT)

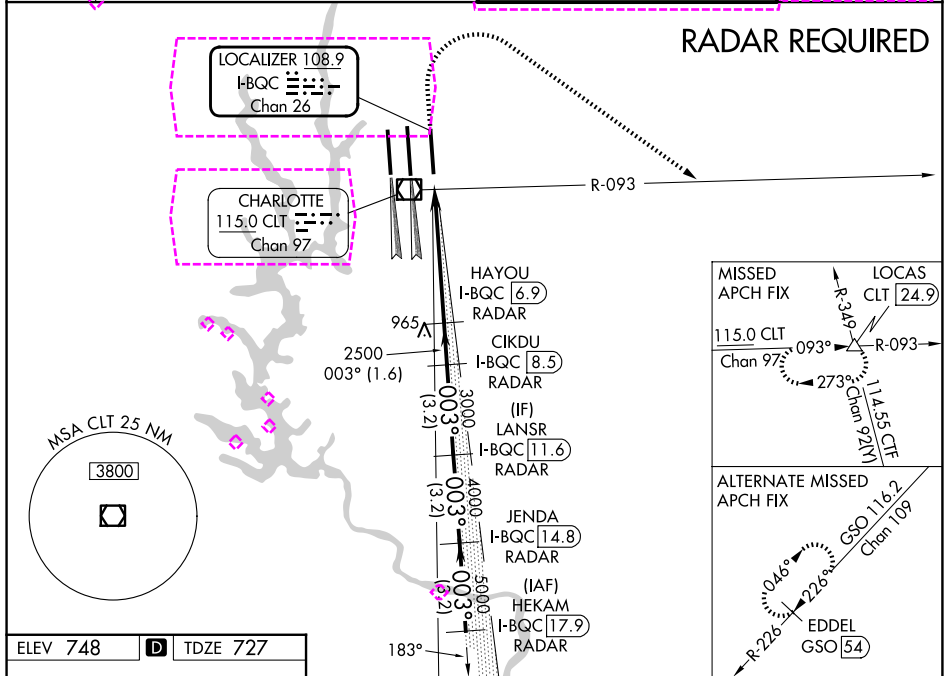
Simultaneous approach authorized.
DME or RADAR required.

ALSF-2

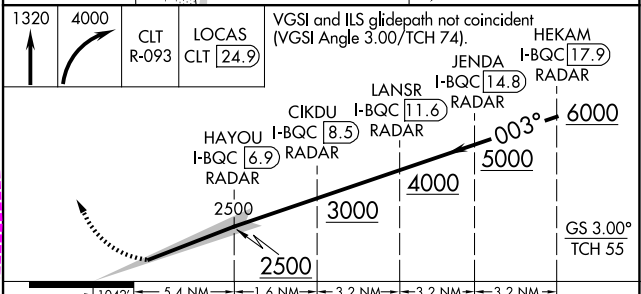
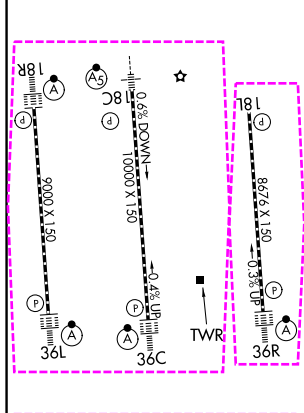
MISSED APPROACH: Climb to 1320 then climbing right turn to 4000 on CLT VOR/DME R-093 to LOCAS INT/24.9 DME and hold.

| D-ATIS | CHARLOTTE APP CON | CHARLOTTE TOWER | GND CON |
|---------------|--|---|--|
| 121.15 | 128.325 (001°-119°) 120.05 (120°-295°) 134.75 (296°-360°) | 118.1 257.8 (Rwys 18L-36R) 126.4 257.8 (Rwy 18C-36C) 133.35 257.8 (Rwy 18R-36L) | 121.8 348.6 (W) 121.9 348.6 (E) |

RADAR REQUIRED



| | | |
|----------|----------|----------|
| ELEV 748 | D | TDZE 727 |
|----------|----------|----------|



| CATEGORY | A | B | C | D |
|-----------|-----------------------------|---|---|---|
| S-ILS 36R | CAT II RA 119/12 100 DA 827 | | | |
| S-ILS 36R | CAT IIIa RVR 06 | | | |
| S-ILS 36R | CAT IIIb NA | | | |
| S-ILS 36R | CAT IIIc NA | | | |

CATEGORY II & III ILS SPECIAL AIRCREW & AIRCRAFT CERTIFICATION REQUIRED

CHARLOTTE, NORTH CAROLINA
Amdt 12A 24MAY18

35°13'N-80°57'W

CHARLOTTE/DOUGLAS INTL (CLT) ILS RWY 36R (CAT II & III)

SE-2, 16 APR 2026 to 14 MAY 2026

SE-2, 16 APR 2026 to 14 MAY 2026

CHARLOTTE, NORTH CAROLINA

AL-78 (FAA)

26134

| | | |
|--|------------------------|--|
| LOC/DME I-BQC 108.9 Chan 26 | APP CRS 003° | Rwy Ldg TDZE Apt Elev 8390 727 748 |
|--|------------------------|--|

ILS RWY 36R (CAT II & III)

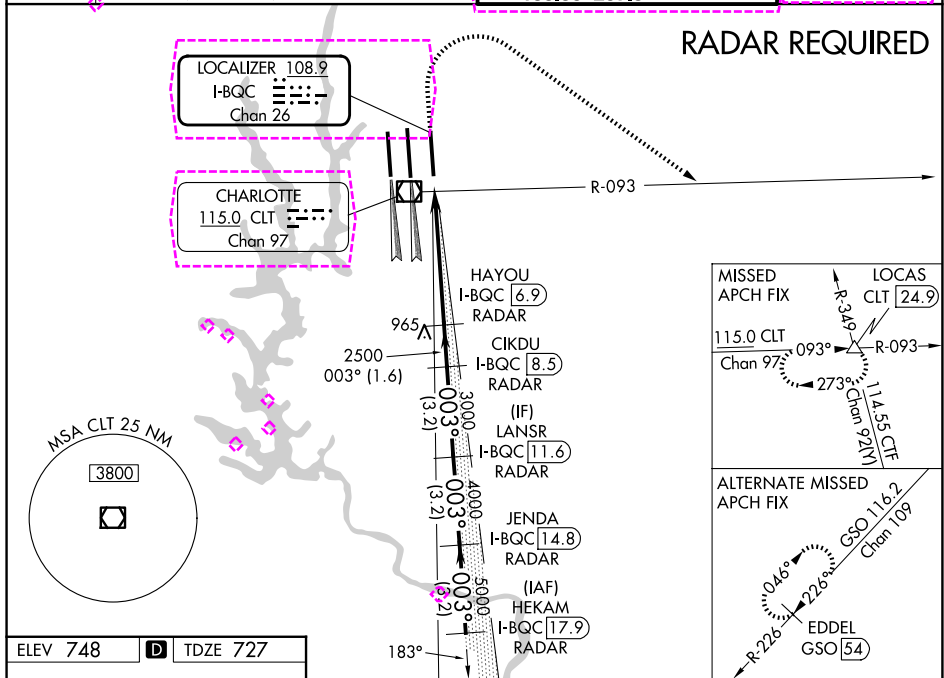
CHARLOTTE/DOUGLAS INTL (CLT)

Simultaneous approach authorized.
DME or RADAR required.

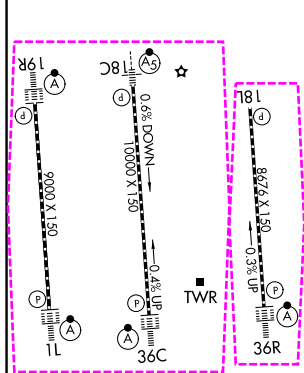
ALSF-2

MISSED APPROACH: Climb to 1320 then climbing right turn to 4000 on CLT VOR/DME R-093 to LOCAS INT/24.9 DME and hold.

| | | | | | |
|-------------------------|--|--|--|--|--|
| CHARLOTTE APP CON | | CHARLOTTE TOWER | | GND CON | |
| D-ATIS 121.15 | 128.325 (001°-119°) 120.05 (120°-295°) 134.75 (296°-360°) | 257.2 (180°-359°) 307.8 (360°-179°) | 118.1 257.8 (18L-36R) 126.4 257.8 (18C-36C) 133.35 257.8 (1L-19R) | 121.8 348.6 (W) 121.9 348.6 (E) | |



| | | |
|----------|----------|----------|
| ELEV 748 | D | TDZE 727 |
|----------|----------|----------|



| | | | | |
|-----------|-----------------------------|---|---|---|
| CATEGORY | A | B | C | D |
| S-ILS 36R | CAT II RA 119/12 100 DA 827 | | | |
| S-ILS 36R | CAT IIIa RVR 06 | | | |
| S-ILS 36R | CAT IIIb NA | | | |
| S-ILS 36R | CAT IIIc NA | | | |

CATEGORY II & III ILS SPECIAL AIRCREW & AIRCRAFT CERTIFICATION REQUIRED

CHARLOTTE, NORTH CAROLINA
Amdt 12A 24MAY18

35°13'N-80°57'W

CHARLOTTE/DOUGLAS INTL (CLT)
ILS RWY 36R (CAT II & III)

SE-2, 14 MAY 2026 to 11 JUN 2026

SE-2, 14 MAY 2026 to 11 JUN 2026