



CHARLOTTE, NORTH CAROLINA

AL-78 (FAA)

26134

LOC/DME I-BQC <b>108.9</b> Chan 26	APP CRS <b>003°</b>	Rwy Ldg TDZE <b>727</b> Apt Elev <b>748</b>
--	------------------------	---

# ILS RWY 36R (SA CAT I)

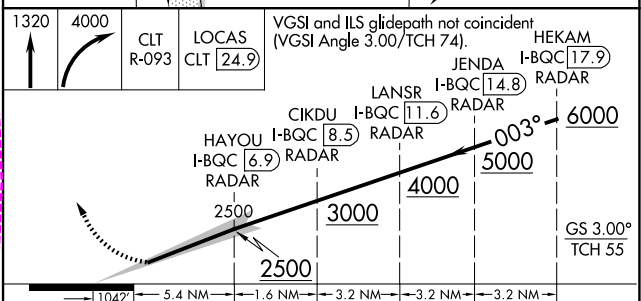
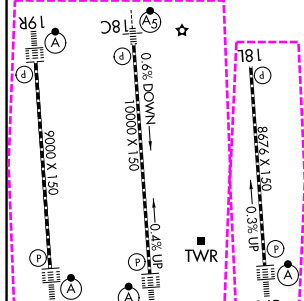
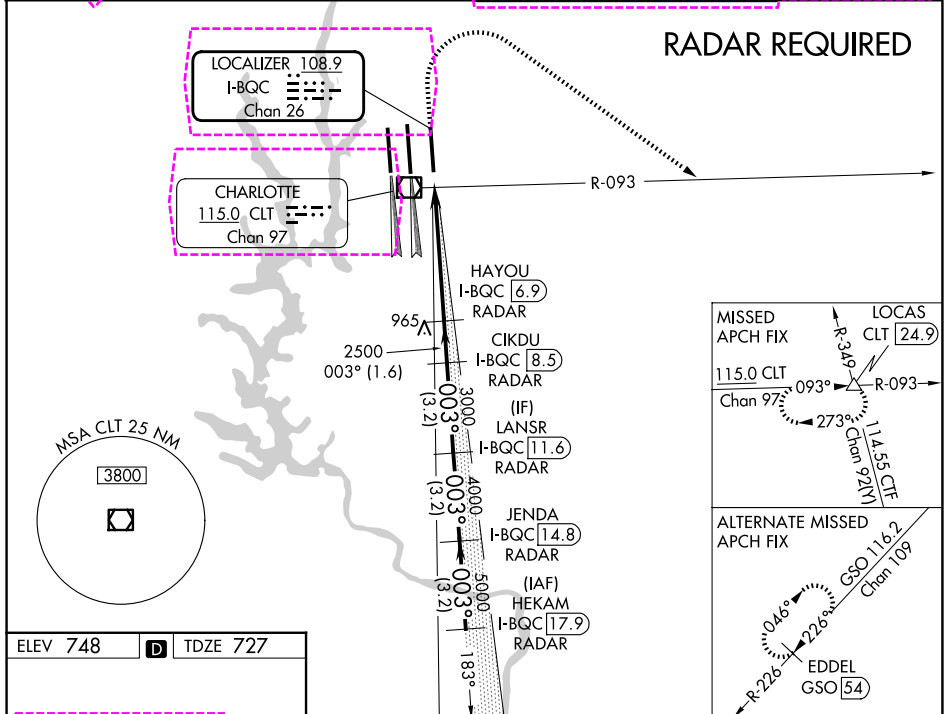
CHARLOTTE/DOUGLAS INTL (CLT)

Simultaneous approach authorized. DME or RADAR required. Requires specific OPSPEC, MSPEC or LOA approval and use of HUD to DH.

ALSf-2

MISSED APPROACH: Climb to 1320 then climbing right turn to 4000 on CLT VOR/DME R-093 to LOCAS INT/24.9 DME and hold.

CHARLOTTE APP CON		CHARLOTTE TOWER		GND CON	
D-ATIS <b>121.15</b>	<b>128.325</b> (001°-119°) <b>120.05</b> (120°-295°) <b>134.75</b> (296°-360°)	<b>257.2</b> (180°-359°) <b>307.8</b> (360°-179°)	<b>118.1</b> 257.8 (18L-36R) <b>126.4</b> 257.8 (18C-36C) <b>133.35</b> 257.8 (1L-19R)	<b>121.8</b> 348.6 (W) <b>121.9</b> 348.6 (E)	



CATEGORY	A	B	C	D
S-ILS 36R	RA 173/14 150 DA 877			

## SA CATEGORY I ILS SPECIAL AIRCREW & AIRCRAFT CERTIFICATION REQUIRED

CHARLOTTE, NORTH CAROLINA  
Amdt 12A 24MAY18

35°13'N-80°57'W

CHARLOTTE/DOUGLAS INTL (CLT)  
ILS RWY 36R (SA CAT I)

SE-2, 14 MAY 2026 to 11 JUN 2026

SE-2, 14 MAY 2026 to 11 JUN 2026