

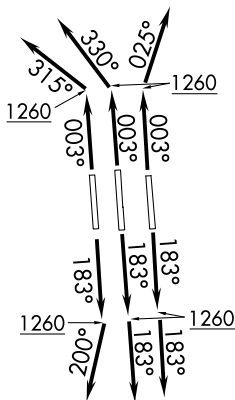
# ICONS SIX DEPARTURE (RNAV)

CHARLOTTE DEP CON  
 120.5 257.2 (1L, 36C)  
 124.0 307.8 (18L/C, 19R, 36R)  
 D-ATIS DEP  
 132.1  
 CLNC DEL  
 127.15 348.6  
 CPDLC  
 GND CON  
 121.8 348.6 (W)  
 121.9 348.6 (E)  
 CHARLOTTE TOWER  
 118.1 257.8 (18L-36R)  
 126.4 257.8 (18C-36C)  
 133.35 257.8 (1L-19R)

RNAV 1 - DME/DME/IRU or GPS.

RADAR required.

**TOP ALTITUDE:  
8000**



### TAKEOFF MINIMUMS

Rwys 18L/C, 19R, 36C/R: Standard with minimum climb of 500'/NM to 1260.

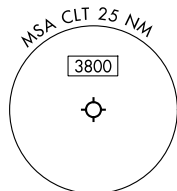
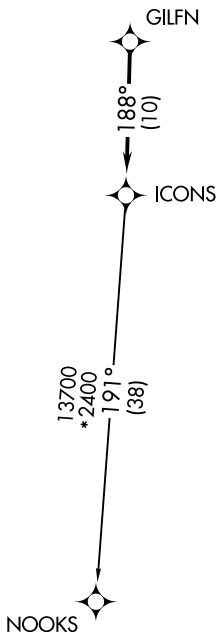
Rwy 1L: Standard with minimum climb of 500'/NM to 1400.

NOTE: Turbojet only.

NOTE: If unable to accept climb rates, advise ATC on initial contact.

NOTE: Transponder code will be issued via PDC or CLT CLNC DEL.

NOTE: Accelerate to 250K, if unable advise ATC. Upon reaching 10000 MSL, accelerate to and maintain 280K, if unable advise ATC.



NOTE: Chart not to scale.

(CONTINUED ON FOLLOWING PAGE)

# ICONS SIX DEPARTURE (RNAV)

(ICONS6.ICONS) 14MAY26

CHARLOTTE, NORTH CAROLINA  
CHARLOTTE/DOUGLAS INTL (CLT)

SE-2, 14 MAY 2026 to 11 JUN 2026

SE-2, 14 MAY 2026 to 11 JUN 2026

# ICONS SIX DEPARTURE (RNAV)



## DEPARTURE ROUTE DESCRIPTION SEE ADDITIONAL REQUIREMENTS ON AAUP

TAKEOFF RUNWAY 1L: Climb on heading 003° to 1260, then on heading 315° or as assigned by ATC for RADAR vectors to GILFN, thence. . .

TAKEOFF RUNWAYS 18L/C: Climb on heading 183° to 1260, then on heading 183° or as assigned by ATC for RADAR vectors to GILFN, thence. . .

TAKEOFF RUNWAY 19R: Climb on heading 183° to 1260, then on heading 200° or as assigned by ATC for RADAR vectors to GILFN, thence. . .

TAKEOFF RUNWAY 36C: Climb on heading 003° to 1260, then on heading 330° or as assigned by ATC for RADAR vectors to GILFN, thence. . .

TAKEOFF RUNWAY 36R: Climb on heading 003° to 1260, then on heading 025° or as assigned by ATC for RADAR vectors to GILFN, thence. . .

. . .on track 188° to ICONS, then on NOOKS Transition. Maintain 8000. Expect filed altitude 10 minutes after departure.

### NOOKS TRANSITION (ICONS6.NOOKS)

SE-2, 14 MAY 2026 to 11 JUN 2026

SE-2, 14 MAY 2026 to 11 JUN 2026