

CHARLOTTE, NORTH CAROLINA

AL-78 (FAA)

25275

LOC/DME I-PEP <b>111.3</b> Chan 50	APP CRS <b>183°</b>	Rwy Ldg <b>10000</b>
		TDZE <b>742</b>
		Apt Elev <b>748</b>

# ILS or LOC RWY 18C

CHARLOTTE/DOUGLAS INTL (CLT)

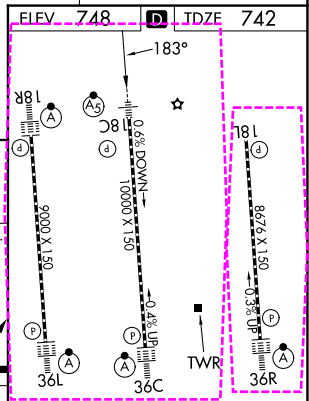
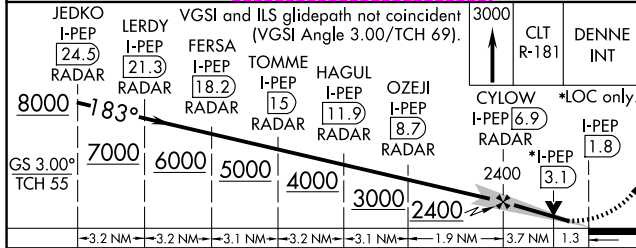
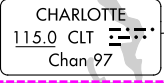
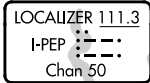
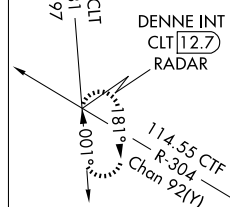
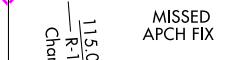
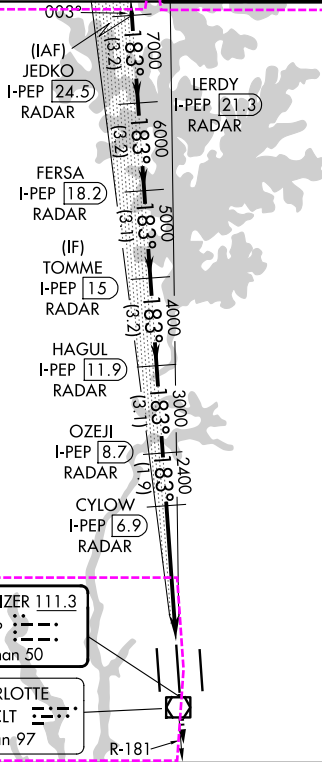
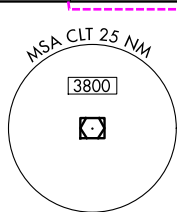
RADAR required for procedure entry. DME or RADAR required

⚠ Circling NA at night. Simultaneous approach authorized. For inop ALS, increase S-LOC 18C Cat C/D visibility to 1/8 SM.  
 ⚠ \*\* RVR 1800 authorized with the use of ED or AP or HUD to DA



MISSED APPROACH: Climb to 3000 on CLT VOR/DME R-181 to DENNE INT/CLT 12.7 DME/RADAR and hold.

D-ATIS <b>121.15</b>	CHARLOTTE APP CON <b>128.325</b> (001°-119°) <b>120.05</b> (120°-295°) <b>134.75</b> (296°-360°)	<b>257.2</b> (180°-359°) <b>307.8</b> (360°-179°)	CHARLOTTE TOWER <b>118.1</b> <b>257.8</b> (Rwys 18L-36R) <b>126.4</b> <b>257.8</b> (Rwy 18C-36C) <b>133.35</b> <b>257.8</b> (Rwy 18R-36L)	GND CON <b>121.8</b> <b>348.6</b> (W) <b>121.9</b> <b>348.6</b> (E)
-------------------------	---	--	--	---



CATEGORY	A	B	C	D
S-ILS 18C **	942/24 200 (200-1/2)			
S-LOC 18C	1220/24 478 (500-1/2)	1220/50 478 (500-1)		
CIRCLING	1380-1 632 (700-1)	1500-2 1/4 752 (800-2 1/4)	1500-2 1/2 752 (800-2 1/2)	

FAF to MAP 5 NM					
Knots	60	90	120	150	180
Min:Sec	5:00	3:20	2:30	2:00	1:40

CHARLOTTE, NORTH CAROLINA

Amdt 11 15AUG19

35°13'N-80°57'W

CHARLOTTE/DOUGLAS INTL (CLT)

# ILS or LOC RWY 18C

SE-2, 16 APR 2026 to 14 MAY 2026

SE-2, 16 APR 2026 to 14 MAY 2026

CHARLOTTE, NORTH CAROLINA

AL-78 (FAA)

26134

LOC/DME I-PEP <b>111.3</b> Chan 50	APP CRS <b>183°</b>	Rwy Ldg <b>10000</b>
		TDZE <b>742</b>
		Apt Elev <b>748</b>

# ILS or LOC RWY 18C

CHARLOTTE/DOUGLAS INTL (CLT)

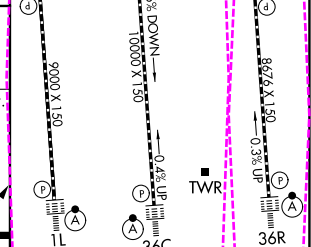
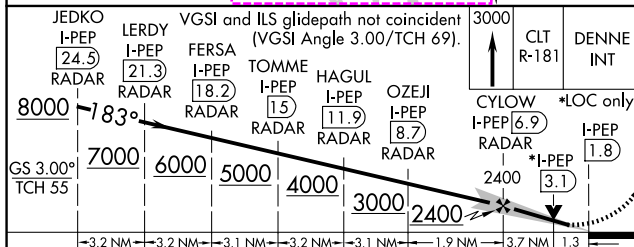
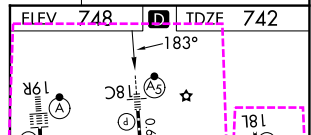
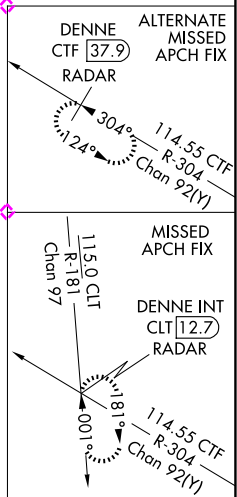
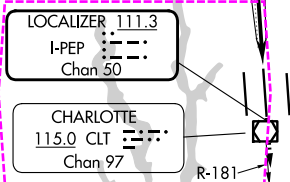
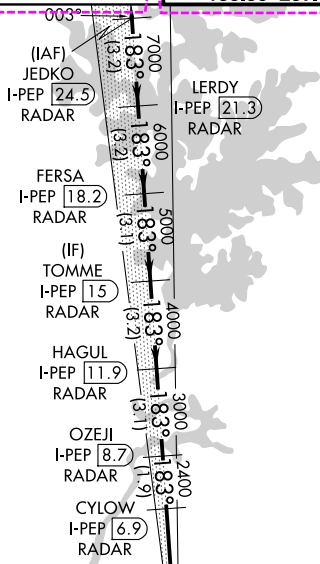
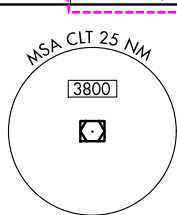
RADAR required for procedure entry - DME or RADAR required

⚠ Circling NA at night. Simultaneous approach authorized. For inop ALS, increase S-LOC 18C Cat C/D visibility to 1/8 SM.  
 \*\* RVR 1800 authorized with the use of ED or AP or HUD to DA



MISSED APPROACH: Climb to 3000 on CLT VOR/DME R-181 to DENNE INT/CLT 12.7 DME/RADAR and hold.

D-ATIS <b>121.15</b>	CHARLOTTE APP CON		CHARLOTTE TOWER		GND CON
<b>120.05</b>	128.325 (001°-119°)	257.2 (180°-359°)	118.1	257.8 (18L-36R)	121.8 348.6 (W)
<b>134.75</b>	120.05 (120°-295°)	307.8 (360°-179°)	126.4	257.8 (18C-36C)	121.9 348.6 (E)
	134.75 (296°-360°)		133.35	257.8 (1L-19R)	



CATEGORY	A	B	C	D
S-ILS 18C **	942/24 200 (200-1/2)			
S-LOC 18C	1220/24 478 (500-1/2)	1220/50 478 (500-1)		
CIRCLING	1380-1 632 (700-1)	1500-2 1/4 752 (800-2 1/4)	1500-2 1/2 752 (800-2 1/2)	

FAF to MAP 5 NM					
Knots	60	90	120	150	180
Min:Sec	5:00	3:20	2:30	2:00	1:40

CHARLOTTE, NORTH CAROLINA  
Amdt 11 15AUG19

35°13'N-80°57'W

# CHARLOTTE/DOUGLAS INTL (CLT) ILS or LOC RWY 18C

SE-2, 14 MAY 2026 to 11 JUN 2026

SE-2, 14 MAY 2026 to 11 JUN 2026