

LOC/DME I-RGS 110.15 Chan 38(Y)	APP CRS 183°	Rwy Ldg TDZE 744 Apt Elev 748
---	------------------------	---

ILS or LOC RWY 18R

CHARLOTTE/DOUGLAS INTL (CLT)

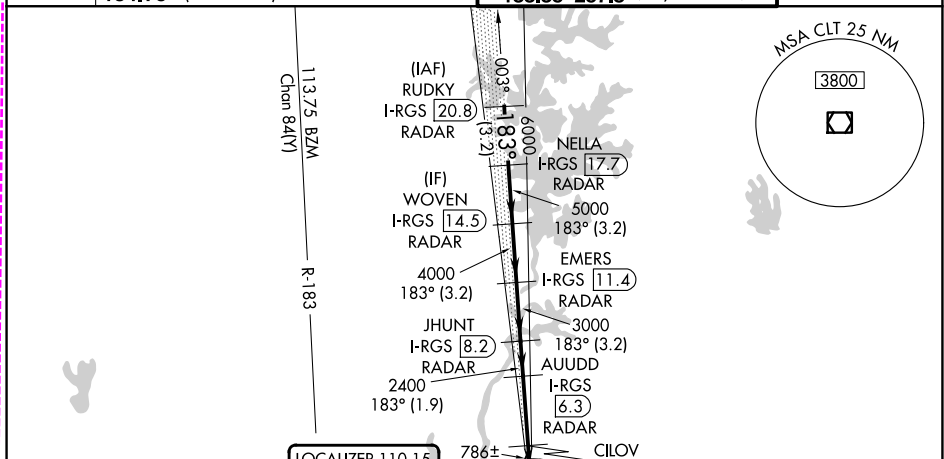
RADAR required for procedure entry. DME or RADAR required.



MISSED APPROACH: Climb to 1200 then climbing right turn to 4000 on CLT VOR/DME R-250 to STULL INT/CLT 13 DME and hold, continue climb-in-hold to 4000.

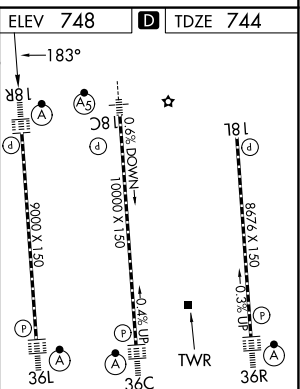
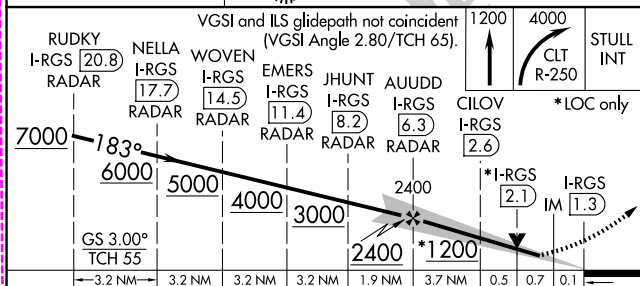
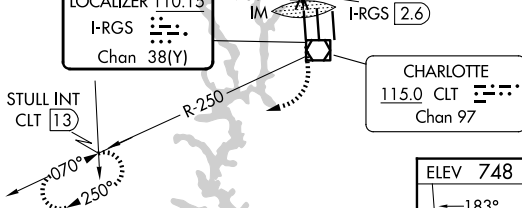
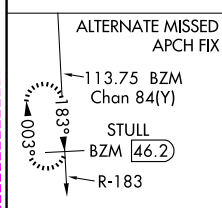
Simultaneous approach authorized. CILOV minimums: For inop ALS, increase S-LOC 18R all Cats visibility to RVR 4500.

D-ATIS 121.15	CHARLOTTE APP CON		CHARLOTTE TOWER		GND CON
	128.325 (001°-119°)	257.2 (180°-359°)	118.1 257.8 (Rwys 18L-36R)		121.8 348.6 (W)
	120.05 (120°-295°)	307.8 (360°-179°)	126.4 257.8 (Rwy 18C-36C)		121.9 348.6 (E)
	134.75 (296°-360°)		133.35 257.8 (Rwy 18R-36L)		



SE-2, 16 APR 2026 to 14 MAY 2026

SE-2, 16 APR 2026 to 14 MAY 2026



CATEGORY	A	B	C	D
S-ILS 18R	944/18 200 (200-½)			
S-LOC 18R	1200/24 456 (500-½)		1200/45 456 (500-¾)	
CILOV FIX MINIMUMS (DME REQUIRED)				
S-LOC 18R	1040/24 296 (300-½)			

ELEV 748	TDZE 744
HIRL all Rwys REIL Rwys 18L and 23 TDZ/CL Rwys 18R, 36L, 36C and 36R	
FAF to MAP 5 NM	
Knots	60 90 120 150 180
Min:Sec	5:00 3:20 2:30 2:00 1:40

CHARLOTTE, NORTH CAROLINA

AL-78 (FAA)

26134

LOC/DME I-RGS	APP CRS	Rwy Ldg	9000
110.15	183°	TDZE	744
Chan 38(Y)		Apt Elev	748

ILS or LOC RWY 19R

CHARLOTTE/DOUGLAS INTL (CLT)

DME or RADAR required. RADAR required for procedure entry.

Simultaneous approach authorized. CLOV Minimums: For inp ALS, increase S-LOC 19R Cats C/D visibility to RVR 4500.

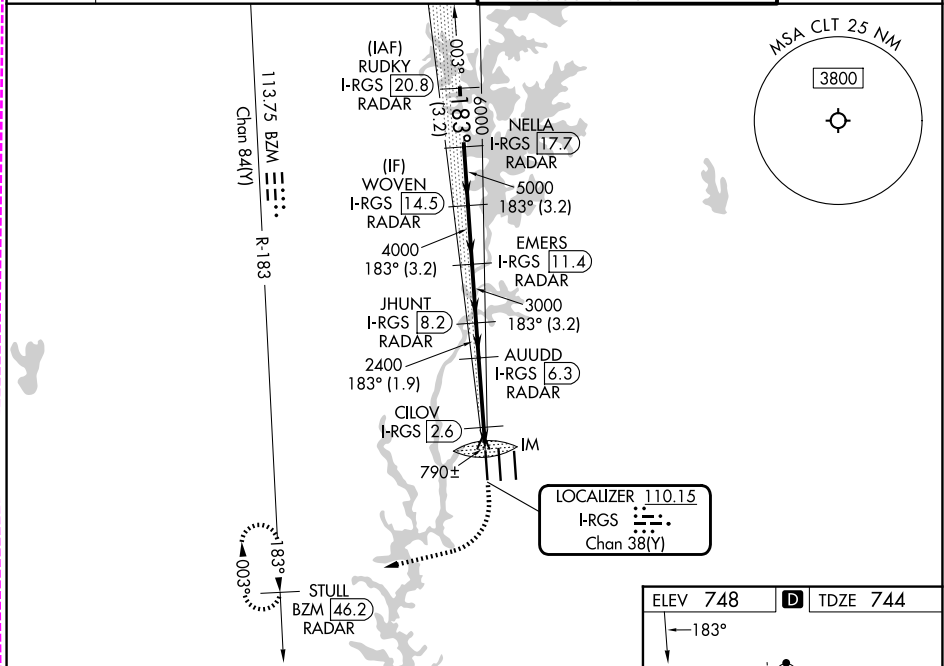
ALSF-2

MISSED APPROACH: Climb to 1200 then climbing right turn to 4000 on heading 280° and on BZM VOR/DME R-183 to STULL/BZM 46.2 DME/RADAR and hold, continue climb-in-hold to 4000.

D-ATIS	CHARLOTTE APP CON	
121.15	128.325 (001°-119°)	257.2 (180°-359°)
	120.05 (120°-295°)	307.8 (360°-179°)
	134.75 (296°-360°)	

CHARLOTTE TOWER	
118.1	257.8 (18L-36R)
126.4	257.8 (18C-36C)
133.35	257.8 (1L-19R)

GND CON	
121.8	348.6 (W)
121.9	348.6 (E)



SE-2, 14 MAY 2026 to 11 JUN 2026

SE-2, 14 MAY 2026 to 11 JUN 2026

RUDKY I-RGS 20.8 RADAR	NELLA I-RGS 17.7 RADAR	WOVEN I-RGS 14.5 RADAR	JHUNT I-RGS 8.2 RADAR	AUUDD I-RGS 6.3 RADAR	CLOV I-RGS 2.6	IM	STULL BZM 46.2
VGSI and ILS glidepath not coincident (VGSI Angle 2.80/TCH 65).							
1200		4000		BZM R-183		STULL BZM 46.2	
hdg 280°							
7000		6000		5000		4000	
3000		2400		1200			
GS 3.00° TCH 55							
-3.2 NM		-3.2 NM		-3.2 NM		-3.2 NM	
-1.9 NM		-3.7 NM		0.5		0.1	
CATEGORY	A		B		C		D
S-ILS 19R	944/18 200 (200-½)						
S-LOC 19R	1200/24 456 (500-½)		1200/45 456 (500-¾)				
CLOV FIX MINIMUMS (DME REQUIRED)							
S-LOC 19R	1040/24 296 (300-½)						

