

LOC/DME I-XUU 110.15 Chan 38(Y)	APP CRS 003°	Rwy Ldg TDZE Apt Elev	9000 744 748
--	------------------------	-----------------------------	---

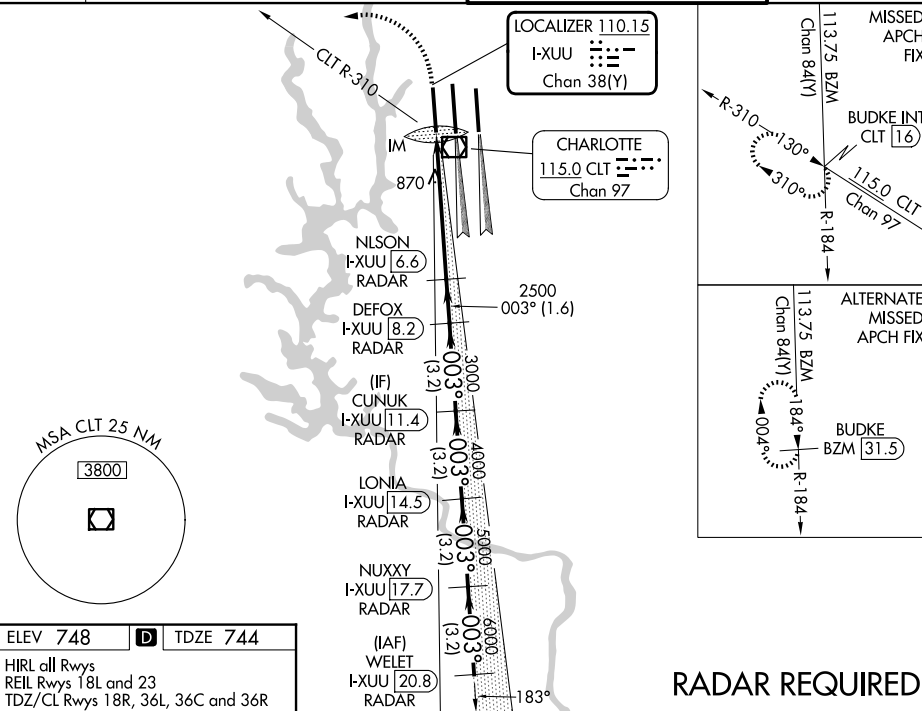
ILS or LOC RWY 36L
CHARLOTTE/DOUGLAS INTL (CLT)

- ▼** Circling NA at night. Simultaneous approach authorized.
- ▲** DME or RADAR required.



MISSED APPROACH: Climb to 1200 then climbing left turn to 4000 on CLT VOR/DME R-310 to BUDKE/CLT 16 DME and hold.

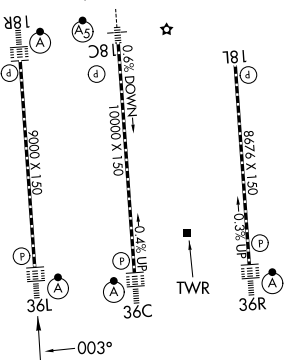
D-ATIS 121.15	CHARLOTTE APP CON 128.325 (001°-119°) 120.05 (120°-295°) 134.75 (296°-360°)	257.2 (180°-359°) 307.8 (360°-179°)	CHARLOTTE TOWER 118.1 257.8 (Rwys 18L-36R) 126.4 257.8 (Rwy 18C-36C) 133.35 257.8 (Rwy 18R-36L)	GND CON 121.8 348.6 (W) 121.9 348.6 (E)
-------------------------	---	--	---	---



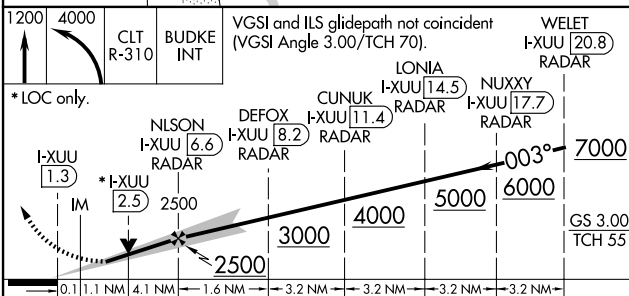
SE-2, 16 APR 2026 to 14 MAY 2026

SE-2, 16 APR 2026 to 14 MAY 2026

ELEV 748	D	TDZE 744
HIRL all Rwys REIL Rwys 18L and 23 TDZ/CL Rwys 18R, 36L, 36C and 36R		



RADAR REQUIRED



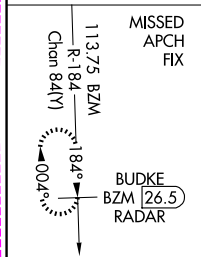
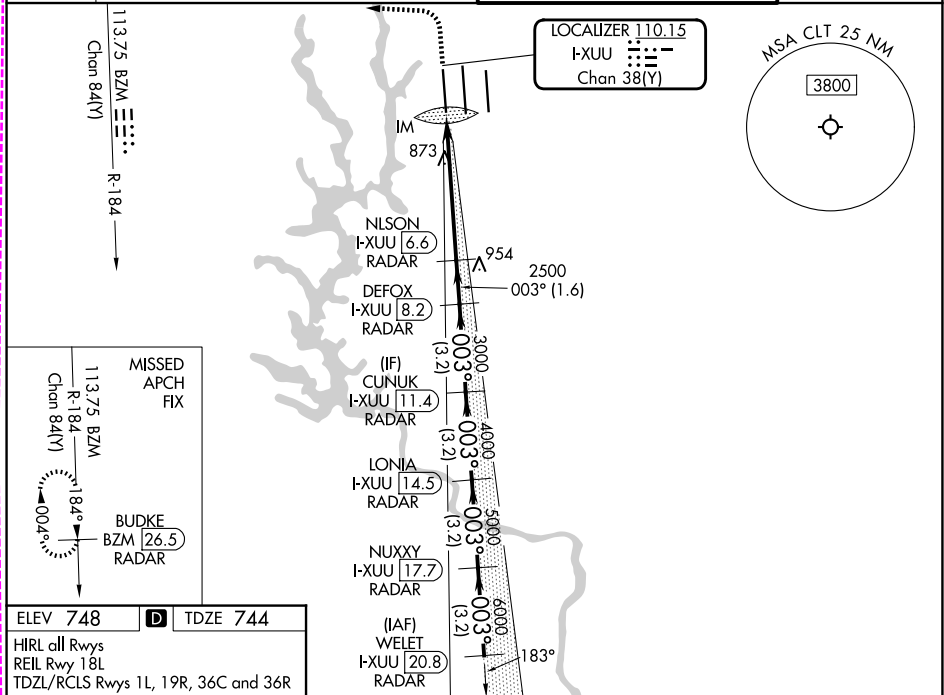
CATEGORY	A	B	C	D
S-ILS 36L	944/18 200 (200-½)			
S-LOC 36L	1180/24	436 (500-½)	1180/40	436 (500-¾)
CIRCLING	1380-1	632 (700-1)	1500-2¼ 752 (800-2¼)	1500-2½ 752 (800-2½)

LOC/DME I-XUU 110.15 Chan 38(Y)	APP CRS 003°	Rwy Ldg TDZE Apt Elev 9000 744 748
--	------------------------	--

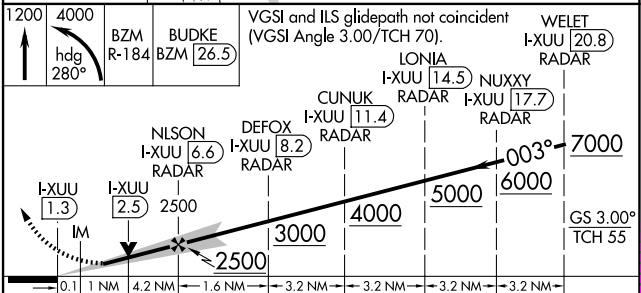
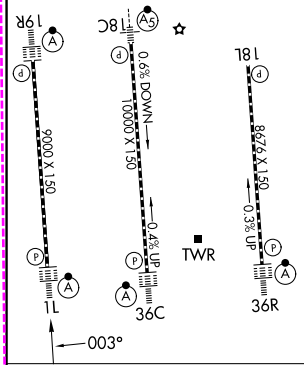
ILS or LOC RWY 1L
CHARLOTTE/DOUGLAS INTL (CLT)

DME or RADAR required. RADAR required for procedure entry.	ALSIF-2	MISSED APPROACH: Climb to 1200 then climbing left turn to 4000 on heading 280° and on BZM VOR/DME R-184 to BUDKE/BZM 26.5 DME/RADAR and hold.
Simultaneous approach authorized. Circling NA at night.		

D-ATIS	CHARLOTTE APP CON		CHARLOTTE TOWER		GND CON
121.15	128.325 (001°-119°) 120.05 (120°-295°) 134.75 (296°-360°)	257.2 (180°-359°) 307.8 (360°-179°)	118.1 (18L-36R) 126.4 (18C-36C) 133.35 (1L-19R)	257.8 (18L-36R) 257.8 (18C-36C) 257.8 (1L-19R)	121.8 348.6 (W) 121.9 348.6 (E)



ELEV 748	D	TDZE 744
HIRL all Rwys		
REIL Rwy 18L		
TDZL/RCLS Rwys 1L, 19R, 36C and 36R		



CATEGORY	A		B		C		D
S-ILS 1L	944/18		200 (200-½)				
S-LOC 1L	1180/24	436 (500-½)	1180/40	436 (500-¾)			
CIRCLING	1380-1	632 (700-1)	1500-2¼	752 (800-2¼)	1500-2½	752 (800-2½)	

SE-2, 14 MAY 2026 to 11 JUN 2026

SE-2, 14 MAY 2026 to 11 JUN 2026