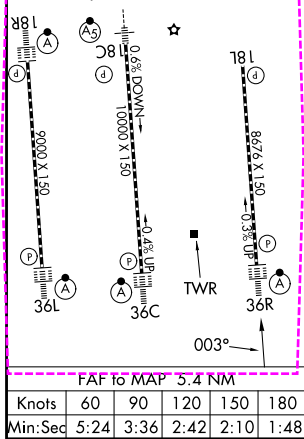
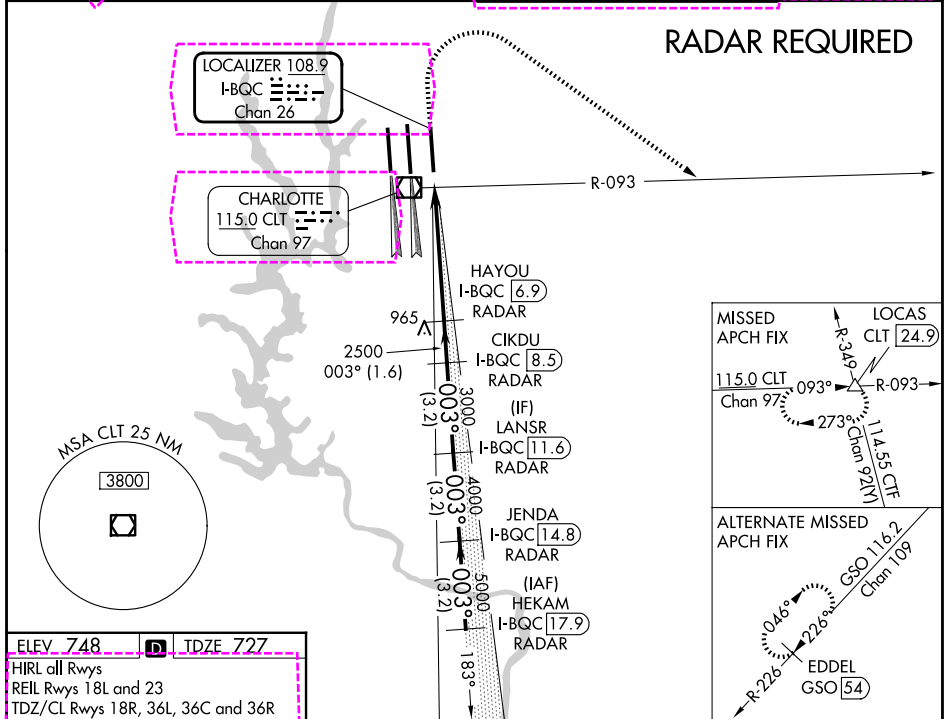


LOC/DME I-BQC 108.9 Chan 26	APP CRS 003°	Rwy Ldg TDZE Apt Elev	8390 727 748
--	------------------------	-----------------------------	---

ILS or LOC RWY 36R

CHARLOTTE/DOUGLAS INTL (CLT)

⚠ Circling NA at night. Simultaneous approach authorized. DME or RADAR required.	ALS-F2 		MISSED APPROACH: Climb to 1320 then climbing right turn to 4000 on CLT VOR/DME R-093 to LOCAS INT/24.9 DME and hold.	
	D-ATIS 121.15	CHARLOTTE APP CON 128.325 (001°-119°) 120.05 (120°-295°) 134.75 (296°-360°)	257.2 (180°-359°) 307.8 (360°-179°)	CHARLOTTE TOWER 118.1 257.8 (Rwys 18L-36R) 126.4 257.8 (Rwy 18C-36C) 133.35 257.8 (Rwy 18R-36L)



1320	4000	CLT R-093	LOCAS	VGSJ and ILS glidepath not coincident (VGSJ Angle 3.00/TCH 74).	HEKAM I-BQC [17.9] RADAR	
*LOC only.				JENDA I-BQC [14.8] RADAR	LANSR I-BQC [11.6] RADAR	
				CIKDU I-BQC [8.5] RADAR	HAYOU I-BQC [6.9] RADAR	
				I-BQC [1.5] *I-BQC [2.5] 2500	3000 4000 5000 6000	
				1 NM	4.4 NM 1.6 NM 3.2 NM 3.2 NM 3.2 NM	
CATEGORY	A		B		C	D
S-ILS 36R			927/18		200 (200-½)	
S-LOC 36R	1120/24	393 (400-½)	1120/35		393 (400-½)	
CIRCLING	1380-1	632 (700-1)	1500-2¼		752 (800-2¼)	1500-2½
			752 (800-2¼)		752 (800-2½)	

SE-2, 16 APR 2026 to 14 MAY 2026

SE-2, 16 APR 2026 to 14 MAY 2026

CHARLOTTE, NORTH CAROLINA

AL-78 (FAA)

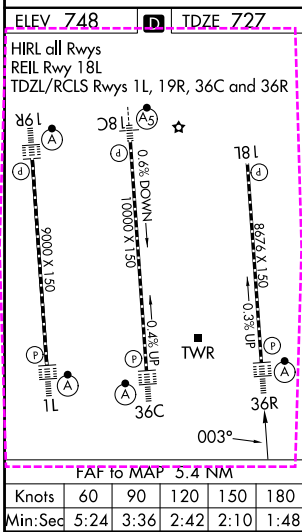
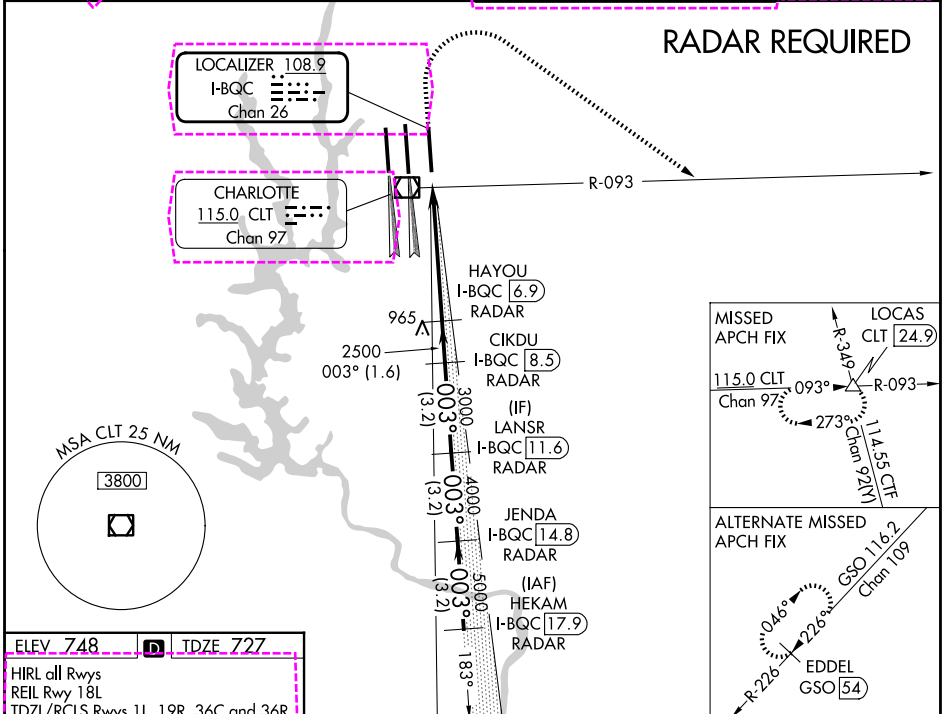
26134

LOC/DME I-BQC 108.9 Chan 26	APP CRS 003°	Rwy Ldg 8390 TDZE 727 Apt Elev 748
--	------------------------	---

ILS or LOC RWY 36R

CHARLOTTE/DOUGLAS INTL (CLT)

⚠ Circling NA at night. Simultaneous approach authorized. DME or RADAR required.	ALSF-2	MISSED APPROACH: Climb to 1320 then climbing right turn to 4000 on CLT VOR/DME R-093 to LOCAS INT/24.9 DME and hold.	
	D-ATIS 121.15	CHARLOTTE APP CON 128.325 (001°-119°) 120.05 (120°-295°) 134.75 (296°-360°)	CHARLOTTE TOWER 118.1 257.8 (18L-36R) 126.4 257.8 (18C-36C) 133.35 257.8 (1L-19R)



1320	4000	CLT R-093	LOCAS	VGSJ and ILS glidepath not coincident (VGSJ Angle 3.00/TCH 74).	HEKAM I-BQC [17.9] RADAR			
* LOC only.				JENDA I-BQC [14.8] RADAR	LANSR I-BQC [11.6] RADAR			
				HAYOU I-BQC [8.5] RADAR	CIKDU I-BQC [8.5] RADAR			
				I-BQC [1.5]	*I-BQC [2.5]			
				2500	3000			
				4000	5000			
				6000	003°			
				GS 3.00° TCH 55				
				1 NM	4.4 NM			
				1.6 NM	3.2 NM			
				3.2 NM	3.2 NM			
				3.2 NM				
CATEGORY	A		B		C		D	
S-ILS 36R			927/18		200 (200-½)			
S-LOC 36R	1120/24		393 (400-½)		1120/35		393 (400-¾)	
CIRCLING	1380-1		632 (700-1)		1500-2¼		1500-2½	
					752 (800-2¼)		752 (800-2½)	

SE-2, 14 MAY 2026 to 11 JUN 2026

SE-2, 14 MAY 2026 to 11 JUN 2026

CHARLOTTE, NORTH CAROLINA
Amdt 12A 24MAY18

35°13'N-80°57'W

CHARLOTTE/DOUGLAS INTL (CLT)
ILS or LOC RWY 36R