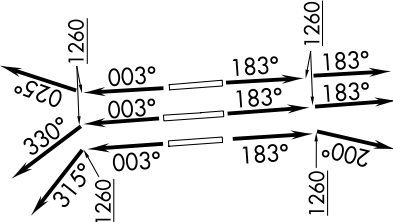
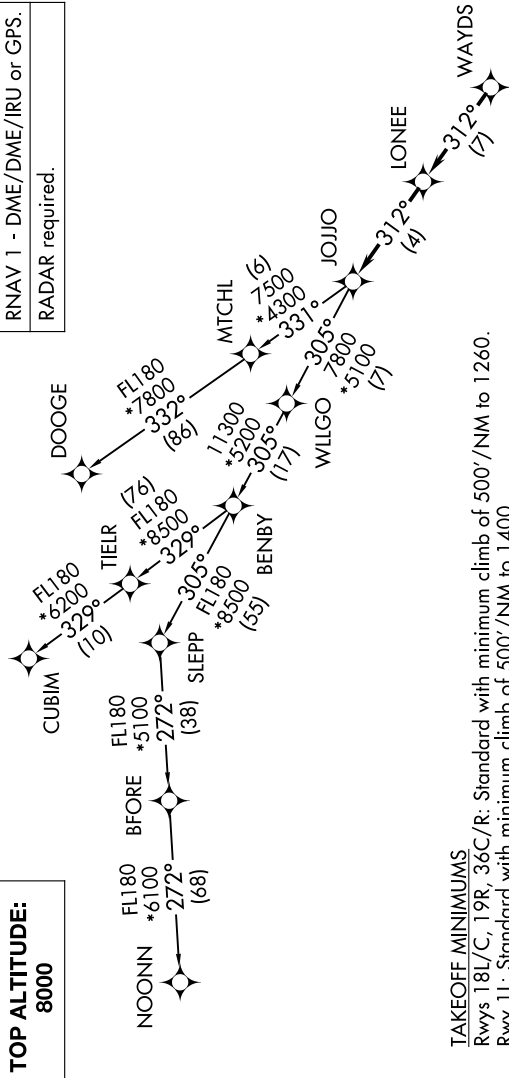


# JOJJO SIX DEPARTURE (RNAV)

CHARLOTTE DEP CON  
120.5 257.2  
D-ATIS DEP  
132.1  
CLNC DEL  
127.15 348.6  
CPDIC  
GND CON  
121.8 348.6 (W)  
121.9 348.6 (E)  
CHARLOTTE TOWER  
118.1 257.8 (181-36R)  
126.4 257.8 (18C-36C)  
133.35 257.8 (1L-19R)

RNAV 1 - DME/DME/IRU or GPS.  
RADAR required.



(CONTINUED ON FOLLOWING PAGE)

NOTE: Chart not to scale.

# JOJJO SIX DEPARTURE (RNAV)

# JOJJO SIX DEPARTURE (RNAV)



## DEPARTURE ROUTE DESCRIPTION SEE ADDITIONAL REQUIREMENTS ON AAUP

TAKEOFF RUNWAY 1L: Climb on heading 003° to 1260, then on heading 315° or as assigned by ATC for RADAR vectors to WAYDS, thence. . .

TAKEOFF RUNWAYS 18L/C: Climb on heading 183° to 1260, then on heading 183° or as assigned by ATC for RADAR vectors to WAYDS, thence. . .

TAKEOFF RUNWAY 19R: Climb on heading 183° to 1260, then on heading 200° or as assigned by ATC for RADAR vectors to WAYDS, thence. . .

TAKEOFF RUNWAY 36C: Climb on heading 003° to 1260, then on heading 330° or as assigned by ATC for RADAR vectors to WAYDS, thence. . .

TAKEOFF RUNWAY 36R: Climb on heading 003° to 1260, then on heading 025° or as assigned by ATC for RADAR vectors to WAYDS, thence. . .

. . .on depicted route to JOJJO, then on assigned transition. Maintain 8000.  
Expect filed altitude 10 minutes after departure.

CUBIM TRANSITION (JOJJO6.CUBIM)

DOOGE TRANSITION (JOJJO6.DOOGE)

NOONN TRANSITION (JOJJO6.NOONN)

SE-2, 14 MAY 2026 to 11 JUN 2026

SE-2, 14 MAY 2026 to 11 JUN 2026