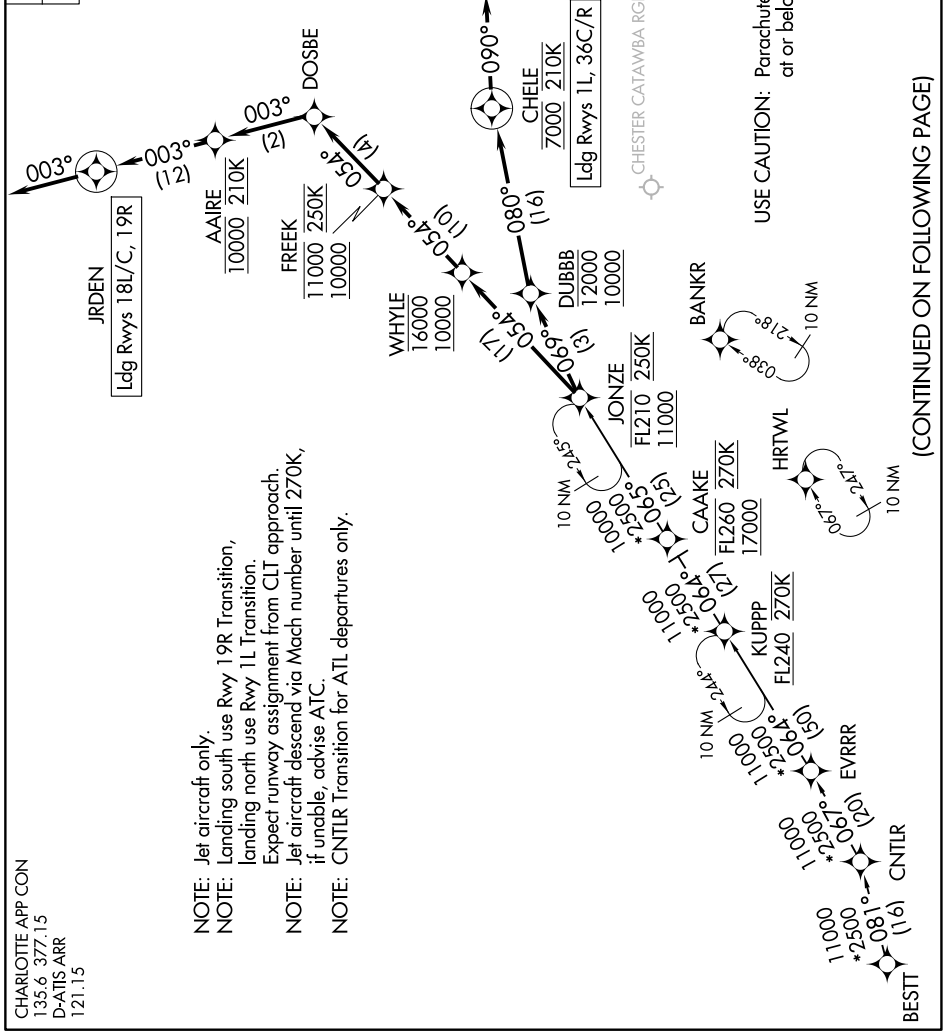


SE-2, 14 MAY 2026 to 11 JUN 2026

RNAV 1 - DME/DME/IRU or GPS.
 RADAR required.



CHARLOTTE APP CON
 135.6 377.15
 D-ATIS ARR
 121.15

SE-2, 14 MAY 2026 to 11 JUN 2026

ARRIVAL ROUTE DESCRIPTION

BESTT TRANSITION (BESTT.JONZE6)
CNTRLR TRANSITION (CNTRLR.JONZE6)

LANDING RUNWAYS 1L, 36C/R: From JONZE on track 069° to cross DUBBB between 10000 and 12000, then on track 080° to cross CHELE at 7000 and at 210K, then on track 090°. Expect RADAR vectors to final approach course.

LANDING RUNWAYS 18L/C, 19R: From JONZE on track 054° to cross WHYLE between 10000 and 16000, then on track 054° to cross FREEK between 10000 and 11000 and at 250K, then on track 054° to DOSBE, then on track 003° to cross AAIRE at 10000 and at 210K, then on track 003° to JRDEN, then on track 003°. Expect RADAR vectors to final approach course.

SE-2, 14 MAY 2026 to 11 JUN 2026

SE-2, 14 MAY 2026 to 11 JUN 2026