

# JONZE FIVE ARRIVAL (RNAV)

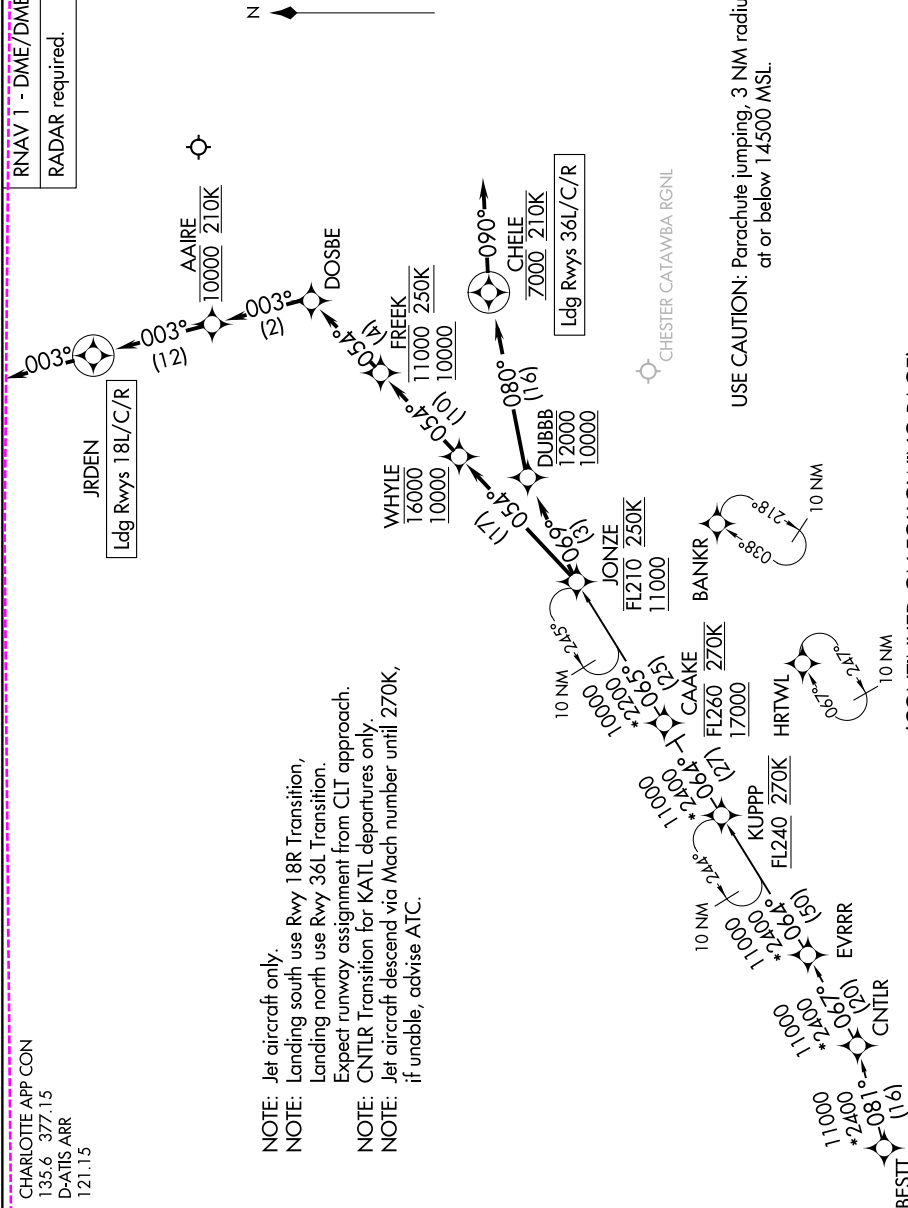
AL-78 (FAA)

CHARLOTTE/DOUGLAS INTL (CLT)  
CHARLOTTE, NORTH CAROLINA

CHARLOTTE APP CON  
135.6 377.15  
D-ATIS ARR  
121.15

RNAV 1 - DME/DME/IRU or GPS.  
RADAR required.

- NOTE: Jet aircraft only.
- NOTE: Landing south use Rwy 18R Transition, Landing north use Rwy 36L Transition.
- NOTE: Expect runway assignment from CLT approach.
- NOTE: CNTLR Transition for KATL departures only.
- NOTE: Jet aircraft descend via Mach number until 270K, if unable, advise ATC.



NOTE: Chart not to scale.

(CONTINUED ON FOLLOWING PAGE)

SE-2, 16 APR 2026 to 14 MAY 2026

# JONZE FIVE ARRIVAL (RNAV)

(JONZE JONZE5) 16MAY24

CHARLOTTE, NORTH CAROLINA  
CHARLOTTE/DOUGLAS INTL (CLT)

(JONZE.JONZE5) 24137  
JONZE FIVE ARRIVAL (RNAV)

AL-78 (FAA)

CHARLOTTE/DOUGLAS INTL (CLT)  
CHARLOTTE, NORTH CAROLINA

ARRIVAL ROUTE DESCRIPTION

BESTT TRANSITION (BESTT.JONZE5)  
CNTRLR TRANSITION (CNTRLR.JONZE5)

LANDING RUNWAYS 18L/C/R: From JONZE on track 054° to cross WHYLE between 10000 and 16000, then on track 054° to cross FREEK between 10000 and 11000 and at 250K, then on track 054° to DOSBE, then on track 003° to cross AAIRE at 10000 and at 210K, then on track 003° to JRDEN, then on track 003°. Expect RADAR vectors to final approach course.

LANDING RUNWAYS 36L/C/R: From JONZE on track 069° to cross DUBBB between 10000 and 12000, then on track 080° to cross CHELE at 7000 and at 210K, then on track 090°. Expect RADAR vectors to final approach course.

SE-2, 16 APR 2026 to 14 MAY 2026

SE-2, 16 APR 2026 to 14 MAY 2026

JONZE FIVE ARRIVAL (RNAV)  
(JONZE.JONZE5) 16MAY24

CHARLOTTE, NORTH CAROLINA  
CHARLOTTE/DOUGLAS INTL (CLT)

# JONZE SIX ARRIVAL (RNAV)

AL-78 (FAA)

CHARLOTTE/DOUGLAS INTL (CLT)  
CHARLOTTE, NORTH CAROLINA

CHARLOTTE APP CON  
135.6 377.15  
D-ATIS ARR  
121.15

# JONZE SIX ARRIVAL (RNAV)

(JONZE.JONZE6) 14MAY26

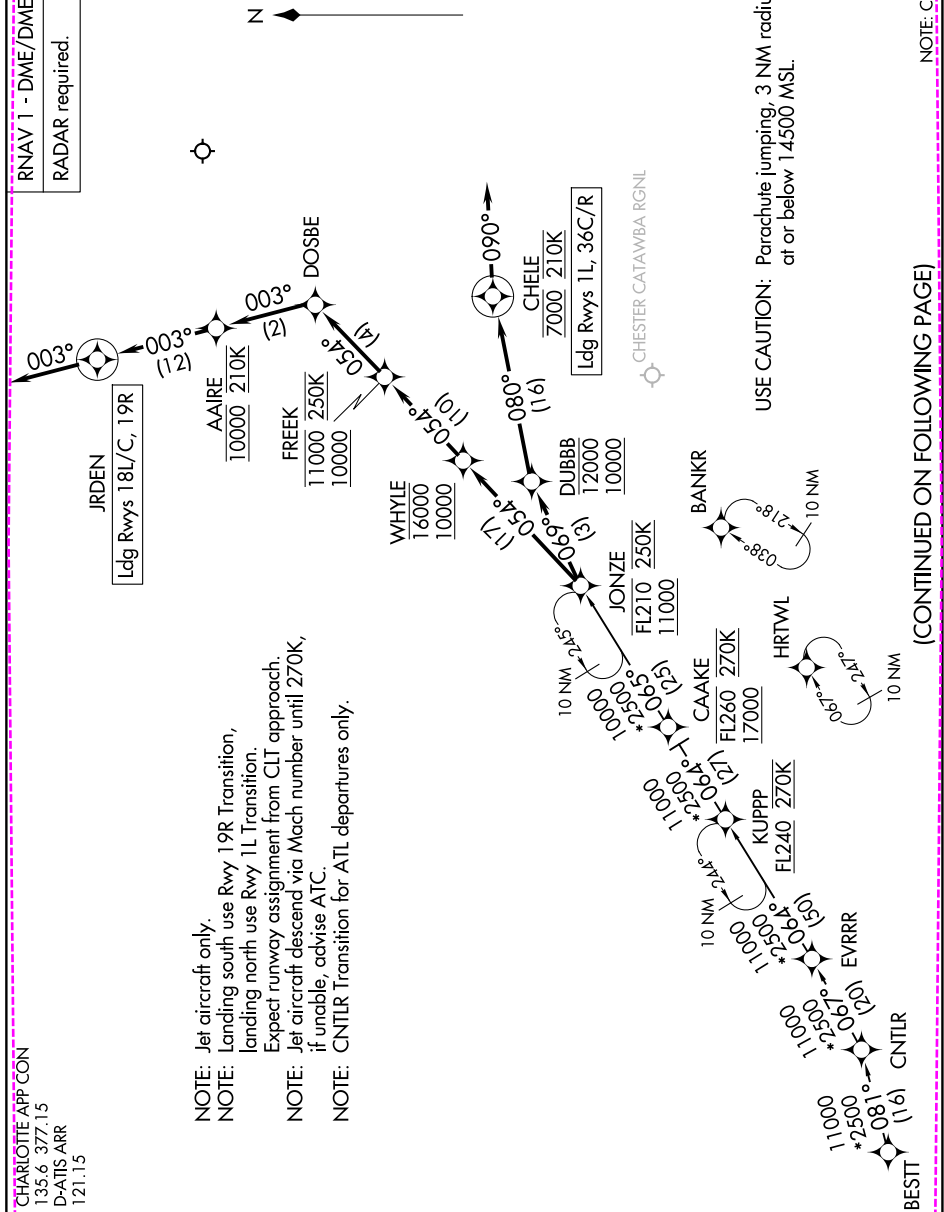
CHARLOTTE, NORTH CAROLINA  
CHARLOTTE/DOUGLAS INTL (CLT)

RNAV 1 - DME/DME/IRU or GPS.  
RADAR required.

SE-2, 14 MAY 2026 to 11 JUN 2026

SE-2, 14 MAY 2026 to 11 JUN 2026

- NOTE: Jet aircraft only.
- NOTE: Landing south use Rwy 19R Transition, landing north use Rwy 1L Transition. Expect runway assignment from CLT approach.
- NOTE: Jet aircraft descend via Mach number until 270K, if unable, advise ATIS.
- NOTE: CNTLR Transition for ATL departures only.



(JONZE.JONZE6) 26134  
JONZE SIX ARRIVAL (RNAV)

AL-78 (FAA)

CHARLOTTE/DOUGLAS INTL (CLT)  
CHARLOTTE, NORTH CAROLINA

ARRIVAL ROUTE DESCRIPTION

BESTT TRANSITION (BESTT.JONZE6)  
CNTRLR TRANSITION (CNTRLR.JONZE6)

LANDING RUNWAYS 1L, 36C/R: From JONZE on track 069° to cross DUBBB between 10000 and 12000, then on track 080° to cross CHELE at 7000 and at 210K, then on track 090°. Expect RADAR vectors to final approach course.

LANDING RUNWAYS 18L/C, 19R: From JONZE on track 054° to cross WHYLE between 10000 and 16000, then on track 054° to cross FREEK between 10000 and 11000 and at 250K, then on track 054° to DOSBE, then on track 003° to cross AAIRE at 10000 and at 210K, then on track 003° to JRDEN, then on track 003°. Expect RADAR vectors to final approach course.

SE-2, 14 MAY 2026 to 11 JUN 2026

SE-2, 14 MAY 2026 to 11 JUN 2026

JONZE SIX ARRIVAL (RNAV)  
(JONZE.JONZE6) 14MAY26

CHARLOTTE, NORTH CAROLINA  
CHARLOTTE/DOUGLAS INTL (CLT)