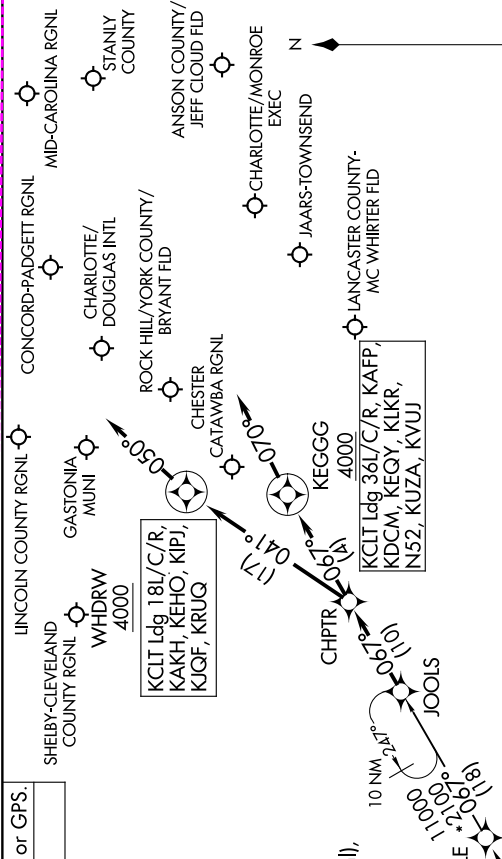


JOOLES ONE ARRIVAL (RNAV)

CHARLOTTE, NORTH CAROLINA

SE-2, 16 APR 2026 to 14 MAY 2026



Use CAUTION: Parachute jumping 17 NM NE of CHPTR, 3 NM radius KDCM (Chester-Catawba Rgnl), AOB 14,500 MSL.

RNAV 1 - DME/DME/IRU or GPS. RADAR required.

CHARLOTTE APP CON
135.6 377.15
CLT D-ATIS ARR
121.15
JQG ATIS
133.675

ARRIVAL ROUTE DESCRIPTION

THRSR TRANSITION (THRSR.JOOLS1)
WANS TRANSITION (WANS.JOOLS1)

KCLT: From JOOLS on track 067° to CHPTR.
LANDING RUNWAYS 18L/C/R: From CHPTR on track 041° to cross WHDRW at or above 4000, then on track 050°. Expect RADAR vectors to final approach course.
LANDING RUNWAYS 36L/C/R: From CHPTR on track 067° to cross KEGGG at or above 4000, then on track 070°. Expect RADAR vectors to final approach course.
LANDING KAKH/KRUG/KEHO/KIQF/KIPJ: From JOOLS on track 067° to CHPTR, then on track 041° to cross WHDRW at or above 4000, then on track 050°. Expect RADAR vectors to final approach course.
LANDING KDCM/KEGY/KUZA/KAFP/NS2/KVUJ/KIKR: From JOOLS on track 067° to CHPTR, then on track 067° to cross KEGGG at or above 4000, then on track 070°. Expect RADAR vectors to final approach course.

NOTE: Chart not to scale.

JOOLES ONE ARRIVAL (RNAV)

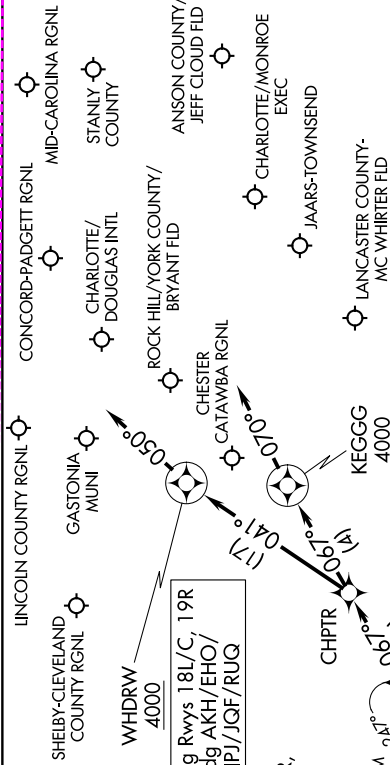
CHARLOTTE, NORTH CAROLINA

SE-2, 16 APR 2026 to 14 MAY 2026

SE-2, 14 MAY 2026 to 11 JUN 2026

CHARLOTTE APP CON
135.6 377.15
CLT D-ATIS ARR
121.15
JQG ATIS
133.675

RNAV 1 - DME/DME/IRU or GPS.
RADAR required.



USE CAUTION: Parachute jumping 17 NM northeast of CHPTPR, 3 NM radius DCM (Chester Catawba Rgnl), at or below 14500 MSL.



CLT Ldg Rwys 1L, 36C/R
Ldg AFP/DCM/EQY/
IKR/N52/UZA/VUJ

ARRIVAL ROUTE DESCRIPTION

THRSR TRANSITION (THRSR.JOOLS2)
WANSA TRANSITION (WANSA.JOOLS2)

CLT: From JOOLS on track 067° to CHPTPR.
LANDING RUNWAYS 1L, 36C/R: From CHPTPR on track 067° to cross KEGGG at or above 4000, then on track 070°. Expect RADAR vectors to final approach course.
LANDING RUNWAYS 18L/C, 19R: From CHPTPR on track 041° to cross WDRW at or above 4000, then on track 050°. Expect RADAR vectors to final approach course.
LANDING DCM/EQY/UZA/AFP/N52/VUJ/IKR: From JOOLS on track 067° to CHPTPR, then on track 067° to cross KEGGG at or above 4000, then on track 070°. Expect RADAR vectors to final approach course.
LANDING AKH/RUG/EHO/JQF/IPJ: From JOOLS on track 067° to CHPTPR, then on track 041° to cross WDRW at or above 4000, then on track 050°. Expect RADAR vectors to final approach course.

NOTE: Chart not to scale.

SE-2, 14 MAY 2026 to 11 JUN 2026