

(KILNS5.KILNS) 25051

AL-78 (FAA)

CHARLOTTE/DOUGLAS INTL (CLT)

CHARLOTTE, NORTH CAROLINA

KILNS FIVE DEPARTURE (RNAV)

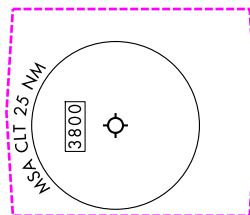
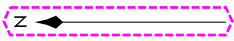
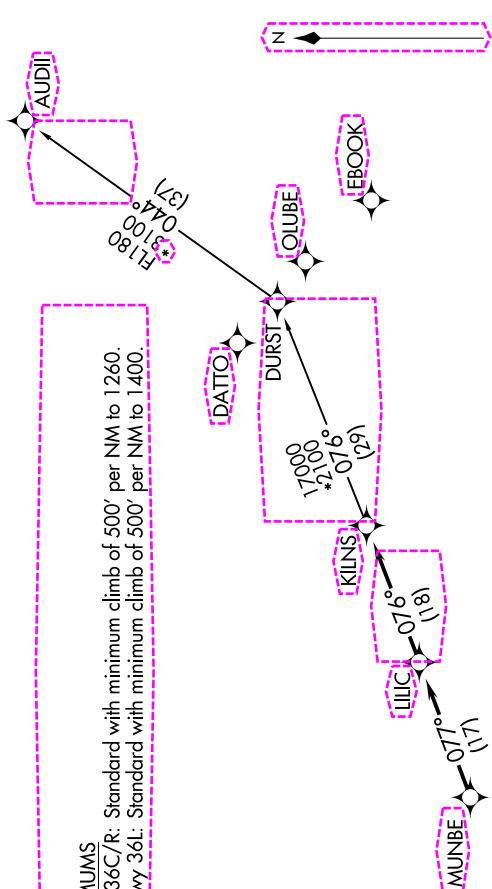
SE-2, 16 APR 2026 to 14 MAY 2026

CHARLOTTE DEP CON
 124.0 307.8
 D-ATIS DEP 132.1
 CLNC DEL
 127.15 348.6
 CPDLC
 GND CON
 121.8 348.6 (WEST)
 121.9 348.6 (EAST)
 CHARLOTTE TOWER
 118.1 257.8 (Rwys 18L-34R)
 126.4 257.8 (Rwy 18C-34C)
 133.35 257.8 (Rwy 18R-36L)

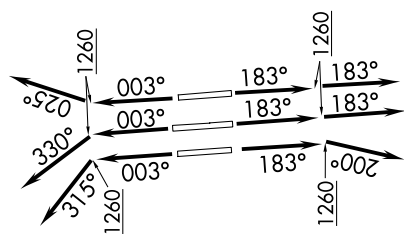
RNAV - DME/DME/IRU or GPS.
 RADAR required.

TAKEOFF MINIMUMS
 Rwys 18L/C/R, 34C/R: Standard with minimum climb of 500' per NM to 1260.
 Rwy 36L: Standard with minimum climb of 500' per NM to 1400.

TOP ALTITUDE:
8000



NOTE: For turbojets only.
 NOTE: Transponder code will be issued via PDC or Charlotte CLNC DEL.
 NOTE: Accelerate to 250K, if unable advise ATC. Upon reaching 10000 MSL, accelerate to and maintain 280K, if unable advise ATC.
 NOTE: If unable to accept climb rates, advise ATC on initial contact.



(CONTINUED ON FOLLOWING PAGE)

SE-2, 16 APR 2026 to 14 MAY 2026

NOTE: Chart not to scale.

KILNS FIVE DEPARTURE (RNAV)

(KILNS5.KILNS) 21MAR24

CHARLOTTE, NORTH CAROLINA
CHARLOTTE/DOUGLAS INTL (CLT)

(KILNS5.KILNS) 24081

AL-78 (FAA)

CHARLOTTE/DOUGLAS INTL (CLT)

CHARLOTTE, NORTH CAROLINA

KILNS FIVE DEPARTURE (RNAV)



DEPARTURE ROUTE DESCRIPTION SEE ADDITIONAL REQUIREMENTS ON AAUP

TAKEOFF RUNWAYS 18L/C: Climb on heading 183° to 1260, then on heading 183° or as assigned by ATC on RADAR vectors to MUNBE, thence. . . .

TAKEOFF RUNWAY 18R: Climb on heading 183° to 1260, then on heading 200° or as assigned by ATC on RADAR vectors to MUNBE, thence. . . .

TAKEOFF RUNWAY 36L: Climb on heading 003° to 1260, then on heading 315° or as assigned by ATC on RADAR vectors to MUNBE, thence. . . .

TAKEOFF RUNWAY 36C: Climb on heading 003° to 1260, then on heading 330° or as assigned by ATC on RADAR vectors to MUNBE, thence. . . .

TAKEOFF RUNWAY 36R: Climb on heading 003° to 1260, then on heading 025° or as assigned by ATC on RADAR vectors to MUNBE, thence. . . .

. . . .on depicted route to KILNS, then on AUDII Transition. Maintain 8000.
Expect clearance to filed altitude within 10 minutes after departure.

AUDII TRANSITION (KILNS5.AUDII)

SE-2, 16 APR 2026 to 14 MAY 2026

SE-2, 16 APR 2026 to 14 MAY 2026

KILNS FIVE DEPARTURE (RNAV)

(KILNS5.KILNS) 21MAR24

CHARLOTTE, NORTH CAROLINA

CHARLOTTE/DOUGLAS INTL (CLT)

(KILNS 6. KILNS) 261334

AL-78 (FAA)

CHARLOTTE/DOUGLAS INTL (CLT)

CHARLOTTE, NORTH CAROLINA

KILNS SIX DEPARTURE (RNAV)

SE-2, 14 MAY 2026 to 11 JUN 2026

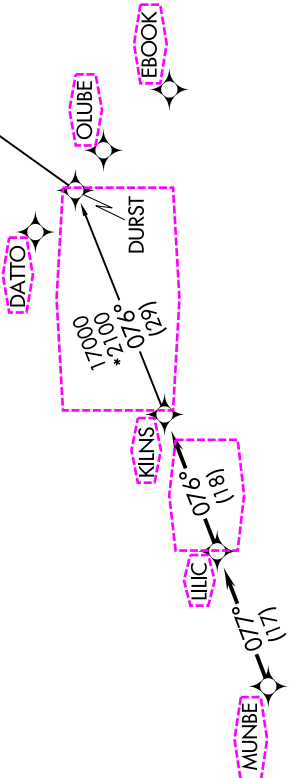
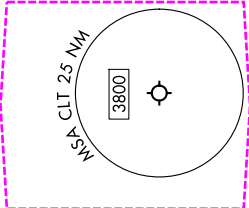
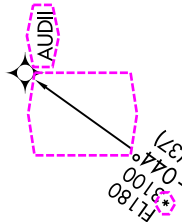
CHARLOTTE DEP CON
124.0 307.8
D-ATIS DEP 132.1
CLNC DEL
127.15 348.6
CPDLC
GND CON
121.8 348.6 (W)
121.9 348.6 (E)
CHARLOTTE TOWER
118.1 257.8 (181-36R)
126.4 257.8 (18C-36C)
133.35 257.8 (11-19R)

RNAV 1 - DME/DME/IRU or GPS.
RADAR required.

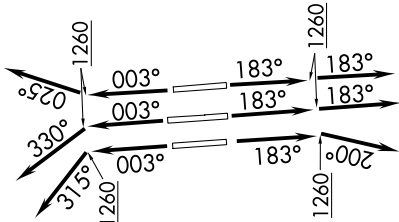
TAKEOFF MINIMUMS

Rwys 18L/C, 19R, 36C/R: Standard with minimum climb of 500'/NM to 1260.
Rwy 1L: Standard with minimum climb of 500'/NM to 1400.

TOP ALTITUDE:
8000



NOTE: Turbojet only.
NOTE: If unable to accept climb rates, advise ATC on initial contact.
NOTE: Transponder code will be issued via PDC or CLT CLNC DEL.
NOTE: Accelerate to 250K; if unable advise ATC. Upon reaching 10000 MSL, accelerate to and maintain 280K, if unable advise ATC.



(CONTINUED ON FOLLOWING PAGE)

SE-2, 14 MAY 2026 to 11 JUN 2026

KILNS SIX DEPARTURE (RNAV)

(KILNS 6. KILNS) 14MAY26

CHARLOTTE, NORTH CAROLINA
CHARLOTTE/DOUGLAS INTL (CLT)

NOTE: Chart not to scale.

KILNS SIX DEPARTURE (RNAV)



DEPARTURE ROUTE DESCRIPTION
SEE ADDITIONAL REQUIREMENTS ON AAUP

TAKEOFF RUNWAY 1L: Climb on heading 003° to 1260, then on heading 315° or as assigned by ATC for RADAR vectors to MUNBE, thence. . .

TAKEOFF RUNWAYS 18L/C: Climb on heading 183° to 1260, then on heading 183° or as assigned by ATC for RADAR vectors to MUNBE, thence. . .

TAKEOFF RUNWAY 19R: Climb on heading 183° to 1260, then on heading 200° or as assigned by ATC for RADAR vectors to MUNBE, thence. . .

TAKEOFF RUNWAY 36C: Climb on heading 003° to 1260, then on heading 330° or as assigned by ATC for RADAR vectors to MUNBE, thence. . .

TAKEOFF RUNWAY 36R: Climb on heading 003° to 1260, then on heading 025° or as assigned by ATC for RADAR vectors to MUNBE, thence. . .

. . . on depicted route to KILNS, then on AUDII Transition. Maintain 8000. Expect filed altitude 10 minutes after departure.

AUDII TRANSITION (KILNS6.AUDII)

SE-2, 14 MAY 2026 to 11 JUN 2026

SE-2, 14 MAY 2026 to 11 JUN 2026