

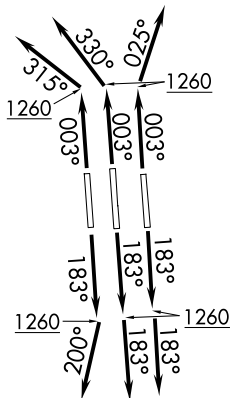
KWEEN SIX DEPARTURE (RNAV)

CHARLOTTE DEP CON
 120.5 257.2 (1L, 36C)
 124.0 307.8 (18L/C, 19R, 36R)
 D-ATIS DEP
 132.1
 CLNC DEL
 127.15 348.6
 CPDLC
 GND CON
 121.8 348.6 (W)
 121.9 348.6 (E)
 CHARLOTTE TOWER
 118.1 257.8 (18L-36R)
 126.4 257.8 (18C-36C)
 133.35 257.8 (1L-19R)

**TOP ALTITUDE:
8000**

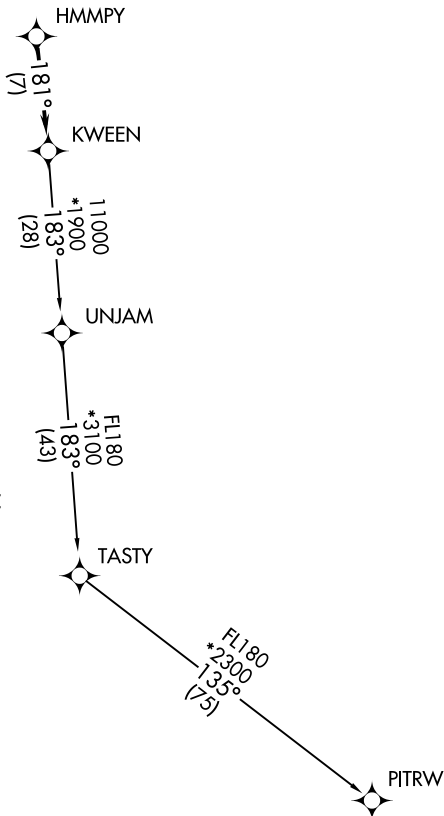
RNAV 1 - DME/DME/IRU or GPS.

RADAR required.

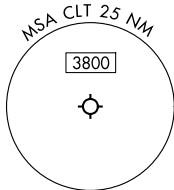


TAKEOFF MINIMUMS

Rwys 18L/C, 19R, 36C/R: Standard with minimum climb of 500'/NM to 1260.
 Rwy 1L: Standard with minimum climb of 500'/NM to 1400.



- NOTE: Turbojet only.
- NOTE: Transponder code will be issued via PDC or CLT CLNC DEL.
- NOTE: If unable to accept climb rates, advise ATC on initial contact.
- NOTE: Accelerate to 250K, if unable advise ATC. Upon reaching 10000 MSL, accelerate to and maintain 280K, if unable advise ATC.



NOTE: Chart not to scale.

(CONTINUED ON FOLLOWING PAGE)

KWEEN SIX DEPARTURE (RNAV)



DEPARTURE ROUTE DESCRIPTION SEE ADDITIONAL REQUIREMENTS ON AAUP

TAKEOFF RUNWAY 1L: Climb on heading 003° to 1260, then on heading 315° or as assigned by ATC for RADAR vectors to HMMPY, thence. . .

TAKEOFF RUNWAYS 18L/C: Climb on heading 183° to 1260, then on heading 183° or as assigned by ATC for RADAR vectors to HMMPY, thence. . .

TAKEOFF RUNWAY 19R: Climb on heading 183° to 1260, then on heading 200° or as assigned by ATC for RADAR vectors to HMMPY, thence. . .

TAKEOFF RUNWAY 36C: Climb on heading 003° to 1260, then on heading 330° or as assigned by ATC for RADAR vectors to HMMPY, thence. . .

TAKEOFF RUNWAY 36R: Climb on heading 003° to 1260, then on heading 025° or as assigned by ATC for RADAR vectors to HMMPY, thence. . .

. . .on track 181° to KWEEN, then on assigned transition. Maintain 8000. Expect filed altitude 10 minutes after departure.

PITRW TRANSITION (KWEEN6.PITRW)

UNJAM TRANSITION (KWEEN6.UNJAM)

SE-2, 14 MAY 2026 to 11 JUN 2026

SE-2, 14 MAY 2026 to 11 JUN 2026