

(RYFLE.MLLET3) 24 37

AL-78 (FAA)

CHARLOTTE/DOUGLAS INTL (CLT)

# MILLET THREE ARRIVAL (RNAV)

CHARLOTTE, NORTH CAROLINA

CHARLOTTE APP CON  
126.15 282.325  
D-ATIS ARR 121.115

RNAV 1 - DME/DME/IRU OR GPS.  
RADAR required.

## ARRIVAL ROUTE DESCRIPTION

OKNEE TRANSITION (OKNEE.MLLET3)  
TORQD TRANSITION (TORQD.MLLET3)

CLT: From RYFLE on track 308° to YELLS, then on track 308° to MLLET, then on track 306° to MANGY.

LANDING RUNWAYS 18L/C/R: From MANGY on track 306° to CEZUN, then on track 306° to DOOMY, then on track 326° to POORE, then on track 003° to LEEKS, then on track 003° to INNOR, then on track 003° to HANDO, then on track 003°. Expect RADAR vectors to final approach course.

LANDING RUNWAYS 36L/C/R: From MANGY on track 273° to GATEE, then on track 273°. Expect RADAR vectors to final approach course.

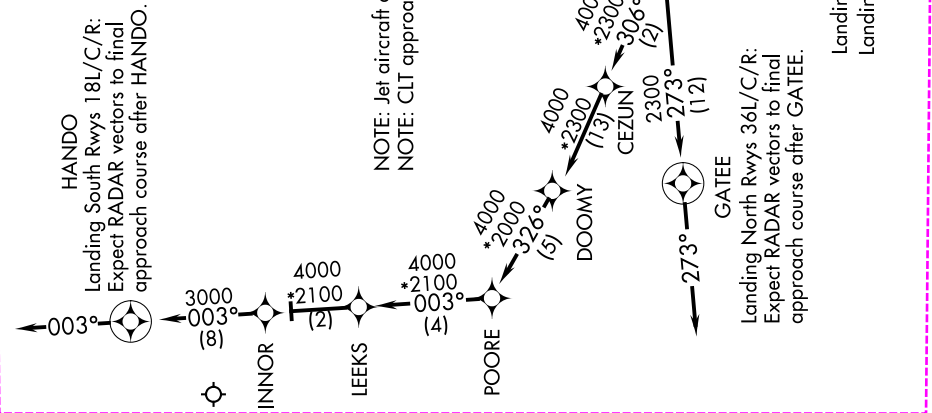
NOTE: Chart not to scale.

SE-2, 16 APR 2026 to 14 MAY 2026

**HANDO**  
Landing South Rwys 18L/C/R:  
Expect RADAR vectors to final approach course after HANDO.



NOTE: Jet aircraft only.  
NOTE: CLT approach will assign landing runway.



Landing South: Expect 14000 250K  
Landing North: Expect 12000 250K

MILLET THREE ARRIVAL (RNAV)  
(RYFLE.MLLET3) 16MAY24

CHARLOTTE, NORTH CAROLINA  
CHARLOTTE/DOUGLAS INTL (CLT)

SE-2, 16 APR 2026 to 14 MAY 2026

(RYFLE.MLLET4) 26.34

AL-78 (FAA)

CHARLOTTE/DOUGLAS INTL (CLT)

# MILLET FOUR ARRIVAL (RNAV)

CHARLOTTE, NORTH CAROLINA

CHARLOTTE APP CON  
126.15 282.325  
D-ATIS ARR  
121.15

RNAV 1 - DME/DME/IRU or GPS.  
RADAR required.

NOTE: Jet aircraft only.  
NOTE: CLT approach will assign landing runway.

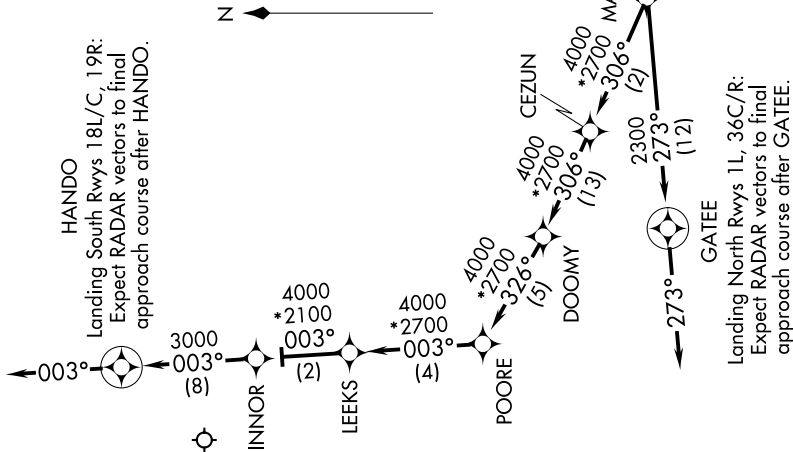
## ARRIVAL ROUTE DESCRIPTION

OKNEE TRANSITION (OKNEE.MLLET4)  
TORQD TRANSITION (TORQD.MLLET4)

From RYFILE on track 308° to YELLS, then on track 308° to MILLET, then on track 306° to MANGY.

**LANDING RUNWAYS 1L, 36C/R:** From MANGY on track 273° to GATEE, then on track 273°. Expect RADAR vectors to final approach course.

**LANDING RUNWAYS 18L/C, 19R:** From MANGY on track 306° to CEZUN, then on track 306° to DOOMY, then on track 326° to POORE, then on track 003° to LEEKS, then on track 003° to INNOR, then on track 003° to HANDO, then on track 003°. Expect RADAR vectors to final approach course.



Landing South: Expect 1400K 250K  
Landing North: Expect 1200K 250K

NOTE: Chart not to scale.

# MILLET FOUR ARRIVAL (RNAV)

(RYFLE.MLLET4) 14MAY26

CHARLOTTE, NORTH CAROLINA  
CHARLOTTE/DOUGLAS INTL (CLT)

SE-2, 14 MAY 2026 to 11 JUN 2026

SE-2, 14 MAY 2026 to 11 JUN 2026