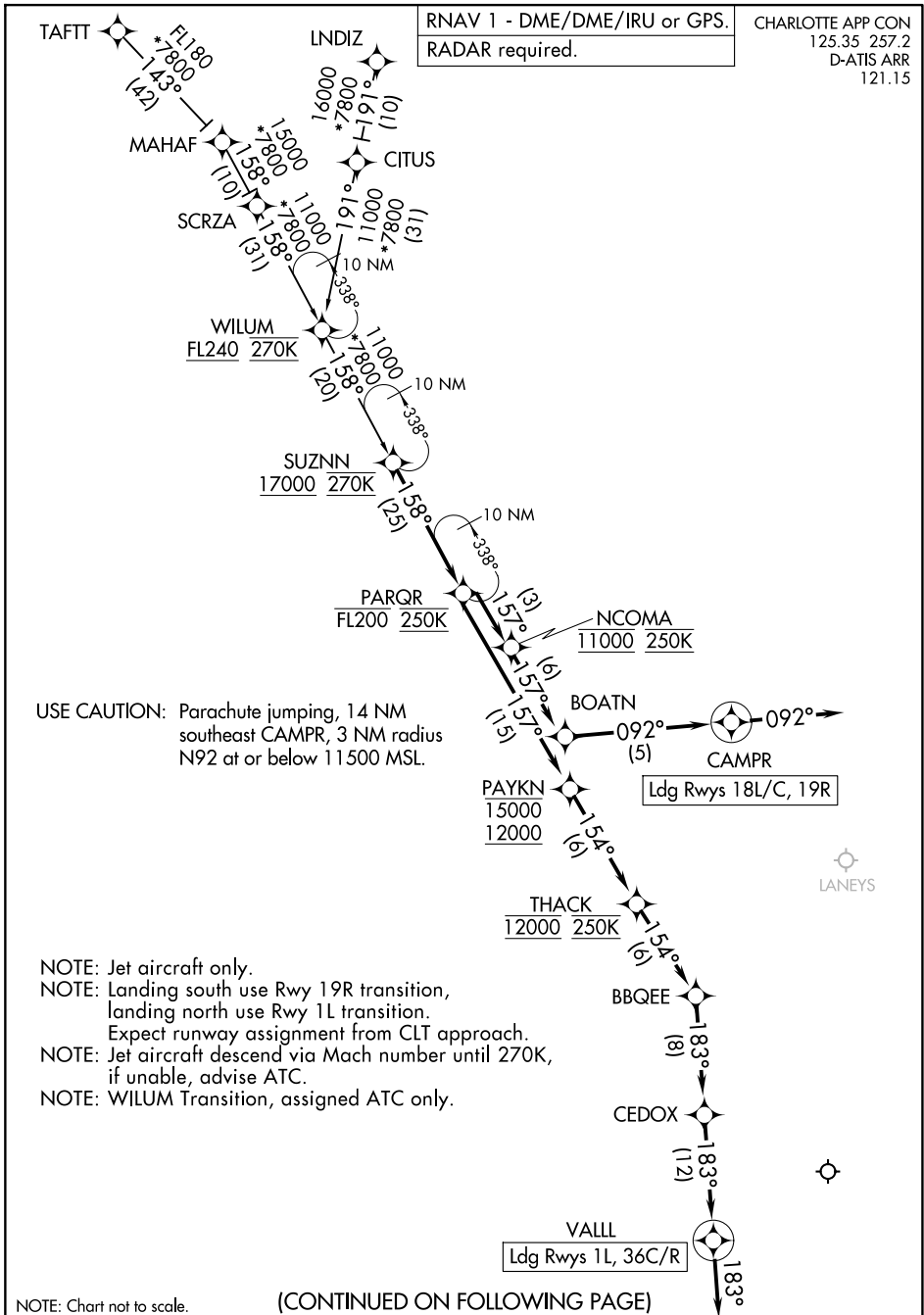


PARQR FIVE ARRIVAL (RNAV)



SE-2, 14 MAY 2026 to 11 JUN 2026

SE-2, 14 MAY 2026 to 11 JUN 2026

PARQR FIVE ARRIVAL (RNAV)

PARQR FIVE ARRIVAL (RNAV)

ARRIVAL ROUTE DESCRIPTION

LNDIZ TRANSITION (LNDIZ.PARQR5)

TAFTT TRANSITION (TAFTT.PARQR5)

WILUM TRANSITION (WILUM.PARQR5)

From SUZNN on track 158° to cross PARQR at or below FL200 and at 250K.

LANDING RUNWAYS 1L, 36C/R: From PARQR on track 157° to cross PAYKN between 12000 and 15000, then on track 154° to cross THACK at 12000 and at 250K, then on track 154° to BBQEE, then on track 183° to CEDOX, then on track 183° to VALL, then on track 183°. Expect RADAR vectors to final approach course.

LANDING RUNWAYS 18L/C, 19R: From PARQR on track 157° to cross NCOMA at 11000 and at 250K, then on track 157° to BOATN, then on track 092° to CAMPR, then on track 092°. Expect RADAR vectors to final approach course.

SE-2, 14 MAY 2026 to 11 JUN 2026

SE-2, 14 MAY 2026 to 11 JUN 2026