

(SUZNN.PARQR4) 24165

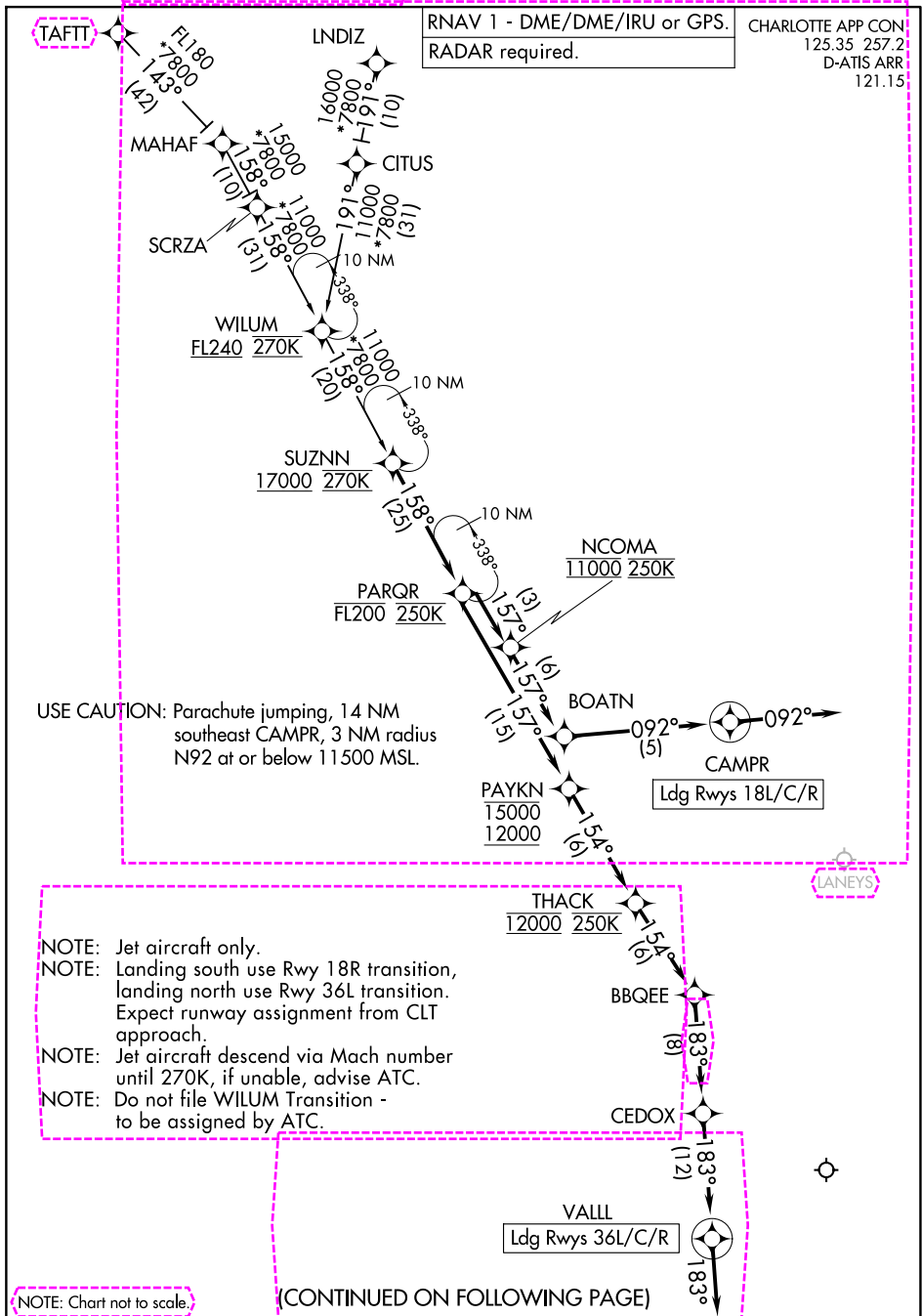
AL-78 (FAA)

CHARLOTTE/DOUGLAS INTL (CLT)
CHARLOTTE, NORTH CAROLINA

PARQR FOUR ARRIVAL (RNAV)

RNAV 1 - DME/DME/IRU or GPS.
RADAR required.

CHARLOTTE APP CON
125.35 257.2
D-ATIS ARR
121.15



SE-2, 16 APR 2026 to 14 MAY 2026

SE-2, 16 APR 2026 to 14 MAY 2026

PARQR FOUR ARRIVAL (RNAV)

(SUZNN.PARQR4) 16MAY24

CHARLOTTE, NORTH CAROLINA
CHARLOTTE/DOUGLAS INTL (CLT)

PARQR FOUR ARRIVAL (RNAV)

ARRIVAL ROUTE DESCRIPTION

LNDIZ TRANSITION (LNDIZ.PARQR4)
TAFTT TRANSITION (TAFTT.PARQR4)
WILUM TRANSITION (WILUM.PARQR4)

From SUZNN on track 158° to cross PARQR at or below FL200 and at 250K.

LANDING RUNWAYS 18L/C/R: From PARQR on track 157° to cross NCOMA at 11000 and at 250K, then on track 157° to BOATN, then on track 092° to CAMPR, then on track 092°. Expect RADAR vectors to final approach course.

LANDING RUNWAYS 36L/C/R: From PARQR on track 157° to cross PAYKN between 12000 and 15000, then on track 154° to cross THACK at 12000 and at 250K, then on track 154° to BBQEE, then on track 183° to CEDOX, then on track 183° to VALL, then on track 183°. Expect RADAR vectors to final approach course.

SE-2, 16 APR 2026 to 14 MAY 2026

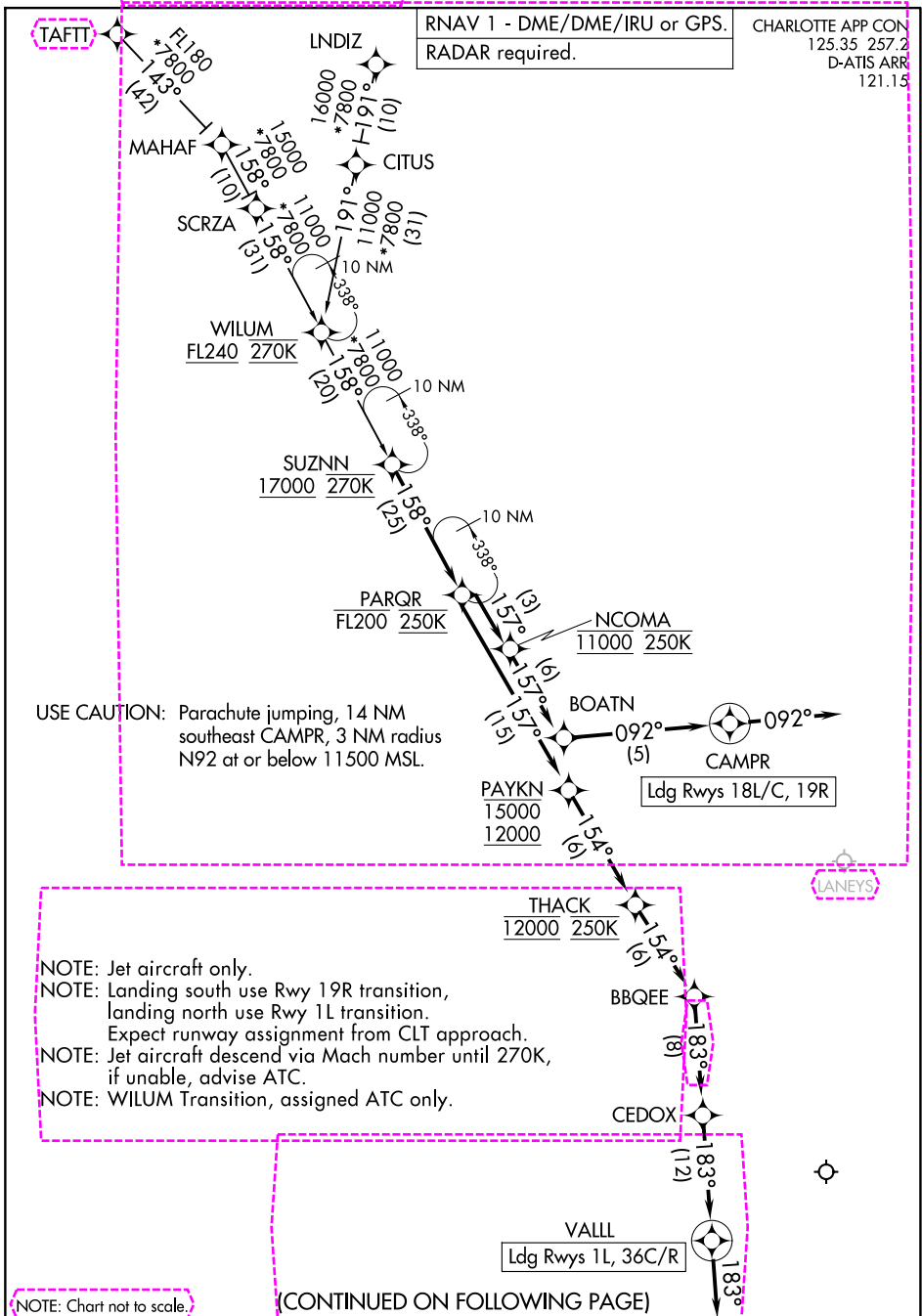
SE-2, 16 APR 2026 to 14 MAY 2026

(SUZNN.PARQR5) 26134

AL-78 (FAA)

CHARLOTTE/DOUGLAS INTL (CLT)
CHARLOTTE, NORTH CAROLINA

PARQR FIVE ARRIVAL (RNAV)



SE-2, 14 MAY 2026 to 11 JUN 2026

SE-2, 14 MAY 2026 to 11 JUN 2026

PARQR FIVE ARRIVAL (RNAV)

(SUZNN.PARQR5) 14MAY26

CHARLOTTE, NORTH CAROLINA
CHARLOTTE/DOUGLAS INTL (CLT)

PARQR FIVE ARRIVAL (RNAV)

ARRIVAL ROUTE DESCRIPTION

LNDIZ TRANSITION (LNDIZ.PARQR5)
TAFTT TRANSITION (TAFTT.PARQR5)
WILUM TRANSITION (WILUM.PARQR5)

From SUZNN on track 158° to cross PARQR at or below FL200 and at 250K.

LANDING RUNWAYS 1L, 36C/R: From PARQR on track 157° to cross PAYKN between 12000 and 15000, then on track 154° to cross THACK at 12000 and at 250K, then on track 154° to BBQEE, then on track 183° to CEDOX, then on track 183° to VALL, then on track 183°. Expect RADAR vectors to final approach course.

LANDING RUNWAYS 18L/C, 19R: From PARQR on track 157° to cross NCOMA at 11000 and at 250K, then on track 157° to BOATN, then on track 092° to CAMPR, then on track 092°. Expect RADAR vectors to final approach course.

SE-2, 14 MAY 2026 to 11 JUN 2026

SE-2, 14 MAY 2026 to 11 JUN 2026