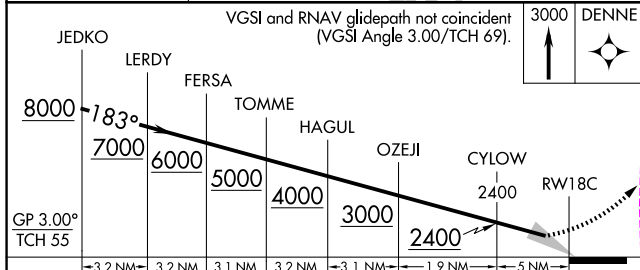
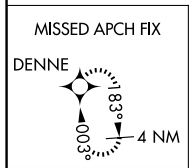
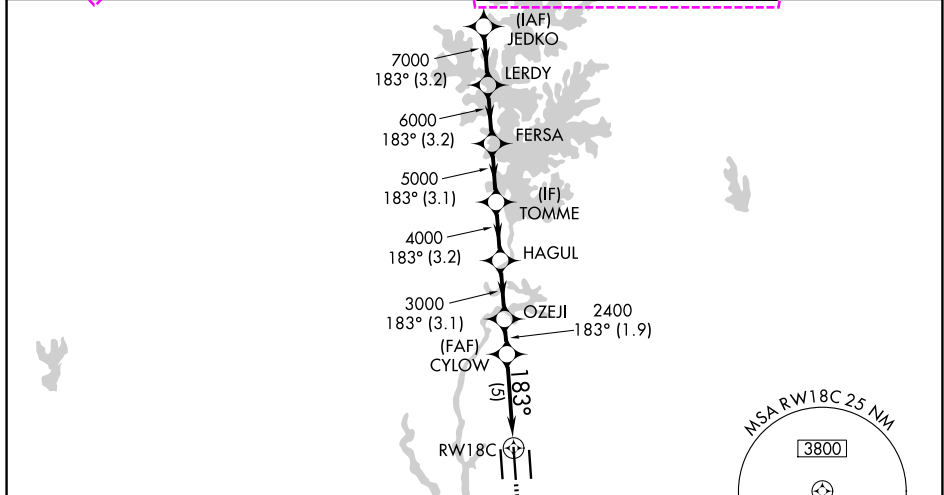


APP CRS Rwy Ldg **10000**
 TDZE **742**
 Apt Elev **748**

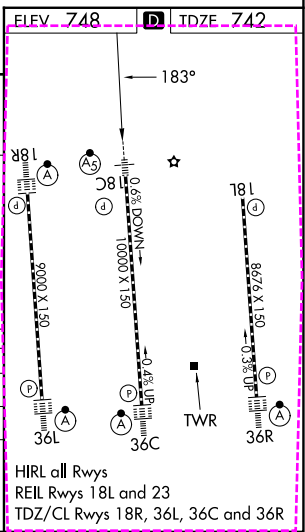
RNAV (RNP) Z RWY 18C

CHARLOTTE/DOUGLAS INTL (CLT)

RNP AR APCH.		MALS/R		MISSED APPROACH: Climb to 3000 direct DENNE and hold.	
<p>Simultaneous approach authorized. For uncompensated Baro-VNAV systems, procedure NA below -11°C or above 54°C.</p>					
D-ATIS		CHARLOTTE APP CON		CHARLOTTE TOWER	
121.15	128.325 (001°-119°) 120.05 (120°-295°) 134.75 (296°-360°)	257.2 (180°-359°) 307.8 (360°-179°)	118.1 126.4 133.35	257.8 (Rwys 18L-36R) 257.8 (Rwy 18C-36C) 257.8 (Rwy 18R-36L)	121.8 348.6 (W) 121.9 348.6 (E)



CATEGORY	A	B	C	D
RNP 0.11 DA		1067/26	325 (400-½)	
RNP 0.30 DA		1177/40	435 (500-¾)	



AUTHORIZATION REQUIRED

HIRL all Rwys
 REIL Rwys 18L and 23
 TDZ/CL Rwys 18R, 36L, 36C and 36R

SE-2, 16 APR 2026 to 14 MAY 2026

SE-2, 16 APR 2026 to 14 MAY 2026

CHARLOTTE, NORTH CAROLINA

AL-78 (FAA)

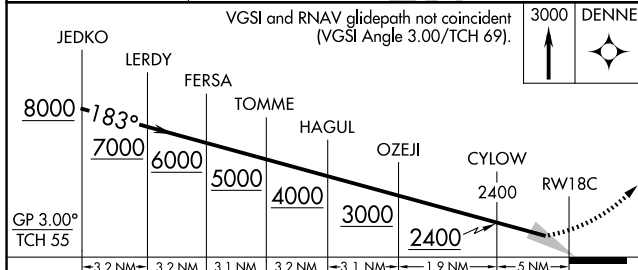
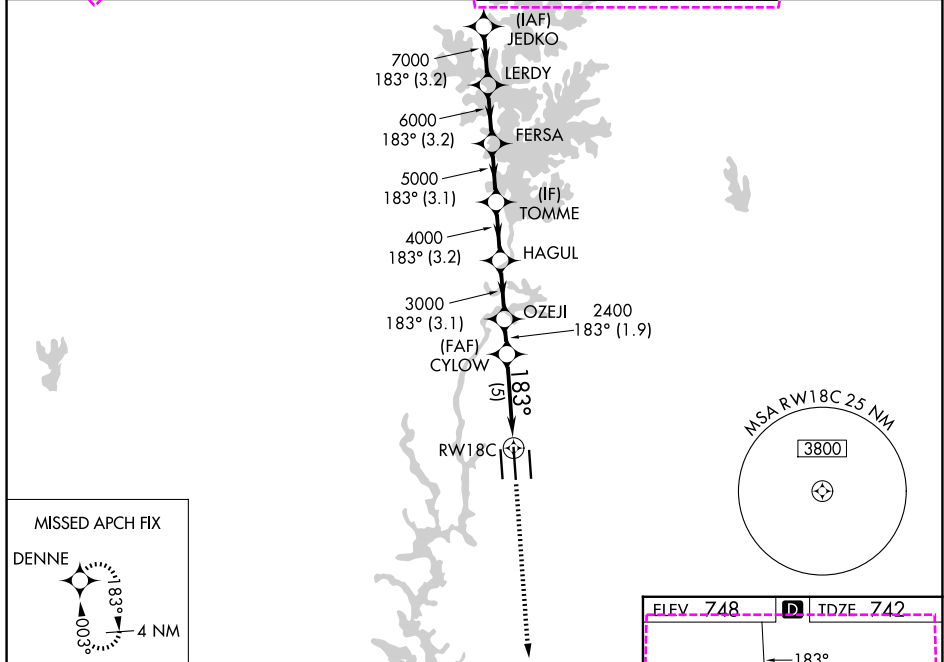
26134

APP CRS	Rwy Ldg 10000
183°	TDZE 742
	Apt Elev 748

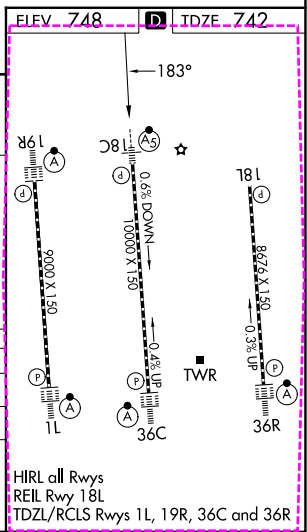
RNAV (RNP) Z RWY 18C

CHARLOTTE/DOUGLAS INTL (CLT)

RNP AR APCH.		MALS R	MISSED APPROACH: Climb to 3000 direct DENNE and hold.	
<p>Simultaneous approach authorized. For uncompensated Baro-VNAV systems, procedure NA below -11°C or above 54°C.</p>				
D-ATIS	CHARLOTTE APP CON	CHARLOTTE TOWER	GND CON	
121.15	128.325 (001°-119°) 257.2 (180°-359°) 120.05 (120°-295°) 307.8 (360°-179°) 134.75 (296°-360°)	118.1 257.8 (18L-36R) 126.4 257.8 (18C-36C) 133.35 257.8 (1L-19R)	121.8 348.6 (W) 121.9 348.6 (E)	



CATEGORY	A	B	C	D
RNP 0.11 DA		1067/26	325 (400-½)	
RNP 0.30 DA		1177/40	435 (500-¾)	



AUTHORIZATION REQUIRED

CHARLOTTE, NORTH CAROLINA
Amdt 1 15AUG19

35°13'N-80°57'W

CHARLOTTE/DOUGLAS INTL (CLT) RNAV (RNP) Z RWY 18C

SE-2, 14 MAY 2026 to 11 JUN 2026

SE-2, 14 MAY 2026 to 11 JUN 2026