

APP CRS	Rwy Ldg	<b>10000</b>
<b>003°</b>	TDZE	<b>707</b>
	Apt Elev	<b>748</b>

# RNAV (RNP) Z RWY 36C

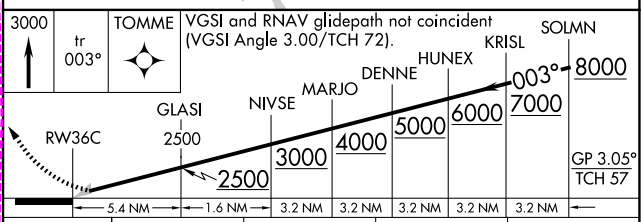
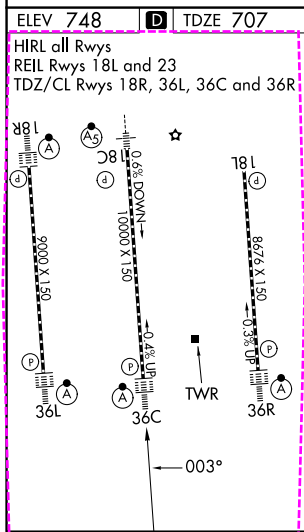
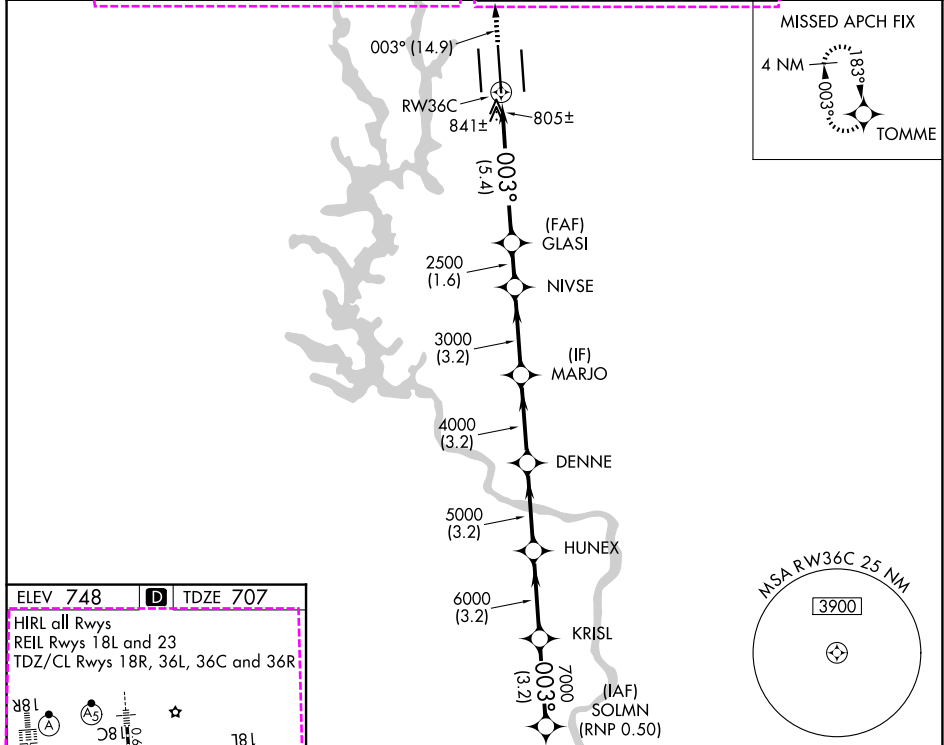
CHARLOTTE/DOUGLAS INTL (CLT)

RNP AR APCH - GPS.

Simultaneous approach authorized. Use of FD or AP required during simultaneous operations. For uncompensated Baro-VNAV systems, procedure NA below -8°C or above 54°C. For inop ALS, increase RNP 0.30 visibility all Cats to 1½ SM.

ALSF-2  
 MISSED APPROACH: Climb to 3000 on track 003° to TOMME and hold.

D-ATIS	CHARLOTTE APP CON		CHARLOTTE TOWER		GND CON	
<b>121.15</b>	<b>128.325</b> (001°-119°)	<b>257.2</b> (180°-359°)	<b>118.1</b>	<b>257.8</b> (Rwys 18L-36R)	<b>121.8</b>	<b>348.6 (W)</b>
	<b>120.05</b> (120°-295°)	<b>307.8</b> (360°-179°)	<b>126.4</b>	<b>257.8</b> (Rwy 18C-36C)	<b>121.9</b>	<b>348.6 (E)</b>
	<b>134.75</b> (296°-360°)		<b>133.35</b>	<b>257.8</b> (Rwy 18R-36L)		



CATEGORY	A	B	C	D
RNP 0.11 DA	1134/40 427 (400-¾)			
RNP 0.30 DA	1180/50 473 (500-1)			

**AUTHORIZATION REQUIRED**

SE-2, 16 APR 2026 to 14 MAY 2026

SE-2, 16 APR 2026 to 14 MAY 2026

CHARLOTTE, NORTH CAROLINA

AL-78 (FAA)

26134

APP CRS	Rwy Ldg	<b>10000</b>
<b>003°</b>	TDZE	<b>707</b>
	Apt Elev	<b>748</b>

# RNAV (RNP) Z RWY 36C

CHARLOTTE/DOUGLAS INTL (CLT)

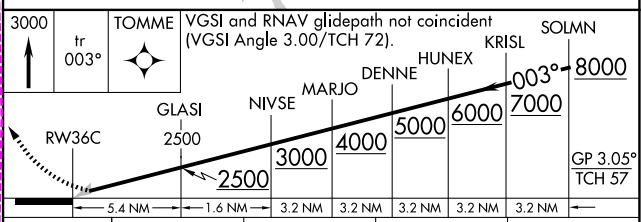
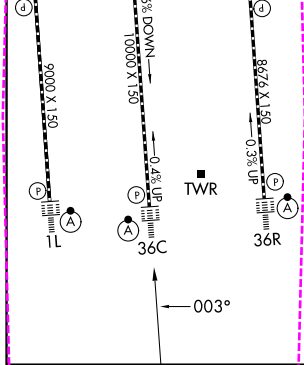
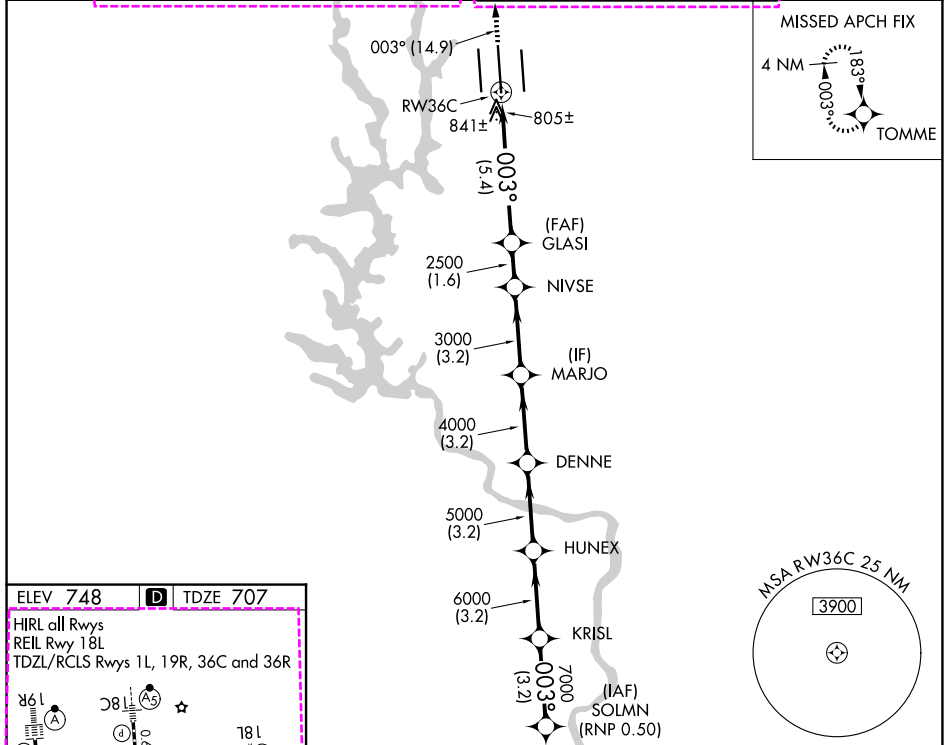
RNP AR APCH - GPS.

Simultaneous approach authorized. Use of FD or AP required during simultaneous operations. For uncompensated Baro-VNAV systems, procedure NA below -8°C or above 54°C. For inop ALS, increase RNP 0.30 visibility all Cats to 1½ SM.



MISSED APPROACH: Climb to 3000 on track 003° to TOMME and hold.

D-ATIS		CHARLOTTE APP CON	CHARLOTTE TOWER	GND CON
<b>121.15</b>	<b>128.325</b> (001°-119°)	<b>257.2</b> (180°-359°)	<b>118.1 257.8</b> (18L-36R)	<b>121.8 348.6</b> (W)
	<b>120.05</b> (120°-295°)	<b>307.8</b> (360°-179°)	<b>126.4 257.8</b> (18C-36C)	<b>121.9 348.6</b> (E)
	<b>134.75</b> (296°-360°)		<b>133.35 257.8</b> (1L-19R)	



**AUTHORIZATION REQUIRED**

CHARLOTTE, NORTH CAROLINA  
Orig-G 03NOV22

35°13'N-80°57'W  
CHARLOTTE/DOUGLAS INTL (CLT)  
**RNAV (RNP) Z RWY 36C**

SE-2, 14 MAY 2026 to 11 JUN 2026

SE-2, 14 MAY 2026 to 11 JUN 2026