


WAAS CH 81800 W18B	APP CRS 183°	Rwy Ldg 10000 TDZE 742 Apt Elev 748
---------------------------------	------------------------	--

RNAV (GPS) Y RWY 18C

CHARLOTTE/DOUGLAS INTL (CLT)

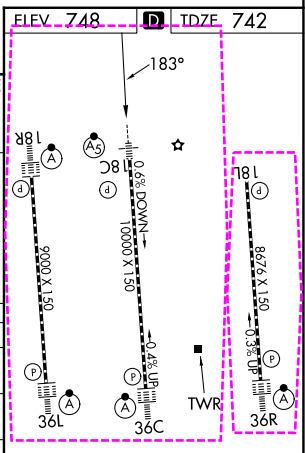
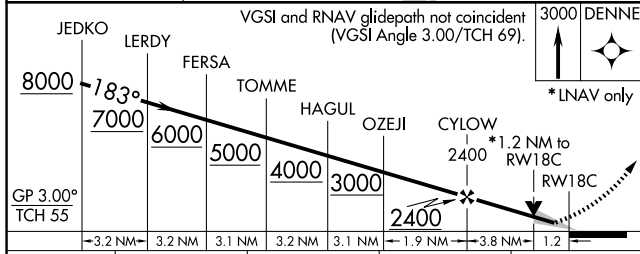
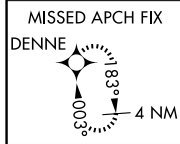
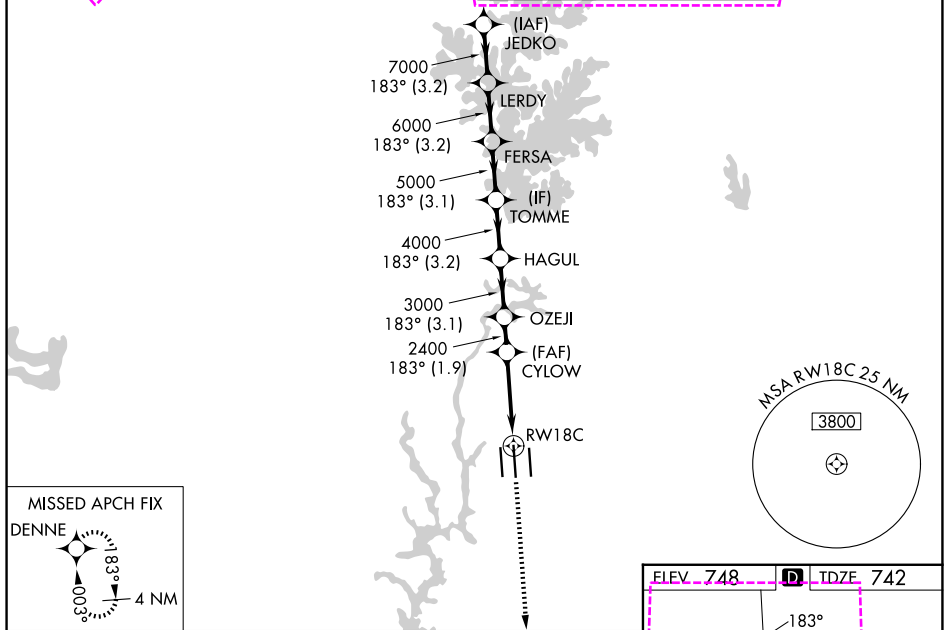
RNP APCH.

⚠ Circling NA at night. Simultaneous approach authorized. LNAV procedure NA during simultaneous operations. Use of FD or AP required during simultaneous operations. For uncompensated Baro-VNAV systems, LNAV/VNAV NA below -11°C or above 54°C.
** RVR 1800 authorized with use of FD or AP or HUD to DA.

MALSR 

MISSED APPROACH: Climb to 3000 direct DENNE and hold.

D-ATIS 121.15	CHARLOTTE APP CON 128.325 (001°-119°) 120.05 (120°-295°) 134.75 (296°-360°)	CHARLOTTE TOWER 118.1 257.8 (Rwys 18L-36R) 126.4 257.8 (Rwy 18C-36C) 133.35 257.8 (Rwy 18R-36L)	GND CON 121.8 348.6 (W) 121.9 348.6 (E)
-------------------------	---	--	---



CATEGORY	A	B	C	D
LPV DA **	942/24		200 (200-½)	
LNAV/VNAV DA	1070/26		328 (400-½)	
LNAV MDA	1200/24	458 (500-½)	1200/45	458 (500-¾)
CIRCLING	1380-1	632 (700-1)	1500-2¼ 752 (800-2¼)	1500-2½ 752 (800-2½)

HIRL all Rwys
REIL Rwys 18L and 23
TDZ/CL Rwys 18R, 36L, 36C and 36R

SE-2, 16 APR 2026 to 14 MAY 2026

SE-2, 16 APR 2026 to 14 MAY 2026

CHARLOTTE, NORTH CAROLINA

AL-78 (FAA)

26134

WAAS CH 81800 W18B	APP CRS 183°	Rwy Ldg 10000 TDZE 742 Apt Elev 748
--	------------------------	--

RNAV (GPS) Y RWY 18C

CHARLOTTE/DOUGLAS INTL (CLT)

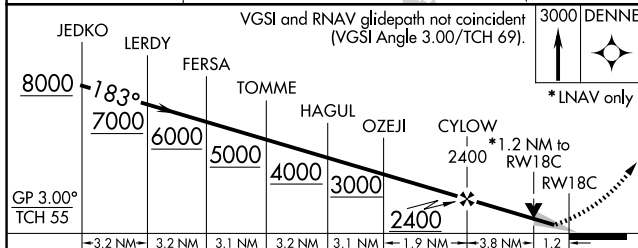
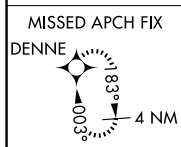
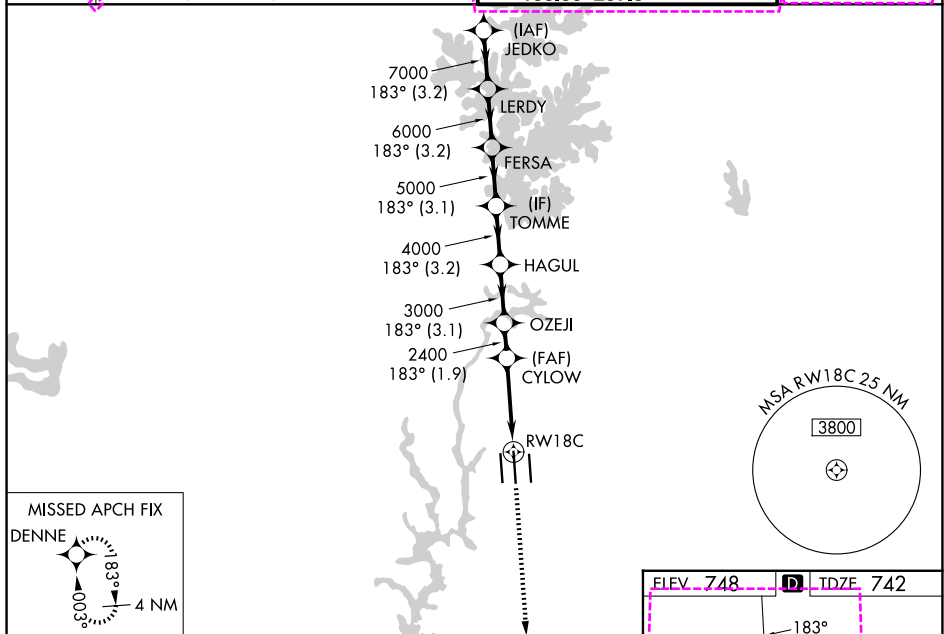
RNP APCH.

T Circling NA at night. Simultaneous approach authorized. LNAV procedure NA during simultaneous operations. Use of FD or AP required during simultaneous operations. For uncompensated Baro-VNAV systems, LNAV/VNAV NA below -11°C or above 54°C.
A ** RVR 1800 authorized with use of FD or AP or HUD to DA.

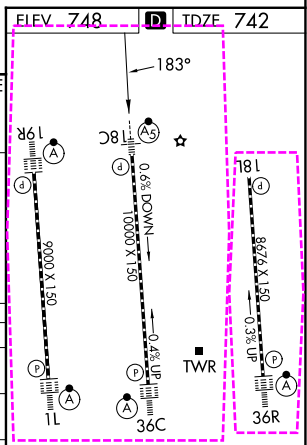


MISSED APPROACH:
Climb to 3000 direct DENNE and hold.

D-ATIS 121.15	CHARLOTTE APP CON		CHARLOTTE TOWER		GND CON
	128.325 (001°-119°)	257.2 (180°-359°)	118.1 (18L-36R)	257.8 (18C-36C)	121.8 348.6 (W)
	120.05 (120°-295°)	307.8 (360°-179°)	126.4 (18C-36C)	257.8 (1L-19R)	121.9 348.6 (E)



CATEGORY	A	B	C	D
LPV DA **		942/24	200 (200-½)	
LNAV/VNAV DA		1070/26	328 (400-½)	
LNAV MDA	1200/24	458 (500-½)	1200/45	458 (500-¾)
CIRCLING	1380-1	632 (700-1)	1500-2¼ 752 (800-2¼)	1500-2½ 752 (800-2½)



HIRL all Rwws
REIL Rwy 18L
TDZL/RCLS Rwws 1L, 19R, 36C and 36R

SE-2, 14 MAY 2026 to 11 JUN 2026

SE-2, 14 MAY 2026 to 11 JUN 2026

CHARLOTTE, NORTH CAROLINA
Amdt 4 15AUG19

35°13'N-80°57'W

CHARLOTTE/DOUGLAS INTL (CLT) RNAV (GPS) Y RWY 18C