

CHARLOTTE, NORTH CAROLINA

AL-78 (FAA)

25275

WAAS CH 77500 W18A	APP CRS 183°	Rwy Ldg TDZE Apt Elev	8676 748 748
--	------------------------	-----------------------------	---

RNAV (GPS) Y RWY 18L

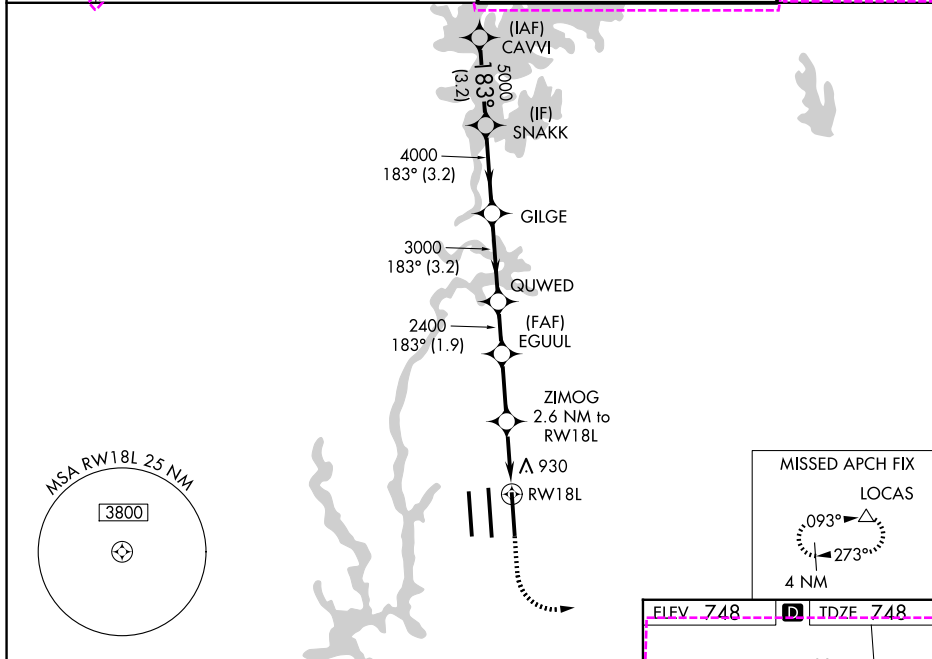
CHARLOTTE/DOUGLAS INTL (CLT)

RNP APCH.

- ∇** Circling NA at night. Simultaneous approach authorized. LNAV procedure NA during simultaneous operations. Use of FD or AP required during simultaneous operations.
- ⚠** Rwy 18L helicopter visibility reduction below RVR 4000 NA. For uncompensated Baro-VNAV systems, LNAV/VNAV NA below -11°C or above 54°C.

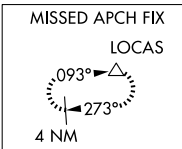
MISSED APPROACH: Climb to 1300 then climbing left turn to 4000 direct LOCAS and hold.

D-ATIS	CHARLOTTE APP CON	CHARLOTTE TOWER	GND CON
121.15	128.325 (001°-119°) 120.05 (120°-295°) 134.75 (296°-360°)	118.1 257.8 (Rwys 18L-36R) 126.4 257.8 (Rwy 18C-36C) 133.35 257.8 (Rwy 18R-36L)	121.8 348.6 (W) 121.9 348.6 (E)



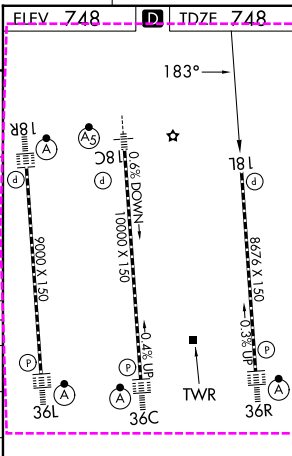
SE-2, 16 APR 2026 to 14 MAY 2026

SE-2, 16 APR 2026 to 14 MAY 2026



VGSI and RNAV glidepath not coincident (VGSI Angle 3.00/TCH 76).

CAVVI	SNAKK	GILGE	QUWED	EGUUL	ZIMOG	RWY 18L
6000	5000	4000	3000	2400	2400	1620
GP 3.00° TCH 56						
	3.2 NM	3.2 NM	3.2 NM	1.9 NM	2.4 NM	1.5 NM
	A		B		C	D
LPV DA	1002/40		254 (300-¾)			
LNAV/VNAV DA	1216-1⅜		468 (500-1⅝)			
LNAV MDA	1180/55	432 (500-1)	1180-1¼		432 (500-1¼)	
CIRCLING	1380-1	632 (700-1)	1500-2¼		752 (800-2¼)	1500-2½
			752 (800-2¼)			



HIRL all Rwys
REIL Rwys 18L and 23
TDZ/CL Rwys 18R, 36L, 36C and 36R

CHARLOTTE, NORTH CAROLINA
Amdt 5 15AUG19

35°13'N-80°57'W

RNAV (GPS) Y RWY 18L

CHARLOTTE, NORTH CAROLINA

AL-78 (FAA)

26134

WAAS CH 77500 W18A	APP CRS 183°	Rwy Ldg TDZE Apt Elev 8676 748 748
--	------------------------	--

RNAV (GPS) Y RWY 18L

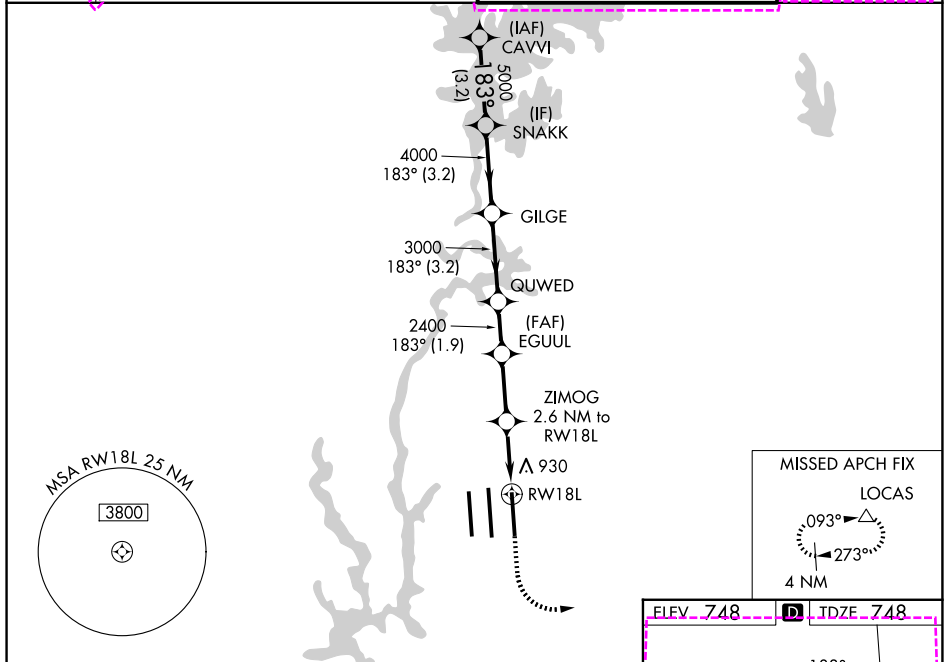
CHARLOTTE/DOUGLAS INTL (CLT)

RNP APCH.

- ▼** Circling NA at night. Simultaneous approach authorized. LNAV procedure NA during simultaneous operations. Use of FD or AP required during simultaneous operations.
- ▲** Rwy 18L helicopter visibility reduction below RVR 4000 NA. For uncompensated Baro-VNAV systems, LNAV/VNAV NA below -11°C or above 54°C.

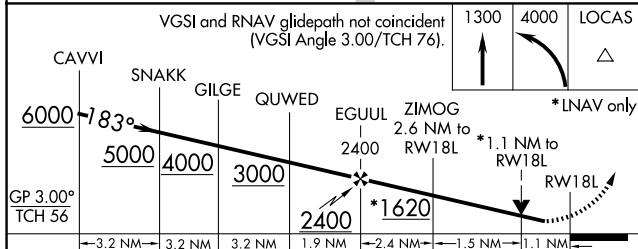
MISSED APPROACH: Climb to 1300 then climbing left turn to 4000 direct LOCAS and hold.

D-ATIS	CHARLOTTE APP CON		CHARLOTTE TOWER		GND CON	
121.15	128.325 (001°-119°)	257.2 (180°-359°)	118.1 (18L-36R)	257.8 (18C-36C)	121.8 348.6 (W)	121.9 348.6 (E)
	120.05 (120°-295°)	307.8 (360°-179°)	126.4 257.8 (18C-36C)	133.35 257.8 (1L-19R)		
	134.75 (296°-360°)					

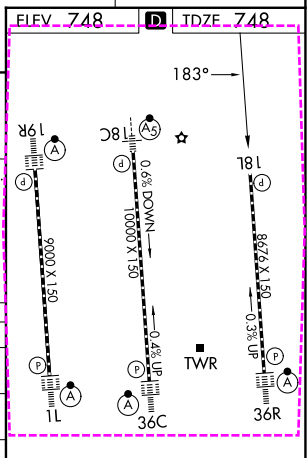


SE-2, 14 MAY 2026 to 11 JUN 2026

SE-2, 14 MAY 2026 to 11 JUN 2026



CATEGORY	A	B	C	D
LPV DA		1002/40	254 (300-¾)	
LNAV/VNAV DA		1216-1⅜	468 (500-1⅝)	
LNAV MDA	1180/55	432 (500-1)	1180-1¼	432 (500-1¼)
CIRCLING	1380-1	632 (700-1)	1500-2¼	1500-2½



HIRL all Rwys
REIL Rwy 18L
TDZL/RCLS Rwys 1L, 19R, 36C and 36R

CHARLOTTE, NORTH CAROLINA
Amdt 5 15AUG19

35°13'N-80°57'W

CHARLOTTE/DOUGLAS INTL (CLT) RNAV (GPS) Y RWY 18L