


WAAS CH 56515 W36A	APP CRS 003°	Rwy Ldg TDZE 744 Apt Elev 748	9000 744 748
--	------------------------	---	---

RNAV (GPS) Y RWY 36L

CHARLOTTE/DOUGLAS INTL (CLT)

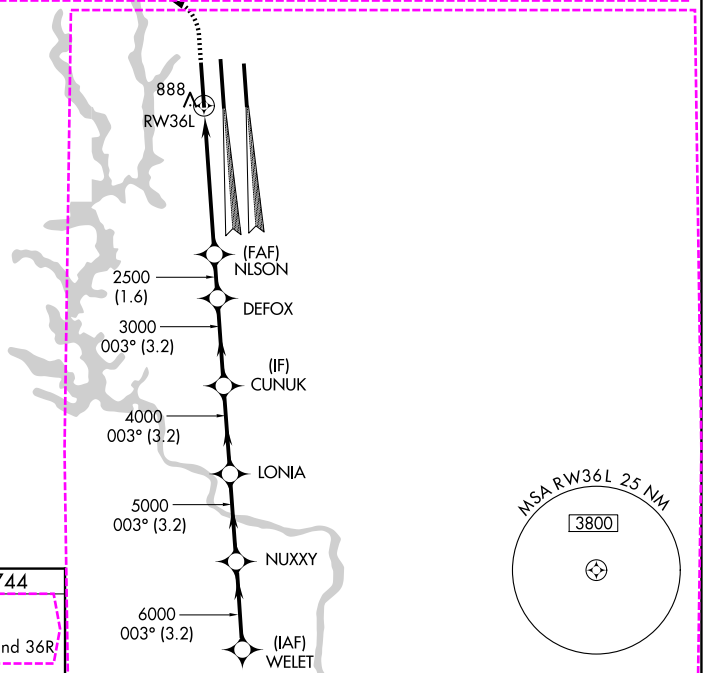
RADAR required for procedure entry. RNP APCH.

⚠ Circling NA at night. Simultaneous approach authorized. LNAV procedure NA during simultaneous operations. Use of FD or AP required during simultaneous operations. For inop ALS, increase LNAV/VNAV all Cats visibility to RVR 4500 and increase LNAV Cats C/D visibility to RVR 6000. For uncompensated Baro-VNAV systems, LNAV/VNAV NA below -10°C or above 54°C.

ALS-F-2 

MISSED APPROACH: Climb to 1200 then climbing left turn to 4000 direct BUDKE and hold.

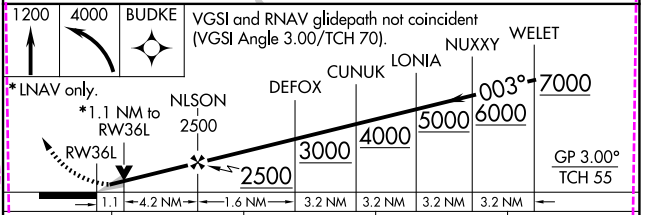
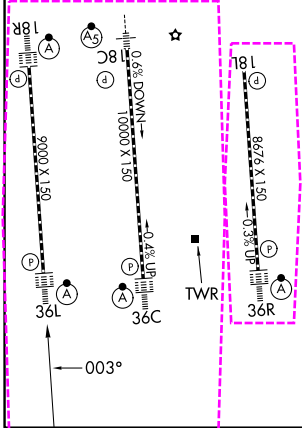
D-ATIS	CHARLOTTE APP CON		CHARLOTTE TOWER		GND CON
121.15	128.325 (001°-119°) 120.05 (120°-295°) 134.75 (296°-360°)	257.2 (180°-359°) 307.8 (360°-179°)	118.1 (Rwys 18L-36R) 126.4 (Rwy 18C-36C) 133.35 (Rwy 18R-36L)	257.8 (Rwys 18L-36R) 257.8 (Rwy 18C-36C) 257.8 (Rwy 18R-36L)	121.8 348.6 (W) 121.9 348.6 (E)



SE-2, 16 APR 2026 to 14 MAY 2026

SE-2, 16 APR 2026 to 14 MAY 2026

ELEV 748	D	TDZE 744
HIRL all Rwys		
REIL Rwys 18L and 23		
TDZ/CL Rwys 18R, 36L, 36C and 36R		



CATEGORY	A	B	C	D
LPV DA		944/18	200 (200-½)	
LNAV/VNAV DA		1049/24	305 (400-½)	
LNAV MDA	1140/24	396 (400-½)	1140/35	396 (400-¾)
CIRCLING	1380-1	632 (700-1)	1500-2¼ 752 (800-2¼)	1500-2½ 752 (800-2½)

WAAS CH 56515 W01A	APP CRS 003°	Rwy Ldg TDZE Apt Elev	9000 744 748
--	------------------------	-----------------------------	---

RNAV (GPS) Y RWY 1L

CHARLOTTE/DOUGLAS INTL (CLT)

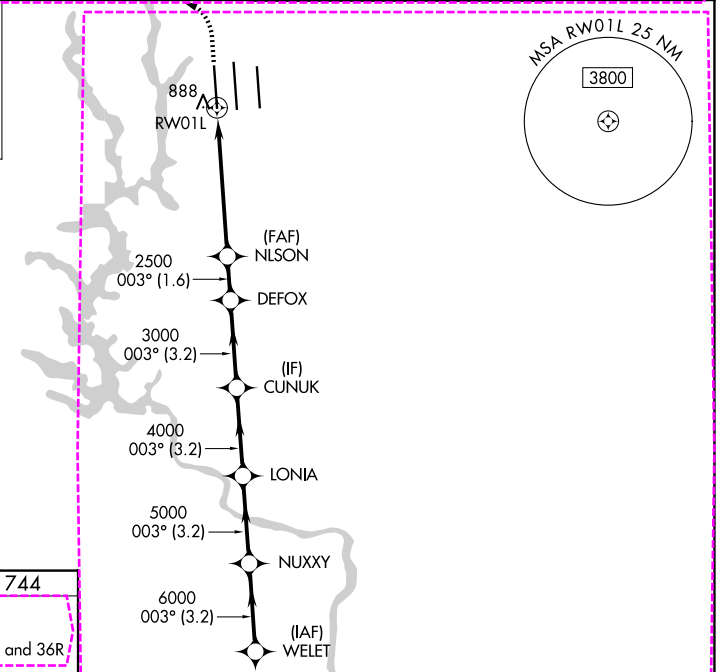
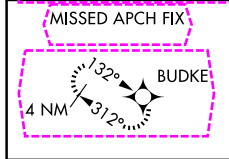
RNP APCH - GPS.

ALSIF-2

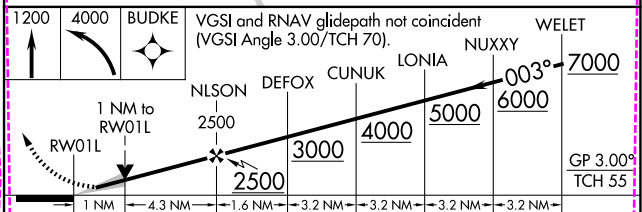
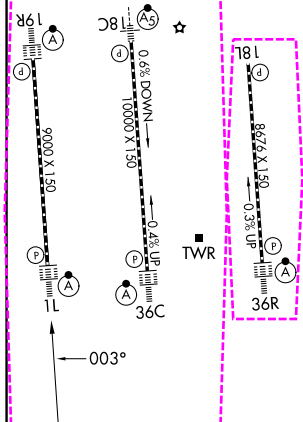
MISSED APPROACH: Climb to 1200 then climbing left turn to 4000 direct BUDKE and hold.

Simultaneous approach authorized. LNAV procedure NA during simultaneous operations. Use of FD or AP required during simultaneous operations. Circling NA at night. For uncompensated Baro-VNAV systems, LNAV/VNAV NA below -7°C or above 54°C. For inop ALS, increase LNAV/VNAV all Cats visibility to RVR 4500.

D-ATIS	CHARLOTTE APP CON		CHARLOTTE TOWER		GND CON
121.15	128.325 (001°-119°) 120.05 (120°-295°) 134.75 (296°-360°)	257.2 (180°-359°) 307.8 (360°-179°)	118.1 (18L-36R) 126.4 (18C-36C) 133.35 (1L-19R)	257.8 (18L-36R) 257.8 (18C-36C) 257.8 (1L-19R)	121.8 348.6 (W) 121.9 348.6 (E)



ELEV 748	D	TDZE 744
HIRL all Rwys REIL Rwy 18L TDZL/RCLS Rwys 1L, 19R, 36C and 36R		



CATEGORY	A	B	C	D
LPV DA		944/18	200 (200-½)	
LNAV/VNAV DA		1049/24	305 (400-½)	
LNAV MDA	1140/24	396 (400-½)	1140/35	396 (400-¾)
CIRCLING	1380-1	632 (700-1)	1380-2¼ 632 (700-2¼)	1500-2½ 752 (800-2½)

SE-2, 14 MAY 2026 to 11 JUN 2026

SE-2, 14 MAY 2026 to 11 JUN 2026