

WAAS CH <b>86200</b> <b>W36B</b>	APP CRS <b>003°</b>	Rwy Ldg <b>10000</b> TDZE <b>707</b> Apt Elev <b>748</b>
--	------------------------	--

# RNAV (GPS) Y RWY 36C

CHARLOTTE/DOUGLAS INTL (CLT)

RNP APCH.

**⚠** Circling NA at night. Simultaneous approach authorized. Use of FD or AP required during simultaneous operations. For uncompensated Baro-VNAV systems, LNAV/VNAV NA below -11°C or above 54°C. LNAV procedure NA during simultaneous operations.



MISSED APPROACH:  
Climb to 3000 direct  
TOMME and hold.

**D-ATIS**

**121.15**

CHARLOTTE APP CON

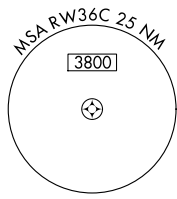
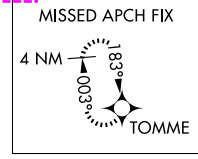
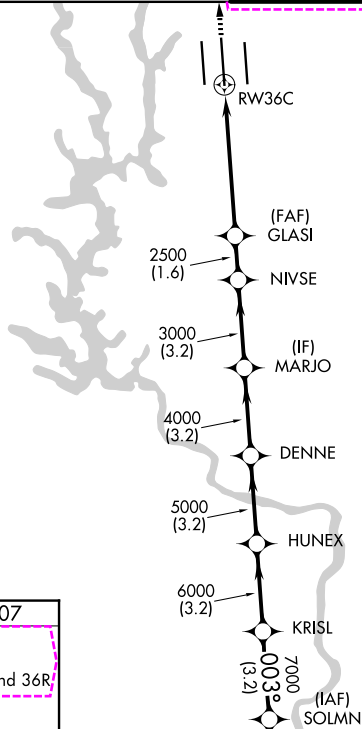
<b>128.325</b> (001°-119°)	<b>257.2</b> (180°-359°)
<b>120.05</b> (120°-295°)	<b>307.8</b> (360°-179°)
<b>134.75</b> (296°-360°)	

CHARLOTTE TOWER

<b>118.1</b>	<b>257.8</b> (Rwys 18L-36R)
<b>126.4</b>	<b>257.8</b> (Rwy 18C-36C)
<b>133.35</b>	<b>257.8</b> (Rwy 18R-36L)

GND CON

<b>121.8</b>	<b>348.6</b> (W)
<b>121.9</b>	<b>348.6</b> (E)

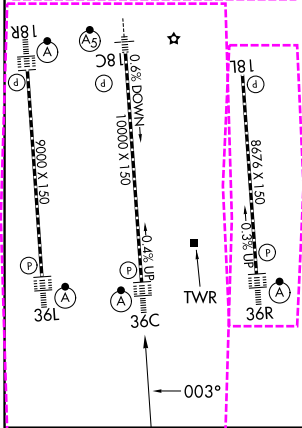


SE-2, 16 APR 2026 to 14 MAY 2026

SE-2, 16 APR 2026 to 14 MAY 2026

ELEV 748 **D** TDZE 707

HIRL all Rwys  
REIL Rwys 18L and 23  
TDZ/CL Rwys 18R, 36L, 36C and 36R



3000	TOMME	VGSI and RNAV glidepath not coincident (VGSI Angle 3.00/TCH 72).				SOLMN
	GLASI	NIVSE	MARJO	DENNE	HUNEX	KRISL
	2500	3000	4000	5000	6000	7000
	1.7	3.7 NM	1.6 NM	3.2 NM	3.2 NM	3.2 NM
CATEGORY	A	B	C	D		
LPV DA	907/18		200 (200-1/2)			
LNAV/VNAV DA	1229-1 3/8		522 (500-1 3/8)			
LNAV MDA	1320/40	613 (600-3/4)	1320-1 3/8	613 (600-1 3/8)		
CIRCLING	1380-1	632 (700-1)	1500-2 1/4 752 (800-2 1/4)	1500-2 1/2 752 (800-2 1/2)		

CHARLOTTE, NORTH CAROLINA

AL-78 (FAA)

26134

WAAS CH <b>86200</b> <b>W36B</b>	APP CRS <b>003°</b>	Rwy Ldg <b>10000</b> TDZE <b>707</b> Apt Elev <b>748</b>
--	------------------------	--

# RNAV (GPS) Y RWY 36C

CHARLOTTE/DOUGLAS INTL (CLT)

RNP APCH.

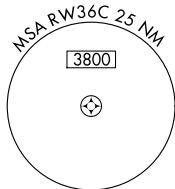
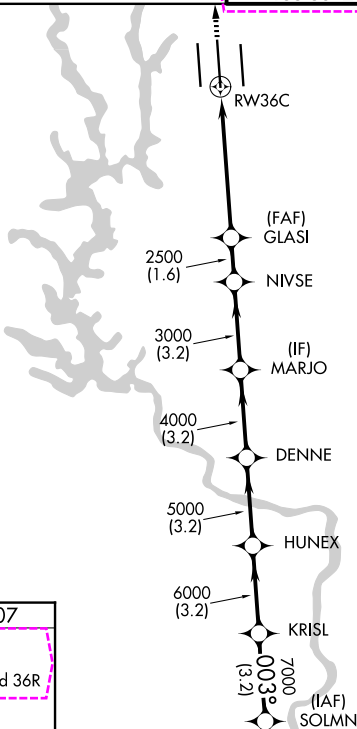
**⚠** Circling NA at night. Simultaneous approach authorized. Use of FD or AP required during simultaneous operations. For uncompensated Baro-VNAV systems, LNAV/VNAV NA below -11°C or above 54°C. LNAV procedure NA during simultaneous operations.



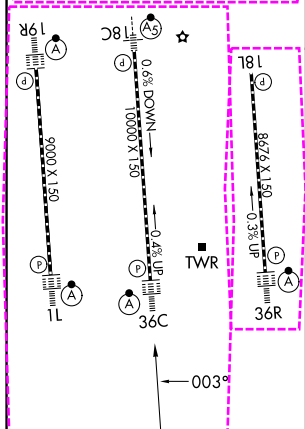
MISSED APPROACH:  
Climb to 3000 direct  
TOMME and hold.

D-ATIS <b>121.15</b>	CHARLOTTE APP CON			CHARLOTTE TOWER		GND CON
	<b>128.325</b> (001°-119°)	<b>257.2</b> (180°-359°)	<b>118.1</b> <b>257.8</b> (18L-36R)	<b>121.8</b> <b>348.6</b> (W)		
	<b>120.05</b> (120°-295°)	<b>307.8</b> (360°-179°)	<b>126.4</b> <b>257.8</b> (18C-36C)	<b>121.9</b> <b>348.6</b> (E)		
	<b>134.75</b> (296°-360°)		<b>133.35</b> <b>257.8</b> (1L-19R)			

MISSED APCH FIX



ELEV 748	<b>D</b>	TDZE 707
HIRL all Rwys REIL Rwy 18L TDZL/RCLS Rwys 1L, 19R, 36C and 36R		



3000	TOMME	VGSI and RNAV glidepath not coincident (VGSI Angle 3.00/TCH 72).					SOLMN	8000
		GLASI	NIVSE	MARJO	DENNE	HUNEX	KRISL	003°
		2500	3000	4000	5000	6000	7000	
		1.7	3.7 NM	1.6 NM	3.2 NM	3.2 NM	3.2 NM	3.2 NM
								GP 3.00° TCH 57
CATEGORY	A	B		C		D		
LPV DA	DA	907/18		200 (200-1/2)				
LNAV/VNAV DA	DA	1229-1 3/8		522 (500-1 3/8)				
LNAV MDA	1320/40	613 (600-3/4)		1320-1 3/8		613 (600-1 3/8)		
CIRCLING	1380-1	632 (700-1)		1500-2 1/4 752 (800-2 1/4)		1500-2 1/2 752 (800-2 1/2)		

CHARLOTTE, NORTH CAROLINA  
Amdt 3F 02JAN20

35°13'N-80°57'W

# RNAV (GPS) Y RWY 36C

SE-2, 14 MAY 2026 to 11 JUN 2026

SE-2, 14 MAY 2026 to 11 JUN 2026