

CHARLOTTE, NORTH CAROLINA

AL-78 (FAA)

25275

WAAS CH 90100 W36D	APP CRS 003°	Rwy Ldg TDZE 727 Apt Elev 748
--	------------------------	---

RNAV (GPS) Y RWY 36R

CHARLOTTE/DOUGLAS INTL (CLT)

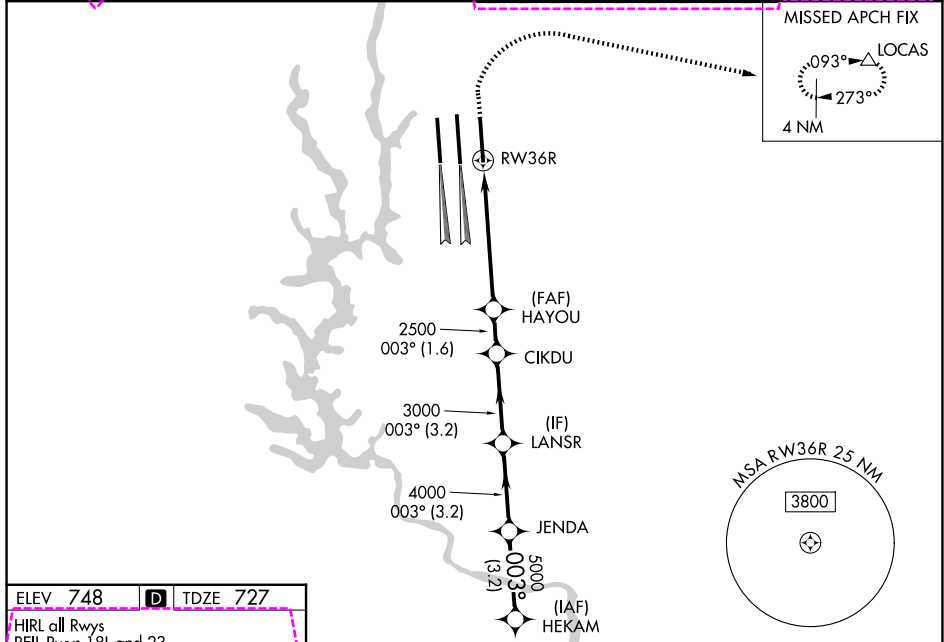
RNP APCH.

⚠ Circling NA at night. For uncompensated Baro-VNAV systems, LNAV/VNAV NA below -11°C or above 54°C. Simultaneous approach authorized. Use of FD or AP required during simultaneous operations. LNAV procedure NA during simultaneous operations. For inop ALSF, increase LNAV/VNAV all Cats visibility to 1½ mile.

ALSF-2

MISSED APPROACH: Climb to 1320 then climbing right turn to 4000 direct LOCAS and hold.

D-ATIS 121.15	CHARLOTTE APP CON		CHARLOTTE TOWER		GND CON
	128.325 (001°-119°)	257.2 (180°-359°)	118.1 257.8 (Rwys 18L-36R)		121.8 348.6 (W)
	120.05 (120°-295°)	307.8 (360°-179°)	126.4 257.8 (Rwy 18C-36C)		121.9 348.6 (E)
	134.75 (296°-360°)		133.35 257.8 (Rwy 18R-36L)		



SE-2, 16 APR 2026 to 14 MAY 2026

SE-2, 16 APR 2026 to 14 MAY 2026

ELEV 748 **D** **TDZE 727**

HIRL all Rwys
REIL Rwys 18L and 23
TDZ/CL Rwys 18R, 36L, 36C and 36R

1320	4000	LOCAS	VGSi and RNAV glidepath not coincident (VGSi Angle 3.00/TCH 74).		HEKAM
*LNAV only.		RWY 36R		JENDA	HEKAM
*1.6 NM to RWY 36R		HAYOU 2500		JENDA 5000	HEKAM 6000
1.6		3.8 NM		1.6 NM	3.2 NM
1.6		3.2 NM		3.2 NM	3.2 NM
CATEGORY	A	B	C	D	
LPV DA	927/18		200 (200-½)		
LNAV/VNAV DA	1229-1¼		502 (500-1¼)		
LNAV MDA	1320/24	593 (600-½)	1320-1¼	593 (600-1¼)	
CIRCLING	1380-1	632 (700-1)	1500-2¼ 752 (800-2¼)	1500-2½ 752 (800-2½)	

CHARLOTTE, NORTH CAROLINA
Amdt 4C 15AUG19

35°13'N-80°57'W

CHARLOTTE/DOUGLAS INTL (CLT)
RNAV (GPS) Y RWY 36R

CHARLOTTE, NORTH CAROLINA

AL-78 (FAA)

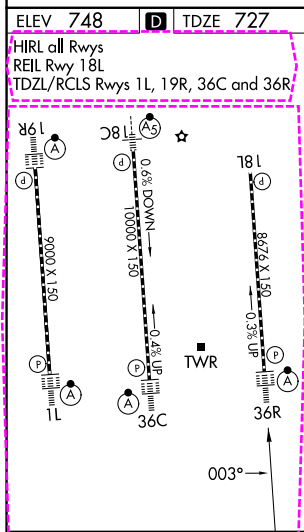
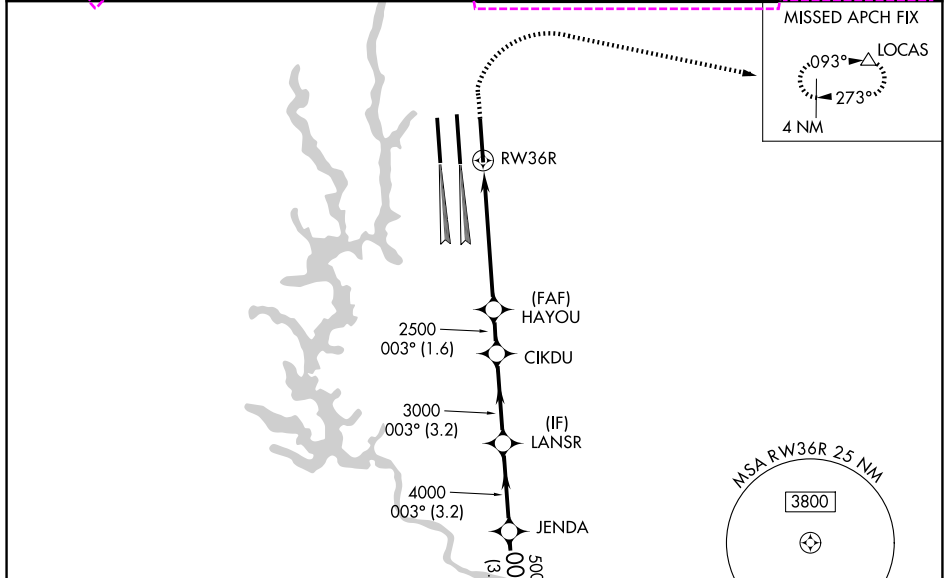
26134

WAAS CH 90100 W36D	APP CRS 003°	Rwy Ldg TDZE 727 Apt Elev 748
--	------------------------	---

RNAV (GPS) Y RWY 36R

CHARLOTTE/DOUGLAS INTL (CLT)

RNP APCH.		ALSF-2 	MISSED APPROACH: Climb to 1320 then climbing right turn to 4000 direct LOCAS and hold.
<p>▽ Circling NA at night. For uncompensated Baro-VNAV systems, LNAV/VNAV NA below -11°C or above 54°C. Simultaneous approach authorized. Use of FD or AP required during simultaneous operations. LNAV procedure NA during simultaneous operations. For inop ALSF, increase LNAV/VNAV all Cats visibility to 1/2 mile.</p>			
D-ATIS		CHARLOTTE TOWER	GND CON
121.15	CHARLOTTE APP CON 128.325 (001°-119°) 257.2 (180°-359°) 120.05 (120°-295°) 307.8 (360°-179°) 134.75 (296°-360°)	118.1 257.8 (18L-36R) 126.4 257.8 (18C-36C) 133.35 257.8 (1L-19R)	121.8 348.6 (W) 121.9 348.6 (E)



1320	4000	LOCAS	VGSIs and RNAV glidepath not coincident (VGSi Angle 3.00/TCH 74).		HEKAM		
*LNAV only.		RW36R *1.6 NM to RW36R HAYOU 2500 CIKDU 3000 LANSR 4000 JENDA 5000 HEKAM 6000		003°	GP 3.00° TCH 55		
		1.6	3.8 NM	1.6 NM	3.2 NM	3.2 NM	3.2 NM
CATEGORY	A	B	C	D			
LPV DA	927/18		200 (200-1/2)				
LNAV/VNAV DA	1229-1 1/4		502 (500-1 1/4)				
LNAV MDA	1320/24	593 (600-1/2)	1320-1 1/4	593 (600-1 1/4)			
CIRCLING	1380-1	632 (700-1)	1500-2 1/4 752 (800-2 1/4)	1500-2 1/2 752 (800-2 1/2)			

SE-2, 14 MAY 2026 to 11 JUN 2026

SE-2, 14 MAY 2026 to 11 JUN 2026

CHARLOTTE, NORTH CAROLINA
Amdt 4C 15AUG19

35°13'N-80°57'W

CHARLOTTE/DOUGLAS INTL (CLT) RNAV (GPS) Y RWY 36R