

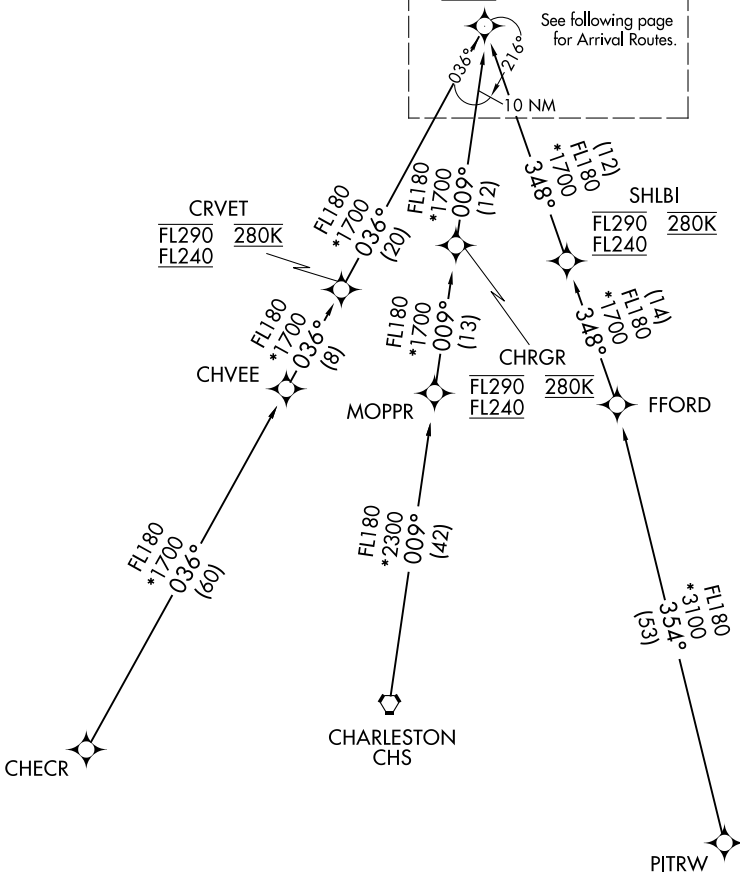
STOCR FOUR ARRIVAL (RNAV) Transition Routes

CHARLOTTE APP CON
126.15 282.325
D-ATIS ARR
121.15

RNAV 1 - DME/DME/IRU OR GPS.
RADAR required.

FLLGG
FL230 280K
FL210

See following page
for Arrival Routes.



SE-2, 16 APR 2026 to 14 MAY 2026

SE-2, 16 APR 2026 to 14 MAY 2026

NOTE: Jet aircraft only.
 NOTE: Landing south use Rwy 18L transition,
 landing north use Rwy 36R transition.
 Expect runway assignment from CLT approach.
 NOTE: Jet aircraft descend via Mach number until 280K,
 if unable, advise ATC.

NOTE: Chart not to scale.

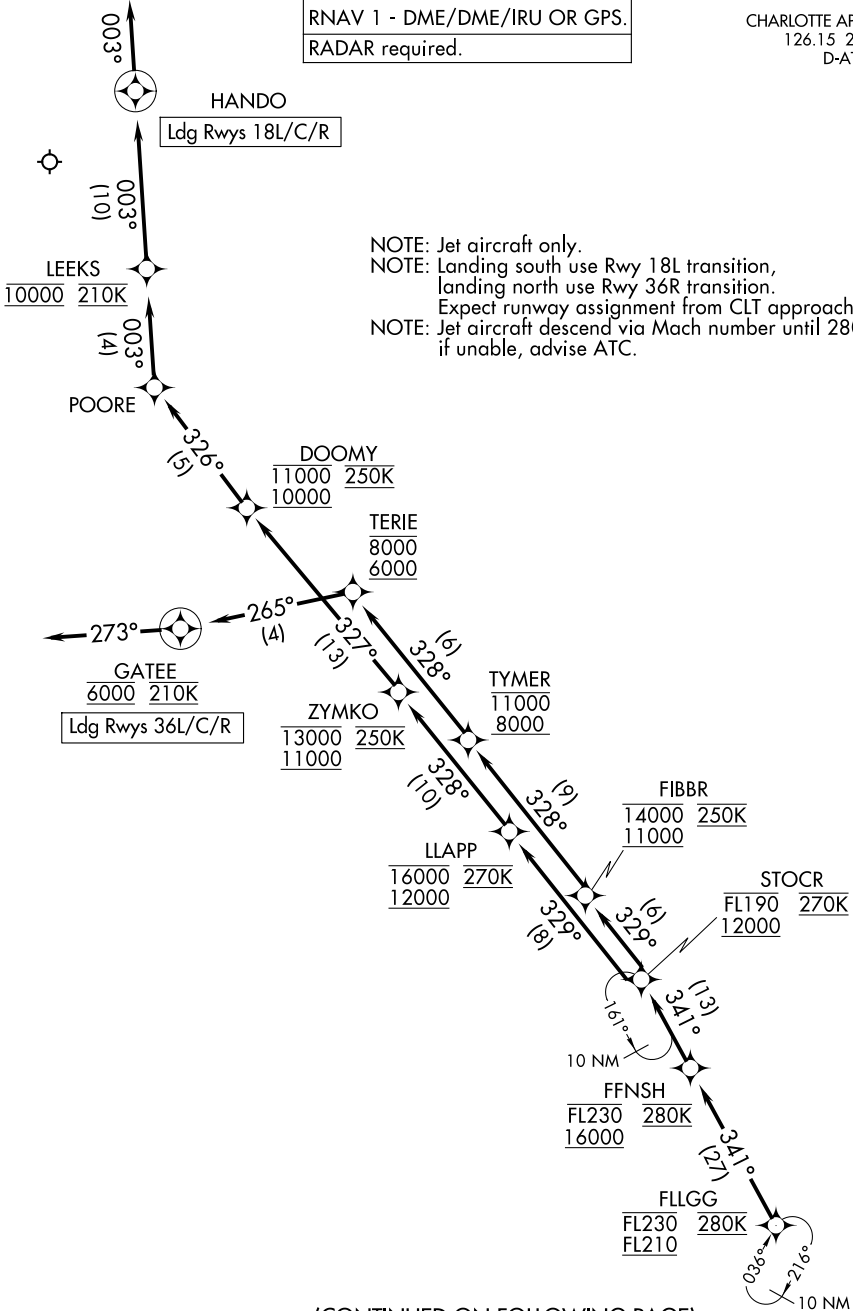
CHARLESTON TRANSITION (CHS.STOCR4)
CHECR TRANSITION (CHECR.STOCR4)
PITRW TRANSITION (PITRW.STOCR4)

(CONTINUED ON FOLLOWING PAGE)

STOCR FOUR ARRIVAL (RNAV) Arrival Routes

RNAV 1 - DME/DME/IRU OR GPS.
RADAR required.

CHARLOTTE APP CON
126.15 282.325
D-ATIS ARR
121.15



SE-2, 16 APR 2026 to 14 MAY 2026

SE-2, 16 APR 2026 to 14 MAY 2026

NOTE: Chart not to scale.

(CONTINUED ON FOLLOWING PAGE)

STOCR FOUR ARRIVAL (RNAV) Arrival Routes

(FLLGG.STOCR4) 24137

AL-78 (FAA)

CHARLOTTE/DOUGLAS INTL (CLT)
CHARLOTTE, NORTH CAROLINA**STOCR FOUR ARRIVAL (RNAV)****ARRIVAL ROUTE DESCRIPTION**

From FLLGG on track 341° to cross FFNSH between 16000 and FL230 and at 280K, then on track 341° to cross STOCR between 12000 and FL190 and at 270K.

LANDING RUNWAYS 18L/C/R: From STOCR on track 329° to cross LLAPP between 12000 and 16000 and at 270K, then on track 328° to cross ZYMKO between 11000 and 13000 and at 250K, then on track 327° to cross DOOMY between 10000 and 11000 and at 250K, then on track 326° to POORE, then on track 003° to cross LEEKS at 10000 and at 210K, then on track 003° to HANDO, then on track 003°. Expect RADAR vectors to final approach course.

LANDING RUNWAYS 36L/C/R: From STOCR on track 329° to cross FIBBR between 11000 and 14000 and at 250K, then on track 328° to cross TYMER between 8000 and 11000, then on track 328° to cross TERIE between 6000 and 8000, then on track 265° to cross GATEE at 6000 and at 210K, then on track 273°. Expect RADAR vectors to final approach course.

SE-2, 16 APR 2026 to 14 MAY 2026

SE-2, 16 APR 2026 to 14 MAY 2026

STOCR FOUR ARRIVAL (RNAV)

(FLLGG.STOCR4) 16MAY24

CHARLOTTE, NORTH CAROLINA
CHARLOTTE/DOUGLAS INTL (CLT)

(FLLGG.STOCR5) 26134

AL-78 (FAA)

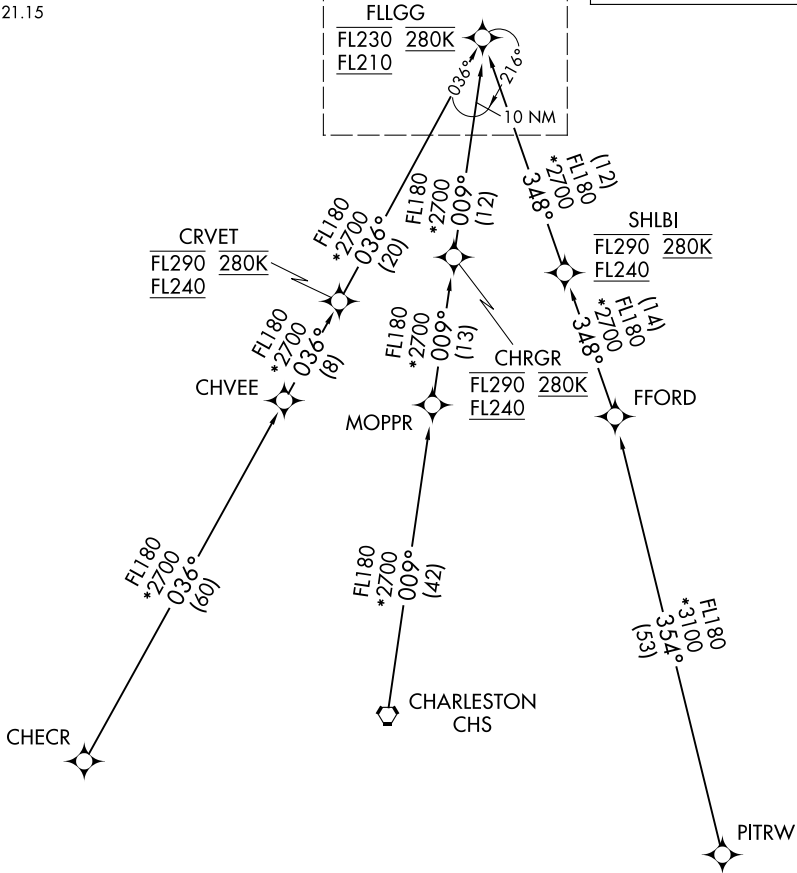
CHARLOTTE/DOUGLAS INTL (CLT)
CHARLOTTE, NORTH CAROLINA

STOCR FIVE ARRIVAL (RNAV) Transition Routes

CHARLOTTE APP CON
126.15 282.325
D-ATIS ARR
121.15

See following page
for arrival routes.

RNAV 1 - DME/DME/IRU or GPS.
RADAR required.



SE-2, 14 MAY 2026 to 11 JUN 2026

SE-2, 14 MAY 2026 to 11 JUN 2026

NOTE: Jet aircraft only.
 NOTE: Landing south use Rwy 18L transition,
 landing north use Rwy 36R transition.
 Expect runway assignment from CLT approach.
 NOTE: Jet aircraft descend via Mach number until 280K,
 if unable, advise ATC.

NOTE: Chart not to scale.

CHARLESTON TRANSITION (CHS.STOCR5)
CHECR TRANSITION (CHECR.STOCR5)
PITRW TRANSITION (PITRW.STOCR5)

(CONTINUED ON FOLLOWING PAGE)

STOCR FIVE ARRIVAL (RNAV) Transition Routes

CHARLOTTE, NORTH CAROLINA
CHARLOTTE/DOUGLAS INTL (CLT)

(FLLGG.STOCR5) 14MAY26

(FLGG.STOCR5) 26134

AL-78 (FAA)

CHARLOTTE/DOUGLAS INTL (CLT)

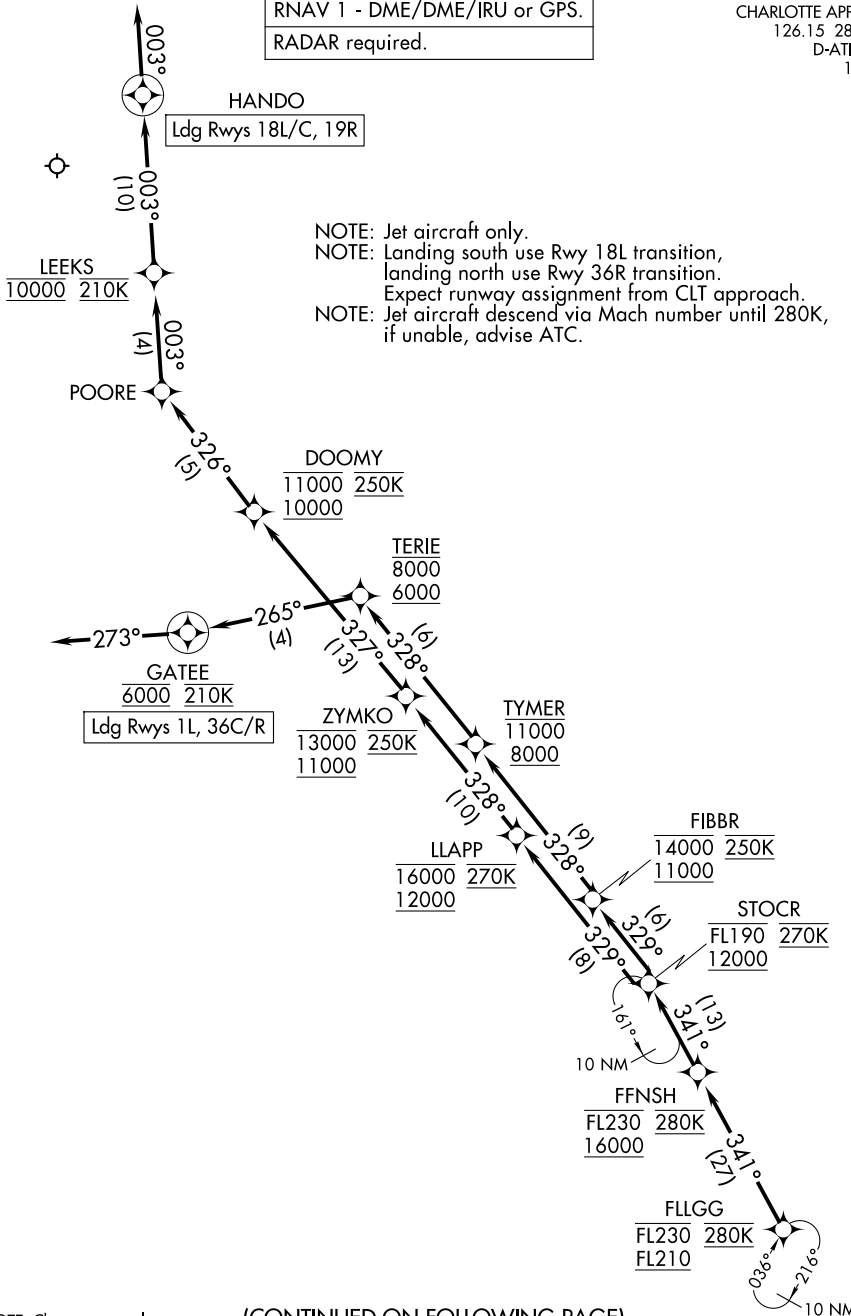
STOCR FIVE ARRIVAL (RNAV)

Arrival Routes

CHARLOTTE, NORTH CAROLINA

RNAV 1 - DME/DME/IRU or GPS.
RADAR required.

CHARLOTTE APP CON
126.15 282.325
D-ATIS ARR
121.15



NOTE: Jet aircraft only.
NOTE: Landing south use Rwy 18L transition, landing north use Rwy 36R transition. Expect runway assignment from CLT approach.
NOTE: Jet aircraft descend via Mach number until 280K, if unable, advise ATC.

SE-2, 14 MAY 2026 to 11 JUN 2026

SE-2, 14 MAY 2026 to 11 JUN 2026

NOTE: Chart not to scale.

(CONTINUED ON FOLLOWING PAGE)

STOCR FIVE ARRIVAL (RNAV)

Arrival Routes

(FLGG.STOCR5) 14MAY26

CHARLOTTE, NORTH CAROLINA
CHARLOTTE/DOUGLAS INTL (CLT)

NEW

(FLLGG.STOCR5) 26134

AL-78 (FAA)

CHARLOTTE/DOUGLAS INTL (CLT)
CHARLOTTE, NORTH CAROLINA

STOCR FIVE ARRIVAL (RNAV)

ARRIVAL ROUTE DESCRIPTION

From FLLGG on track 341° to cross FFNSH between 16000 and FL230 and at 280K, then on track 341° to cross STOCR between 12000 and FL190 and at 270K.

LANDING RUNWAYS 1L, 36C/R: From STOCR on track 329° to cross FIBBR between 11000 and 14000 and at 250K, then on track 328° to cross TYMER between 8000 and 11000, then on track 328° to cross TERIE between 6000 and 8000, then on track 265° to cross GATEE at 6000 and at 210K, then on track 273°. Expect RADAR vectors to final approach course.

LANDING RUNWAYS 18L/C, 19R: From STOCR on track 329° to cross LLAPP between 12000 and 16000 and at 270K, then on track 328° to cross ZYMKO between 11000 and 13000 and at 250K, then on track 327° to cross DOOMY between 10000 and 11000 and at 250K, then on track 326° to POORE, then on track 003° to cross LEEKS at 10000 and at 210K, then on track 003° to HANDO, then on track 003°. Expect RADAR vectors to final approach course.

SE-2, 14 MAY 2026 to 11 JUN 2026

SE-2, 14 MAY 2026 to 11 JUN 2026

STOCR FIVE ARRIVAL (RNAV)

(FLLGG.STOCR5) 14MAY26

CHARLOTTE, NORTH CAROLINA
CHARLOTTE/DOUGLAS INTL (CLT)