

LAS VEGAS, NEVADA

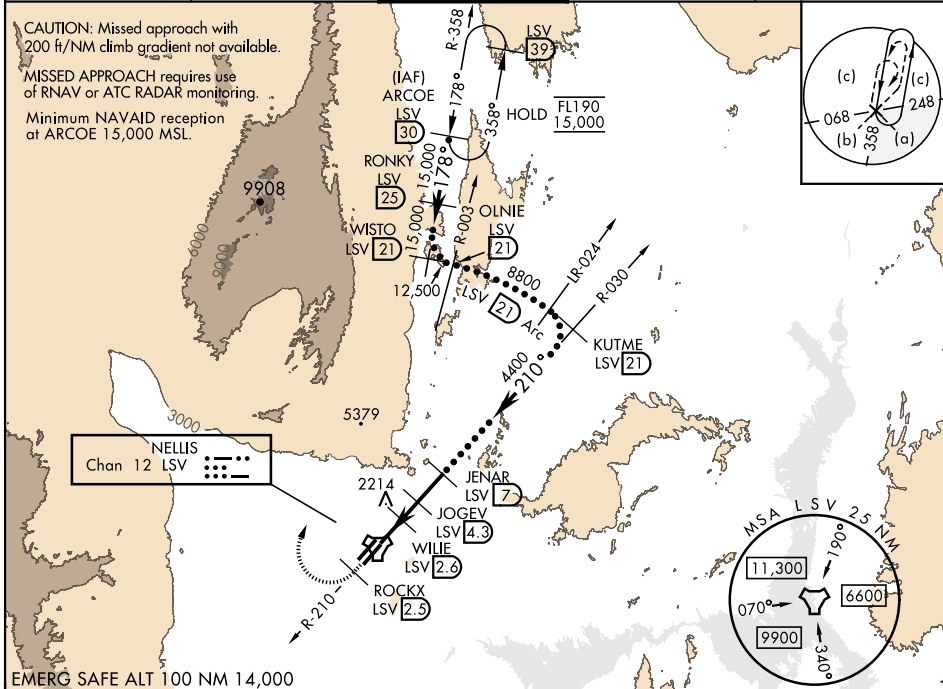
# HI-TACAN Z RWY 21L

TACAN LSV Chan <b>12</b>	APCH CRS <b>210°</b>	Rwy ldg 21L <b>10,051</b> TDZE <b>1865</b> Arprt Elev <b>1869</b>	Rwy ldg 21R <b>10,120</b> TDZE <b>1869</b>	AL-227 [USAF]	NELLIS AFB (KLSV)
--------------------------	----------------------	---	---	---------------	-------------------

▼ \* When ALS inop, increase CAT CDE vis to 1½ miles.  
 \*\* Circling not authorized SE of Rwy 3R-21L.

ALSF-1 (A1) MISSED APPROACH: Climb to 15,000, intercept LSV TACAN R-210 to 2.5 DME (ROCKX), then climbing right turn heading 043° to intercept LSV R-358 to ARCOE and hold, climb in hold to 15,000. Missed approach not for civil use.

ATIS <b>270.1</b>	APP CON <b>124.95 273.55</b>	TOWER <b>132.55 327.0</b>	GND CON <b>121.8 275.8</b>	CLNC DEL <b>120.9 289.4</b>
-------------------	------------------------------	---------------------------	----------------------------	-----------------------------

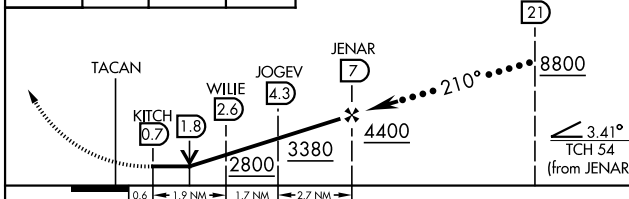


EMERG SAFE ALT 100 NM 14,000

Knots	60	120	180	240	300	360
V/V(fpm)	364	728	1092	1456	1820	2184

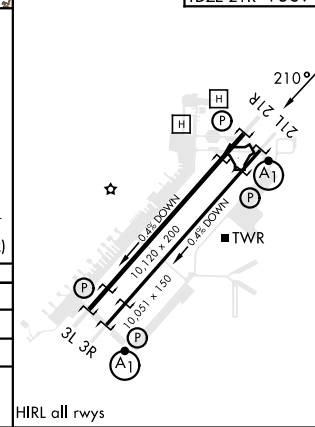
Min climb of 364 ft/NM to 9400 - Controlling Obstacle 5739

15,000 LSV R-210  
 ROCKX LSV 2.5  
 ARCOE R-358 30  
 VGS1 and descent angles not coincident (VGS1 Angle 3.00/TCH 54).



CATEGORY	C	D	E
S-21L *	2440-1¼	575 (600-1¼)	
SIDESTEP 21R	2440-1⅝	571 (600-1⅝)	
CIRCLING **	2560-2 691 (700-2)	2840-3 971 (1000-3)	3140-3 1271 (1300-3)

ELEV 1869	TDZE 21L 1865
	TDZE 21R 1869



LAS VEGAS, NEVADA      36°14'N-115°02'W      NELLIS AFB (KLSV)

# HI-TACAN Z RWY 21L

Amtd 10 10AUG23

SW-4, 14 MAY 2026 to 11 JUN 2026

SW-4, 14 MAY 2026 to 11 JUN 2026

HIRL all rwys