

# ZOOMM THREE DEPARTURE (RNAV)

AL-236 (FAA)

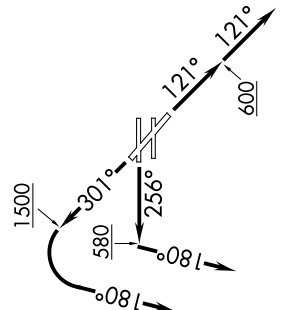
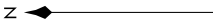
LONG BEACH (DAUGHERTY FLD) (LGB)

LONG BEACH, CALIFORNIA

SW-3, 14 MAY 2026 to 11 JUN 2026

**TOP ALTITUDE:  
(TURBOJETS) 17000**

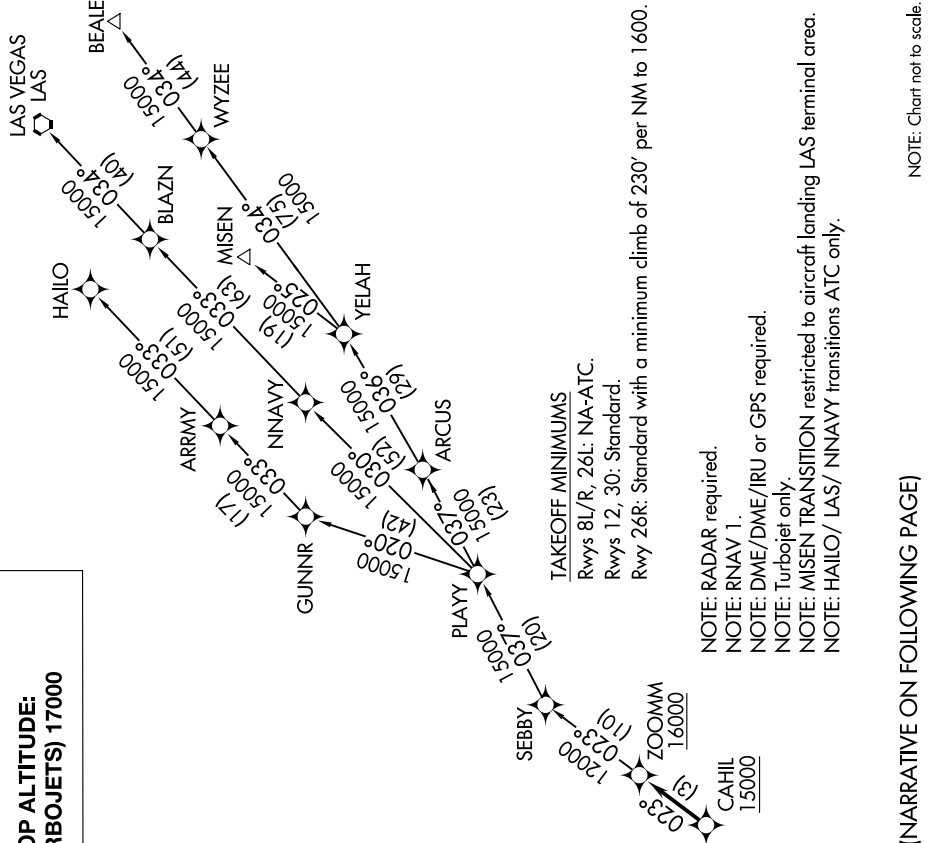
ATIS 127.75  
 CINCL DEL 118.15  
 GND CON 133.0, 257.6  
 SOCIAL DEP CON 125.35 316.125 (Rwy 12)  
 127.2 269.6 (Rwys 26R, 30)



# ZOOMM THREE DEPARTURE (RNAV)

LONG BEACH, CALIFORNIA

LONG BEACH (DAUGHERTY FLD) (LGB)



(NARRATIVE ON FOLLOWING PAGE)

NOTE: Chart not to scale.

SW-3, 14 MAY 2026 to 11 JUN 2026



DEPARTURE ROUTE DESCRIPTION

TAKEOFF RUNWAY 12: Climb on heading 121° to 600, then on heading 121° or as assigned by ATC for vectors to cross CAHIL at or above 15000, then on track 023° to cross ZOOMM at or above 16000, thence. . . .

TAKEOFF RUNWAY 26R: Climb on heading 256° to 580, then on heading 180° or as assigned by ATC for vectors to cross CAHIL at or above 15000, then on track 023° to cross ZOOMM at or above 16000, thence. . . .

TAKEOFF RUNWAY 30: Climb on heading 301° to 1500, then left turn heading 180° or as assigned by ATC for vectors to cross CAHIL at or above 15000, then on track 023° to cross ZOOMM at or above 16000, thence. . . .

. . . .on (transition) turbojets maintain 17000, expect filed altitude 10 minutes after departure.

BEALE TRANSITION (ZOOMM3.BEALE)

HAILO TRANSITION (ZOOMM3.HAILO)

LAS VEGAS TRANSITION (ZOOMM3.LAS)

MISEN TRANSITION (ZOOMM3.MISEN)

NNAVY TRANSITION (ZOOMM3.NNAVY)

SW-3, 14 MAY 2026 to 11 JUN 2026

SW-3, 14 MAY 2026 to 11 JUN 2026