

SW-3, 14 MAY 2026 to 11 JUN 2026

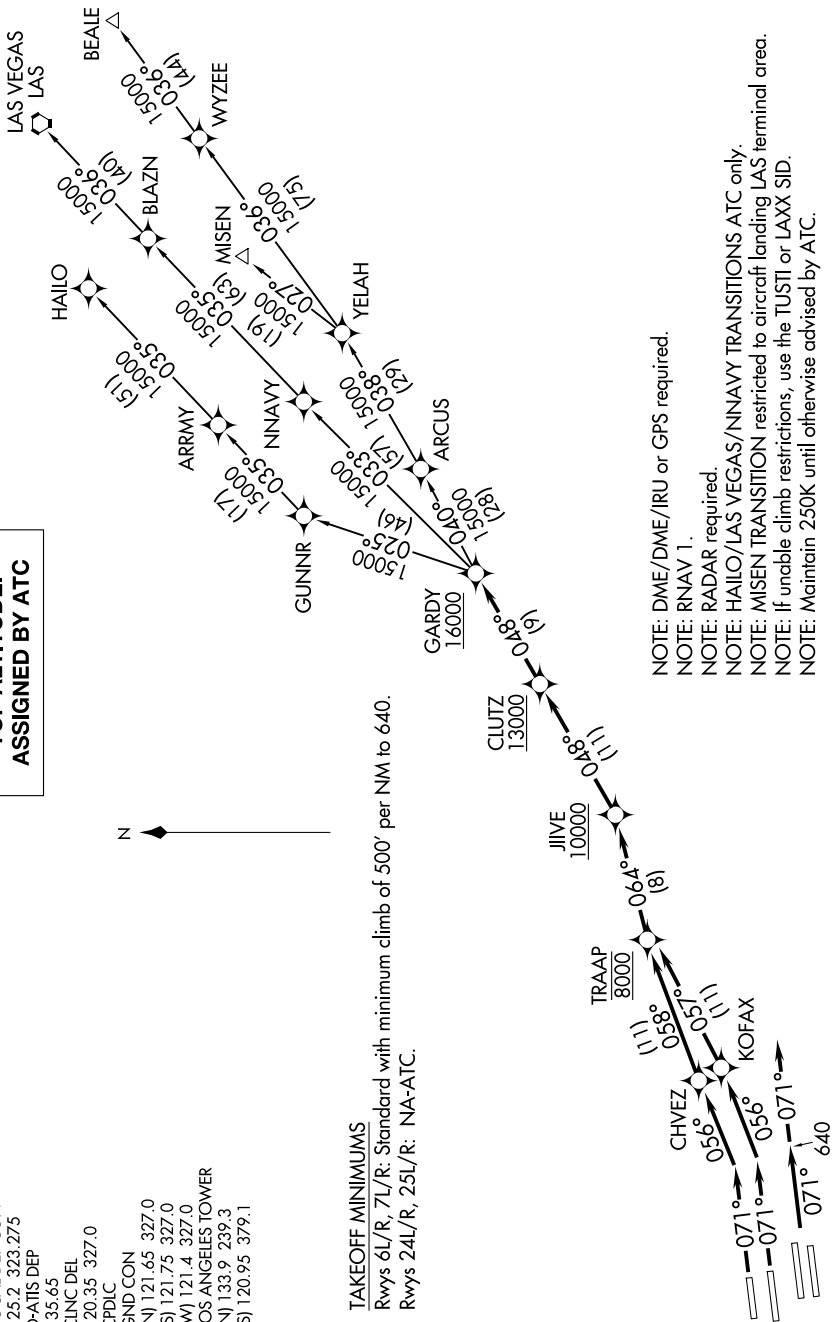
**TOP ALTITUDE:
ASSIGNED BY ATC**

SOCAL DEP CON
125.2 323.275
D-ATIS DEP
135.65
CLNC DEL
120.35 327.0
CFDLC
GND CON
(N) 121.65 327.0
(S) 121.75 327.0
(W) 121.4 327.0
LOS ANGELES TOWER
(N) 133.9 239.3
(S) 120.95 379.1



TAKEOFF MINIMUMS

Rwys 6L/R, 7L/R: Standard with minimum climb of 500' per NM to 640.
Rwys 24L/R, 25L/R: NA-ATC.



(CONTINUED ON FOLLOWING PAGE)

SW-3, 14 MAY 2026 to 11 JUN 2026

NOTE: Chart not to scale.



DEPARTURE ROUTE DESCRIPTION

TAKEOFF RUNWAY 6L: Climb on heading 071° to intercept course 056° to CHVEZ, then on track 058° to cross TRAAP at 8000, then on track 064° to cross JIIVE at or above 10000, then on track 048° to cross CLUTZ at or above 13000, then on track 048° to cross GARDY at or above 16000, thence. . . .

TAKEOFF RUNWAY 6R: Climb on heading 071° to intercept course 056° to KOFAX, then on track 057° to cross TRAAP at 8000, then on track 064° to cross JIIVE at or above 10000, then on track 048° to cross CLUTZ at or above 13000, then on track 048° to cross GARDY at or above 16000, thence. . . .

TAKEOFF RUNWAYS 7L/R: Climb on heading 071° to 640, then on heading 071° or as assigned by ATC, expect vectors to cross TRAAP at 8000, then on track 064° to cross JIIVE at or above 10000, then on track 048° to cross CLUTZ at or above 13000, then on track 048° to cross GARDY at or above 16000, thence. . . .

. . . .on (transition). Maintain ATC assigned altitude. Expect filed altitude five minutes after departure.

BEALE TRANSITION (GARDY4.BEALE)

HAILO TRANSITION (GARDY4.HAILO)

LAS VEGAS TRANSITION (GARDY4.LAS)

MISEN TRANSITION (GARDY4.MISEN)

NNAVY TRANSITION (GARDY4.NNAVY)

SW-3, 14 MAY 2026 to 11 JUN 2026

SW-3, 14 MAY 2026 to 11 JUN 2026