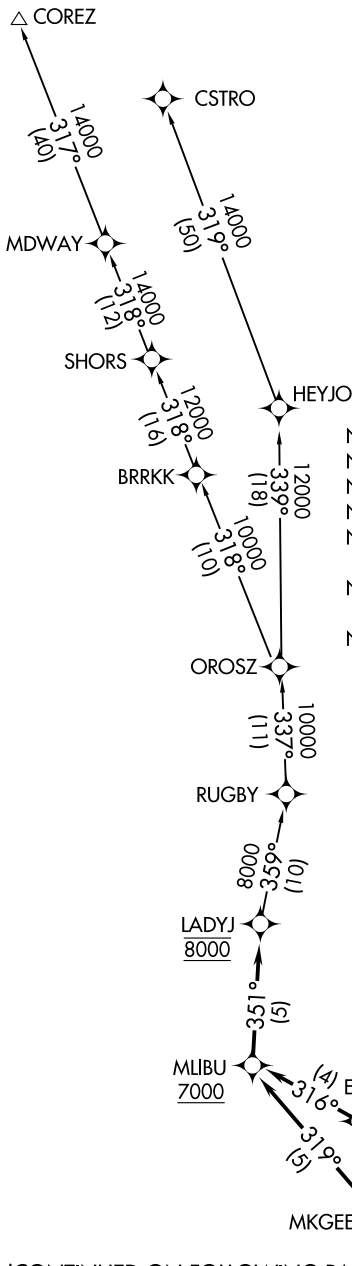


**TOP ALTITUDE:  
8000**

SOCAL DEP CON  
125.2 323.275  
D-ATIS DEP  
135.65  
CLNC DEL  
120.35 327.0  
CPDLC  
GND CON  
(N) 121.65 327.0  
(S) 121.75 327.0  
(W) 121.4 327.0  
LOS ANGELES TOWER  
(N) 133.9 239.3  
(S) 120.95 379.1



NOTE: DME/DME/IRU or GPS required.  
NOTE: RADAR required.  
NOTE: RNAV 1.  
NOTE: Restricted to turbojet aircraft only.  
NOTE: Some departures may be RADAR vectored to MLIBU, LADYJ, or OROSZ.  
NOTE: Maintain at or below 250K unless otherwise directed by ATC.  
NOTE: Use the DARRK, SUMMR, or VENTURA DEPARTURE during the time periods of 2100-0700 local in lieu of the LADYJ DEPARTURE.

TAKEOFF MINIMUMS

Rwys 6L/R, 7L/R: NA-ATC.

Rwys 24L/R, 25L/R: Standard with minimum climb of 500' per NM to 640.

(CONTINUED ON FOLLOWING PAGE)

NOTE: Chart not to scale.

SW-3, 14 MAY 2026 to 11 JUN 2026

SW-3, 14 MAY 2026 to 11 JUN 2026



DEPARTURE ROUTE DESCRIPTION

TAKEOFF RUNWAY 24L: Climb heading 251° to 640, then climb direct to cross DLREY at or below 3000, then on track 256° to cross ENNEY at or below 5000, then on track 253° to EYENO, then on track 316° to cross MLIBU at or above 7000, then on track 351° to cross LADYJ at 8000, thence. . . .

TAKEOFF RUNWAY 24R: Climb heading 251° to 640, then climb direct to cross FABRA at or below 3000, then on track 253° to cross ENNEY at or below 5000, then on track 253° to EYENO, then on track 316° to cross MLIBU at or above 7000, then on track 351° to cross LADYJ at 8000, thence. . . .

TAKEOFF RUNWAY 25L: Climb heading 251° to 640, then climb direct to cross HIIPR at or below 3000, then on track 256° to cross EVOSE at or below 5000, then on track 252° to MKGEE, then on track 319° to cross MLIBU at or above 7000, then on track 351° to cross LADYJ at 8000, thence. . . .

TAKEOFF RUNWAY 25R: Climb heading 251° to 640, then climb direct to cross DOCKR at or below 3000, then on track 252° to cross EVOSE at or below 5000, then on track 252° to MKGEE, then on track 319° to cross MLIBU at or above 7000, then on track 351° to cross LADYJ at 8000, thence. . . .

. . . .on (transition) maintain 8000. Expect filed altitude 5 minutes after departure.

COREZ TRANSITION (LADYJ4.COREZ)

CSTRO TRANSITION (LADYJ4.CSTRO)

SW-3, 14 MAY 2026 to 11 JUN 2026

SW-3, 14 MAY 2026 to 11 JUN 2026