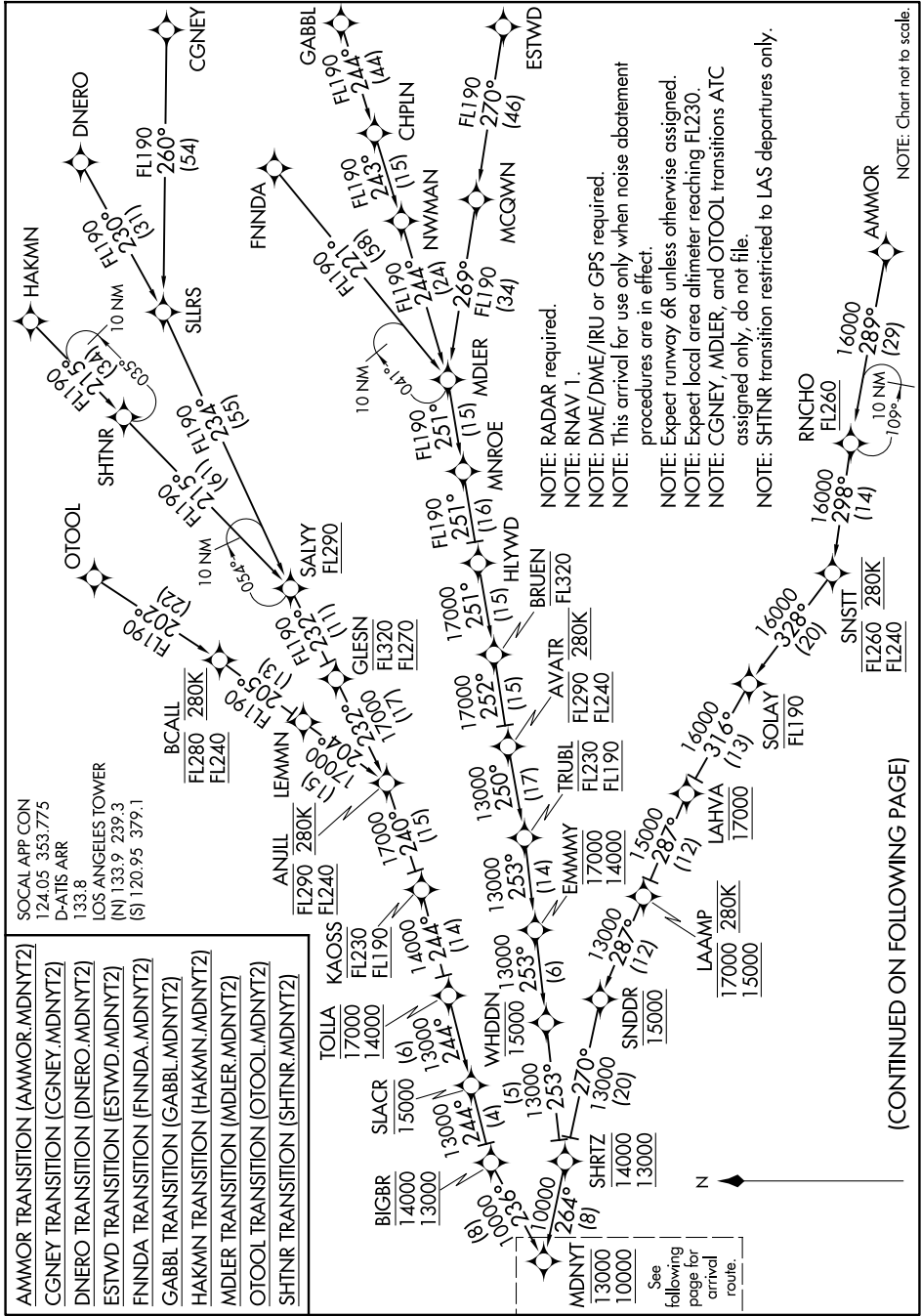


MDNYT TWO ARRIVAL (RNAV) Transition Routes

SW-3, 14 MAY 2026 to 11 JUN 2026



- AMMOR TRANSITION (AMMOR.MDNYT2)
- CGNEY TRANSITION (CGNEY.MDNYT2)
- DNERO TRANSITION (DNERO.MDNYT2)
- ESTWD TRANSITION (ESTWD.MDNYT2)
- FNND TRANSITION (FNND.MDNYT2)
- GABBL TRANSITION (GABBL.MDNYT2)
- HAKMN TRANSITION (HAKMN.MDNYT2)
- MDLER TRANSITION (MDLER.MDNYT2)
- OTOOL TRANSITION (OTOOL.MDNYT2)
- SHTNR TRANSITION (SHTNR.MDNYT2)

SOCAL APP CON
 124.05 353.775
 D-ATIS ARR
 133.8
 LOS ANGELES TOWER
 (N) 133.9 239.3
 (S) 120.95 379.1

(CONTINUED ON FOLLOWING PAGE)

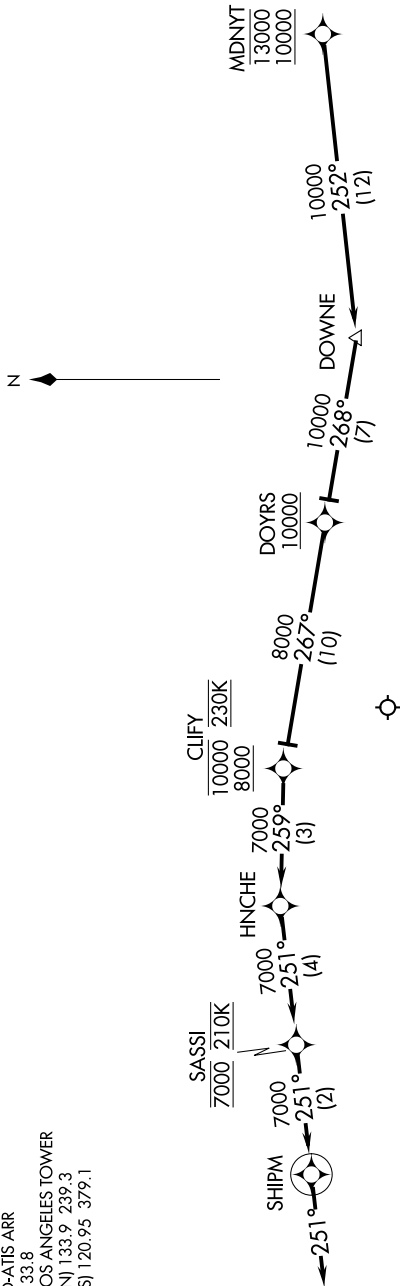
SW-3, 14 MAY 2026 to 11 JUN 2026

MDNYT TWO ARRIVAL (RNAV) Transition Routes

MDNYT TWO ARRIVAL (RNAV) Arrival Routes

SW-3, 14 MAY 2026 to 11 JUN 2026

SOCAL APP CON
124.05 353.775
D-ATIS ARR
133.8
LOS ANGELES TOWER
(N) 133.9 239.3
(S) 120.95 379.1



NOTE: RADAR required.

NOTE: RNAV 1.

NOTE: DME/DME/IRU or GPS required.

NOTE: This arrival for use only when noise abatement procedures are in effect.

NOTE: Expect runway 6R unless otherwise assigned.

NOTE: Expect local area altimeter reaching FL230.

NOTE: Chart not to scale.

ARRIVAL ROUTE DESCRIPTION

LANDING RUNWAYS 6L/R: From MDNYT on track 252° to DOWNE, then on track 268° to cross DOYRS at or above 10000, then on track 267° to cross CLIFY between 8000 and 10000 and at 230K, then on track 259° to HNCHE, then on track 251° to cross SASSI at 7000 and at 210K, then on track 251° to SHIPM, then on track 251°. Expect RADAR vectors to ILS or RNAV (RNP) RWY 6R final approach course.

LOST COMMUNICATIONS: In the event of lost communication proceed on the RNAV (RNP) RWY 6R or ILS or LOC RWY 6R approach.

SW-3, 14 MAY 2026 to 11 JUN 2026