

SW-3, 14 MAY 2026 to 11 JUN 2026

TOP ALTITUDE:  
FL230

TAKEOFF MINIMUMS

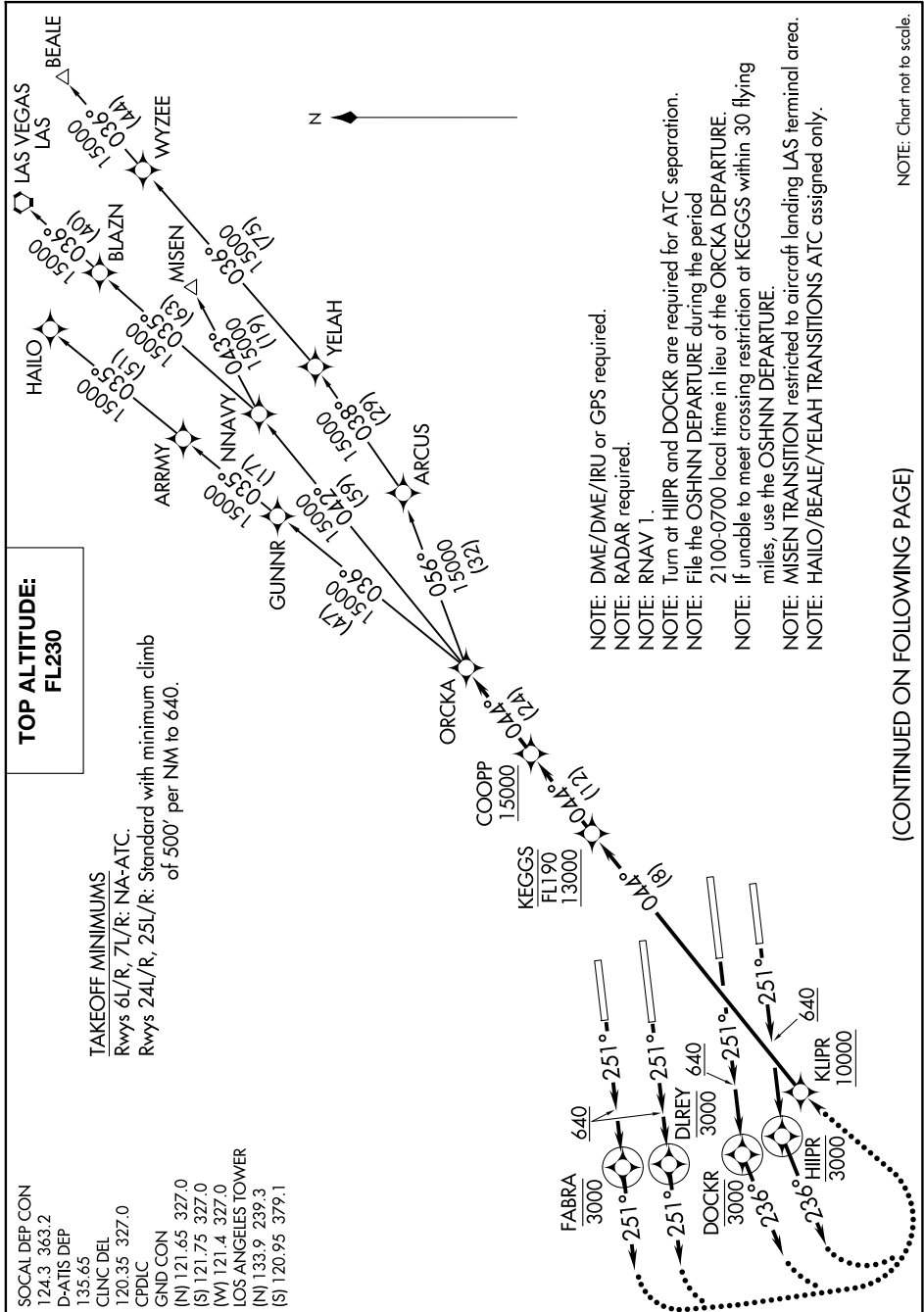
Rwys 6L/R, 7L/R: NA-AIC.

Rwys 24L/R, 25L/R: Standard with minimum climb of 500' per NM to 640.

- SOCAL DEP CON 124.3 363.2
- D-ATIS DEP 135.65
- CLNC DEL 120.35 327.0
- CPDLC GND/CON (N) 121.65 327.0 (S) 121.75 327.0 (W) 121.4 327.0
- LOS ANGELES TOWER (N) 133.9 239.3 (S) 120.95 379.1

ORCKA FIVE DEPARTURE (RNAV)  
(ORCA5.ORCKA) 10SEP20

LOS ANGELES, CALIFORNIA  
LOS ANGELES INTL (LAX)



(CONTINUED ON FOLLOWING PAGE)

NOTE: Chart not to scale.

SW-3, 14 MAY 2026 to 11 JUN 2026



DEPARTURE ROUTE DESCRIPTION

TAKEOFF RUNWAY 24L: Climb on heading 251° to 640, then climb direct to cross DLREY at or below 3000, then on heading 251° or as assigned by ATC, expect left turn to cross KLIPR at or above 10000, then on track 044° to cross KEGGS at or above 13000 and at or below FL190, then on track 044° to cross COOPP at or above 15000, then on track 044° to ORCKA, thence. . . .

TAKEOFF RUNWAY 24R: Climb on heading 251° to 640, then climb direct to cross FABRA at or below 3000, then on heading 251° or as assigned by ATC, expect left turn to cross KLIPR at or above 10000, then on track 044° to cross KEGGS at or above 13000 and at or below FL190, then on track 044° to cross COOPP at or above 15000, then on track 044° to ORCKA, thence. . . .

TAKEOFF RUNWAY 25L: Climb on heading 251° to 640, then climb direct to cross HIIPR at or below 3000, then on heading 236° or as assigned by ATC, expect left turn to cross KLIPR at or above 10000, then on track 044° to cross KEGGS at or above 13000 and at or below FL190, then on track 044° to cross COOPP at or above 15000, then on track 044° to ORCKA, thence. . . .

TAKEOFF RUNWAY 25R: Climb on heading 251° to 640, then climb direct to cross DOCKR at or below 3000, then on heading 236° or as assigned by ATC, expect left turn to cross KLIPR at or above 10000, then on track 044° to cross KEGGS at or above 13000 and at or below FL190, then on track 044° to cross COOPP at or above 15000, then on track 044° to ORCKA, thence. . . .

. . . .on (transition). Maintain FL230. Expect filed altitude five minutes after departure.

LOST COMMUNICATIONS: If not in contact with departure control within five minutes after departure, turn left and proceed direct KLIPR Waypoint, climb to FL230 or filed altitude whichever is lower, and when able proceed direct filed or assigned route/fix/transition. Aircraft filing FL240 or above, climb to filed altitude ten minutes after departure.

BEALE TRANSITION (ORCKA5.BEALE)

HAILO TRANSITION (ORCKA5.HAILO)

LAS VEGAS TRANSITION (ORCKA5.LAS)

MISEN TRANSITION (ORCKA5.MISEN)

YELAH TRANSITION (ORCKA5.YELAH)

SW-3, 14 MAY 2026 to 11 JUN 2026

SW-3, 14 MAY 2026 to 11 JUN 2026