

# SUMMR TWO DEPARTURE (RNAV)

AL-237 (FAA)

LOS ANGELES INTL (LAX)  
LOS ANGELES, CALIFORNIA

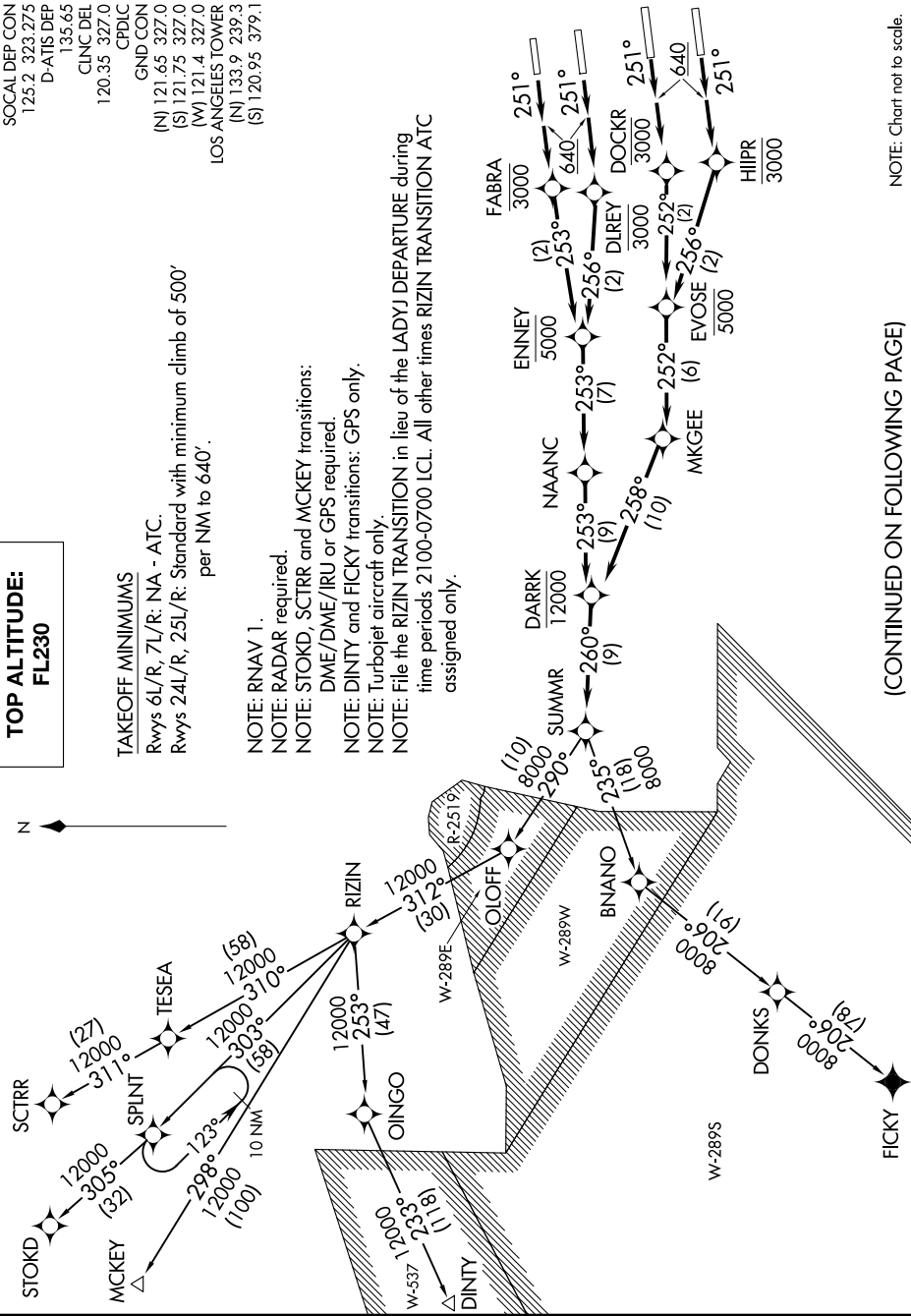
SW-3, 14 MAY 2026 to 11 JUN 2026

**TOP ALTITUDE:**  
**FL230**

SOCAL DEP CON  
125.2 323.275  
D-ATIS DEP  
135.65  
CLINC DEL  
120.35 327.0  
CPDIC  
GND CON  
(N) 121.65 327.0  
(S) 121.75 327.0  
(W) 121.4 327.0  
LOS ANGELES TOWER  
(N) 133.9 239.3  
(S) 120.95 379.1

**TAKEOFF MINIMUMS**  
Rwys 6L/R, 7L/R: NA - ATC.  
Rwys 24L/R, 25L/R: Standard with minimum climb of 500' per NM to 640'.

NOTE: RNAV 1.  
NOTE: RADAR required.  
NOTE: STOKD, SCTRR and MCKEY transitions:  
DME/DME/IRU or GPS required.  
NOTE: DINTY and FICKY transitions: GPS only.  
NOTE: Turbojet aircraft only.  
NOTE: File the RIZIN TRANSITION in lieu of the LADYJ DEPARTURE during time periods 2100-0700 LCL. All other times RIZIN TRANSITION ATC assigned only.



(CONTINUED ON FOLLOWING PAGE)

NOTE: Chart not to scale.

# SUMMR TWO DEPARTURE (RNAV)

LOS ANGELES, CALIFORNIA  
LOS ANGELES INTL (LAX)

SW-3, 14 MAY 2026 to 11 JUN 2026



DEPARTURE ROUTE DESCRIPTION

TAKEOFF RUNWAY 24L: Climb heading 251° to 640, then climb direct to cross DLREY at or below 3000, then on track 256° to cross ENNEY at or below 5000, then on track 253° to NAANC, then on track 253° to cross DARRK at or below 12000, then on track 260° to SUMMR, thence. . . .

TAKEOFF RUNWAY 24R: Climb heading 251° to 640, then climb direct to cross FABRA at or below 3000, then on track 253° to cross ENNEY at or below 5000, then on track 253° to NAANC, then on track 253° to cross DARRK at or below 12000, then on track 260° to SUMMR, thence. . . .

TAKEOFF RUNWAY 25L: Climb heading 251° to 640, then climb direct to cross HIIPR at or below 3000, then on track 256° to cross EVOSE at or below 5000, then on track 252° to MKGEE, then on track 258° to cross DARRK at or below 12000, then on track 260° to SUMMR, thence. . . .

TAKEOFF RUNWAY 25R: Climb heading 251° to 640, then climb direct to cross DOCKR at or below 3000, then on track 252° to cross EVOSE at or below 5000, then on track 252° to MKGEE, then on track 258° to cross DARRK at or below 12000, then on track 260° to SUMMR, thence. . . .

. . . .on (transition) maintain FL230. Expect filed altitude 5 minutes after departure.

DINTY TRANSITION (SUMMR2.DINTY)

FICKY TRANSITION (SUMMR2.FICKY)

MCKEY TRANSITION (SUMMR2.MCKEY)

RIZIN TRANSITION (SUMMR2.RIZIN)

SCTRR TRANSITION (SUMMR2.SCTRR)

STOKD TRANSITION (SUMMR2.STOKD)

SW-3, 14 MAY 2026 to 11 JUN 2026

SW-3, 14 MAY 2026 to 11 JUN 2026