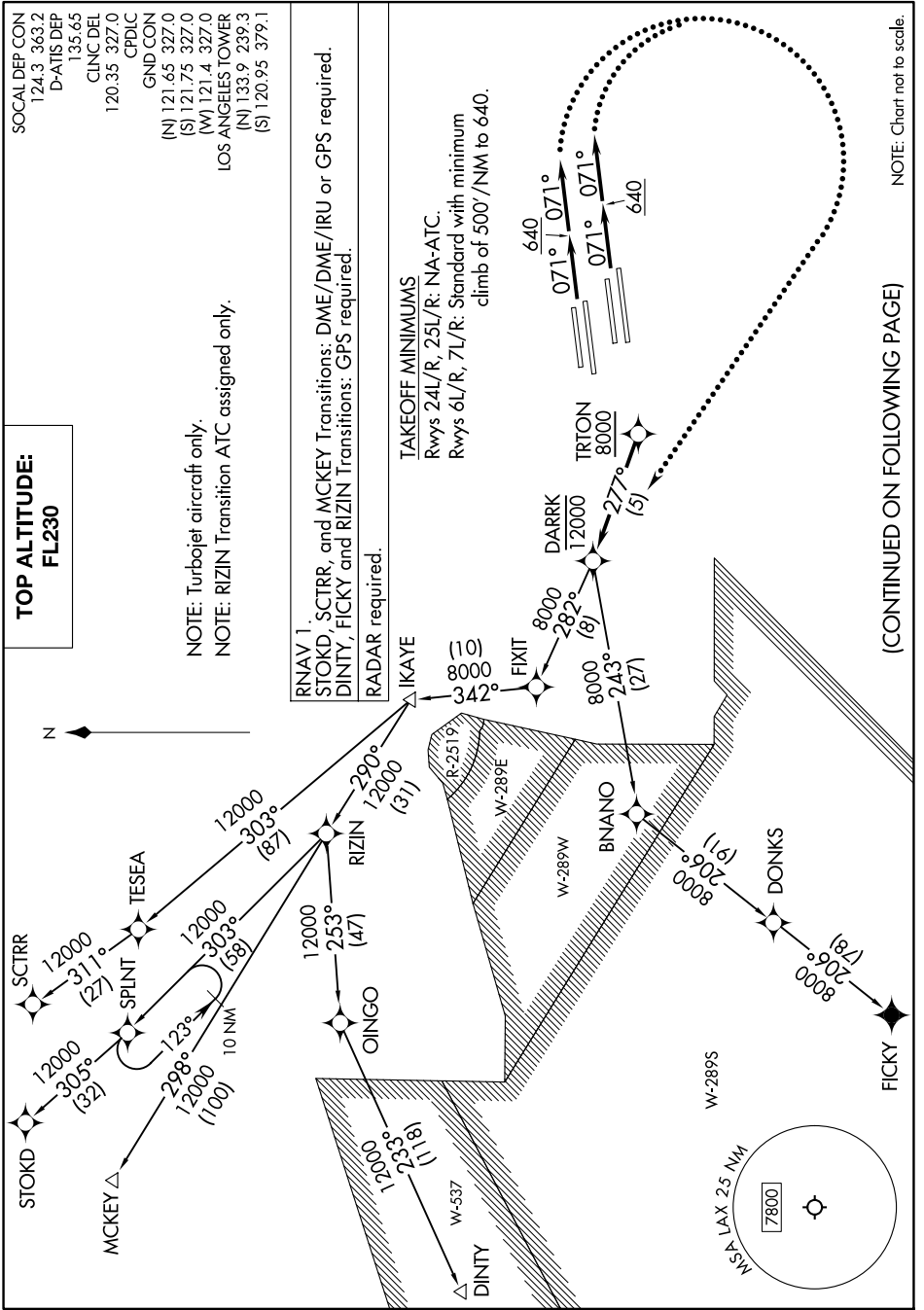


TRTON THREE DEPARTURE (RNAV)

AL-237 (FAA)

LOS ANGELES INTL (LAX)
LOS ANGELES, CALIFORNIA

SW-3, 14 MAY 2026 to 11 JUN 2026



(CONTINUED ON FOLLOWING PAGE)

SW-3, 14 MAY 2026 to 11 JUN 2026

TRTON THREE DEPARTURE (RNAV)

LOS ANGELES, CALIFORNIA
LOS ANGELES INTL (LAX)



DEPARTURE ROUTE DESCRIPTION

TAKEOFF RUNWAYS 6L/R, 7L/R: Climb heading 071° to 640 then climb on heading 071°, or as assigned by ATC, for RADAR vectors to cross TRTON at or above 8000, thence

. . . . on track 277° to cross DARRK at or below 12000 then on transition. Maintain FL230. Expect filed altitude 5 minutes after departure.

LOST COMMUNICATIONS

If not in contact with departure control within 5 minutes after departure, turn right and proceed direct DARRK waypoint, cross DARRK at or below 12000', climb to FL230 or filed altitude, whichever is lower, and when able proceed direct filed route or assigned route/fix/transition. Aircraft filing FL240 or above, climb to filed altitude ten minutes after departure.

DINTY TRANSITION (TRTON3.DINTY)

FICKY TRANSITION (TRTON3.FICKY)

MCKEY TRANSITION (TRTON3.MCKEY)

RIZIN TRANSITION (TRTON3.RIZIN)

SCTRR TRANSITION (TRTON3.SCTRR)

STOKD TRANSITION (TRTON3.STOKD)

SW-3, 14 MAY 2026 to 11 JUN 2026

SW-3, 14 MAY 2026 to 11 JUN 2026