

IMPERIAL BEACH, CALIFORNIA

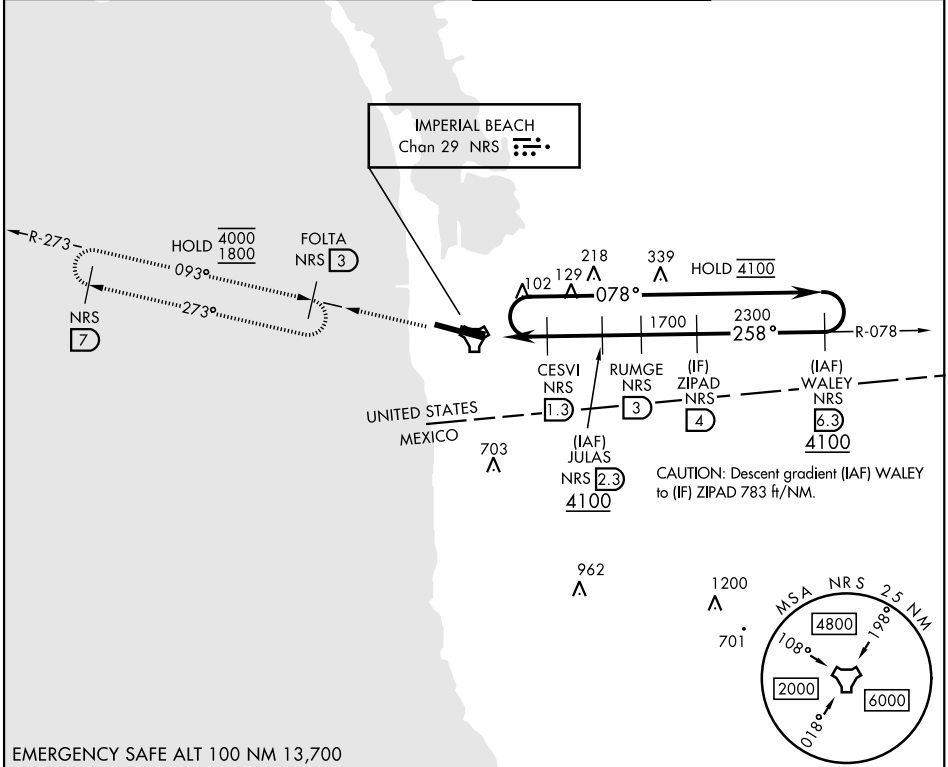
COPTER TACAN RWY 27

IMPERIAL BEACH NOLF (REAM FIELD) (KNRS)

TACAN NRS Chan 29	APCH CRS 258°	Rwy Idg TDZE Arpt Elev 4998 23 23
-----------------------------	-------------------------	---

[USN]

RADAR required		MISSED APPROACH: Climb to 1800 on NRS TACAN R-078 to NRS and R-273 to FOLTA. Continue climb-in-hold to 1800.	
▼ Limit all segments to 90 KIAS.			
ATIS ★ /ASOS 276.2	SOCAL APP CON 125.15 317.55	IMPERIAL BEACH TOWER ★ 120.65 239.25	GND CON 285.575

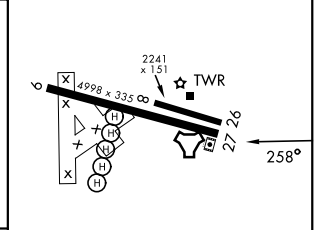
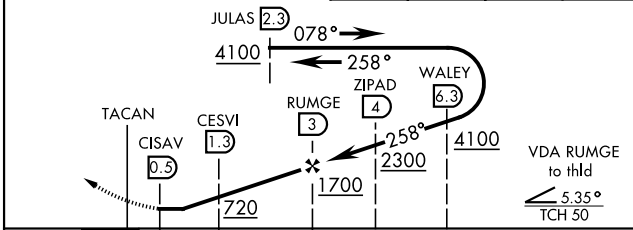


SW-3, 14 MAY 2026 to 11 JUN 2026

SW-3, 14 MAY 2026 to 11 JUN 2026

EMERGENCY SAFE ALT 100 NM 13,700

1800 NRS R-078	NRS	FOLTA NRS 03	ELEV 23	TDZE 23
----------------------	-----	--------------------	---------	---------



CATEGORY	COPTER		HIRL Rwy 9-27
H-27	400-½	377 (400-½)	

IMPERIAL BEACH, CALIFORNIA

32°34'N-117°07'W

IMPERIAL BEACH NOLF (REAM FIELD) (KNRS)

Amdt 7 19FEB26

COPTER TACAN RWY 27