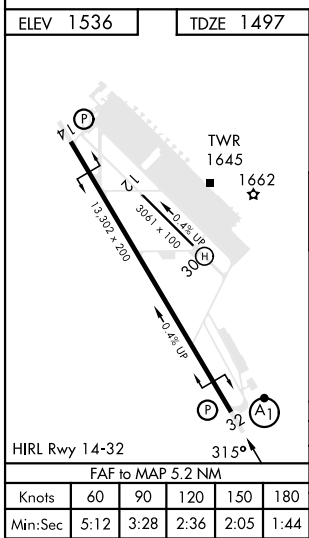
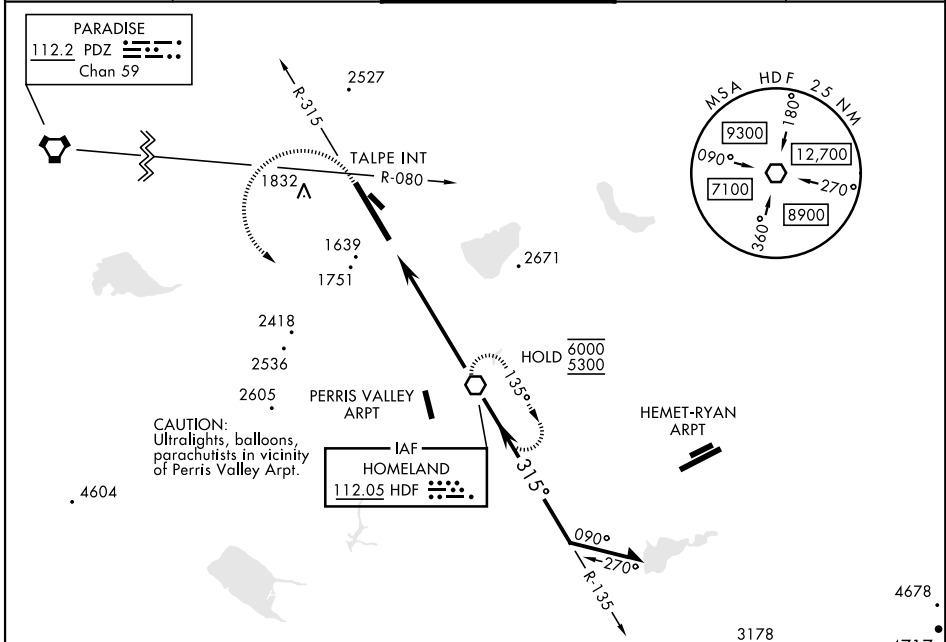


VOR Y RWY 32

VOR HDF 112.05	APCH CRS 315°	Rwy Idg 13,302 TDZE 1497 Arpt Elev 1536	AL-348 [USAF]	MARCH ARB (KRIV)
*When ALS inop, increase CAT AB RVR to 60 and vis to 1½ mile, CAT CDE vis to 1½ miles. **Circling not authorized NE of Rwy 14-32. Rapid rising terrain.			ALSF-1 	MISSED APPROACH: Climb to 5300 on HDF VOR R-315 to TALPE, then turn left direct HDF continue climb-in-hold to 5300.

ATIS 134.75 239.05	APP/DEP CON * 133.5 306.975	TOWER 127.65 253.5	GND CON 121.75 335.8	CLNC DEL 127.775 268.7
-------------------------------------	--	-------------------------------------	---------------------------------------	---



EMERG SAFE ALT 100 NM 13,700

5300 HDF R-315	TALPE INT	HDF	HDF VOR
-------------------	-----------	-----	---------

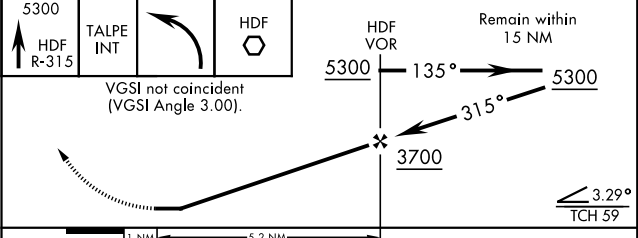
VGSIs not coincident (VGSi Angle 3.00).

Remain within 15 NM

5300 — 135° —> 5300

5300 — 315° —> 3700

3.29° TCH 59



CATEGORY	A	B	C	D	E
S-32 *	2040/40 543 (600-¾)		2040/60	543	(600-1½)
CIRCLING **	2180-1½ 644 (700-1½)	2260-1½ 724 (800-1½)	2300-2¼ 764 (800-2¼)	2440-3 904 (1000-3)	2840-3 1304 (1400-3)

VOR Y RWY 32

SW-3, 14 MAY 2026 to 11 JUN 2026

SW-3, 14 MAY 2026 to 11 JUN 2026