

SW-3, 14 MAY 2026 to 11 JUN 2026

SOCAL APP CON  
124.35 279.625  
KNZY ATIS \*  
317.8  
SAN-D-ATIS  
134.8

NOTE: Turboprop aircraft only.  
NOTE: RADAR required.  
NOTE: When SAN arrivals are using Rwy 9, aircraft can expect to depart and re-enter the TCA southwest of PGY VORTAC.

TURBOJET VERTICAL NAVIGATION

PLANNING INFORMATION

TNP, EED and PKE transitions  
expect FL240 at SALTN  
expect 12000 at CARUL

OCEANSIDE  
115.3 OCN  
Chan 100

LOCALIZER  
I-SAN  
111.55  
Chan 52(Y)

MISSION BAY  
117.8 MZB  
Chan 125

LOCALIZER  
I-UBR  
110.9  
Chan 46

NEEDLES  
115.2 EED  
Chan 99

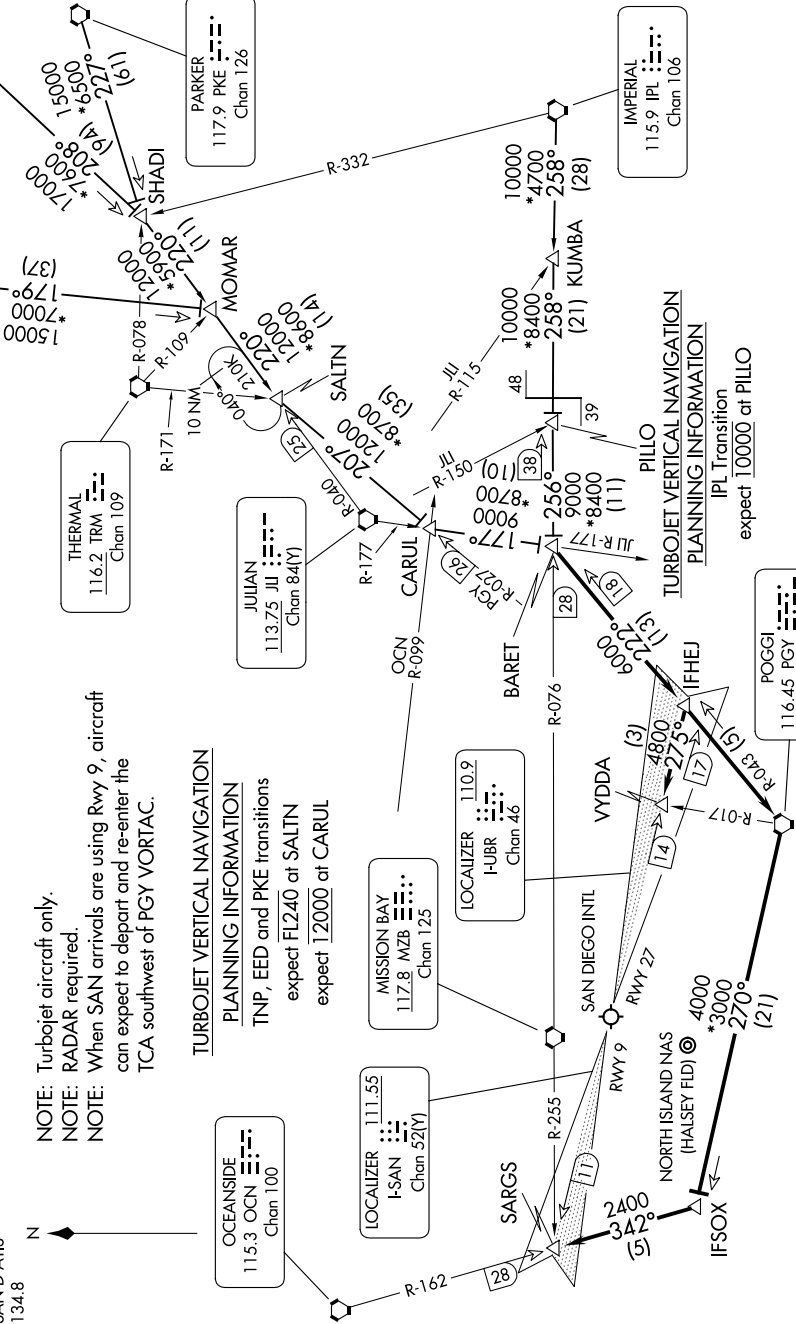
TWENTYNINE PALMS  
114.2 TNP  
Chan 89

THERMAL  
116.2 TRM  
Chan 109

JULIAN  
113.75 JIJ  
Chan 84(Y)

PARKER  
117.9 PKE  
Chan 126

IMPERIAL  
115.9 IPL  
Chan 106



NOTE: Chart not to scale.

SW-3, 14 MAY 2026 to 11 JUN 2026

(CONTINUED ON FOLLOWING PAGE)

ARRIVAL ROUTE DESCRIPTION

IMPERIAL TRANSITION (IPL.BARET5): From over IPL VORTAC on IPL R-258 and MZB R-076 to BARET INT. Thence . . . .

NEEDLES TRANSITION (EED.BARET5): From over EED VORTAC on EED R-208 to SHADI INT, then on JLI R-040 to SALTN INT, then on PGY R-027 to CARUL INT, then on JLI R-177 to BARET INT. Thence . . . .

PARKER TRANSITION (PKE.BARET5): From over PKE VORTAC on PKE R-227 to SHADI INT, then on JLI R-040 to SALTN INT, then on PGY R-027 to CARUL INT, then on JLI R-177 to BARET INT. Thence . . . .

TWENTYNINE PALMS TRANSITION (TNP.BARET5): From over TNP VORTAC on TNP R-179 to MOMAR INT, then on JLI R-040 to SALTN INT, then on PGY R-027 to CARUL INT, then on JLI R-177 to BARET INT. Thence . . . .

. . . .LANDING SAN RWY 9: From BARET INT on PGY R-043 to PGY VORTAC, then on PGY R-270 to IFSOX, then on OCN R-162 to SARGS INT.

Expect ILS Rwy 9 approach to SAN or LOC/DME-B to NZY.

. . . .LANDING SAN RWY 27 and NZY: From BARET INT on PGY R-043 to IFHEJ, then on I-UBR localizer to VYDDA INT. Expect LOC Rwy 27 approach to SAN or LOC/DME-A to NZY.

LOST COMMUNICATIONS: In the event of lost communications, North Island arrivals shall execute the TACAN Rwy 29 or TACAN Rwy 36.

SW-3, 14 MAY 2026 to 11 JUN 2026

SW-3, 14 MAY 2026 to 11 JUN 2026