

# BORDER SEVEN DEPARTURE

AL-373 (FAA)

SAN DIEGO INTL (SAN)  
SAN DIEGO, CALIFORNIA

SW-3, 14 MAY 2026 to 11 JUN 2026

## DEPARTURE ROUTE DESCRIPTION

**TAKEOFF RUNWAY 9:** Climb on heading 093° to intercept MZB VORTAC R-096 to BROWS INT. Thence. . . .

**TAKEOFF RUNWAY 27:** Climb on heading 278° until PGY 19 DME, then left turn on heading 123° to intercept PGY VORTAC R-260 and R-069 to BROWS INT. Thence. . . .

. . . . (transition) or (assigned route). Maintain assigned altitude. Expect filed altitude/flight level 10 minutes after departure.

**IMPERIAL TRANSITION (BRDR7.IPL):** From over BROWS INT on PGY R-069 and IPL R-250 to IPL VORTAC.

**JULIAN TRANSITION (BRDR7.JJI):** From over BROWS INT on JJI R-182 to JJI VORTAC.

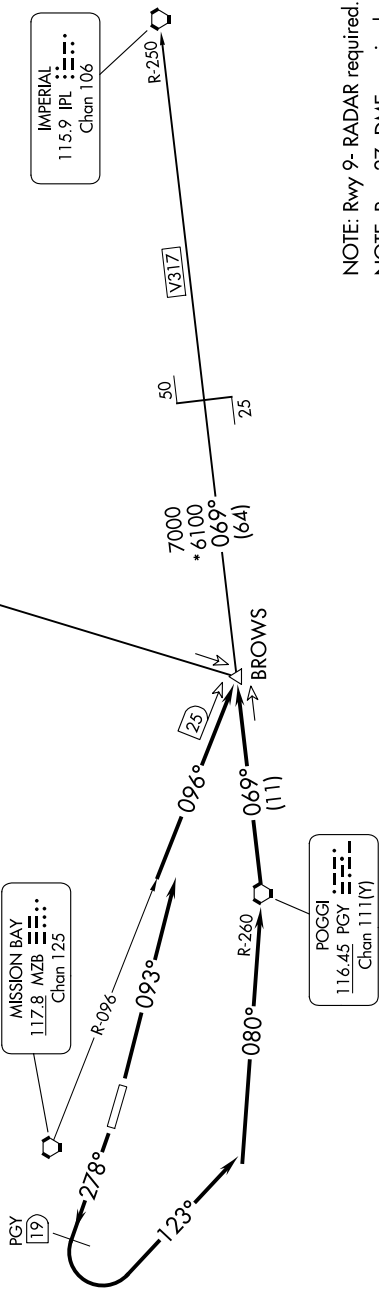
## TOP ALTITUDE: ASSIGNED BY ATC

SOCAL DEP CON  
EAST 124.35 279.625  
WEST 119.6 363.1  
D-ATIS  
134.8  
CLNC DEL  
125.9  
CPDLC  
GND CON  
123.9  
LINDBERGH TOWER  
118.3 338.225

JULIAN  
113.75 JJI : : : : :  
Chan 84(Y)

## TAKEOFF MINIMUMS

Rwy 9: 400-1 with minimum climb of 610' per NM to 1900 or standard with minimum climb of 686' per NM to 1900.  
Rwy 27: 400-2½ or standard with minimum climb of 353' per NM to 400.



MISSION BAY  
117.8 MZB : : : : :  
Chan 125

POGGI  
116.45 PGY : : : : :  
Chan 111(Y)

IMPERIAL  
115.9 IPL : : : : :  
Chan 106

NOTE: Rwy 9- RADAR required.  
NOTE: Rwy 27- DME required.

NOTE: Chart not to scale.

# BORDER SEVEN DEPARTURE

SW-3, 14 MAY 2026 to 11 JUN 2026