

SW-3, 14 MAY 2026 to 11 JUN 2026

**DEPARTURE ROUTE DESCRIPTION**

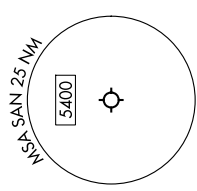
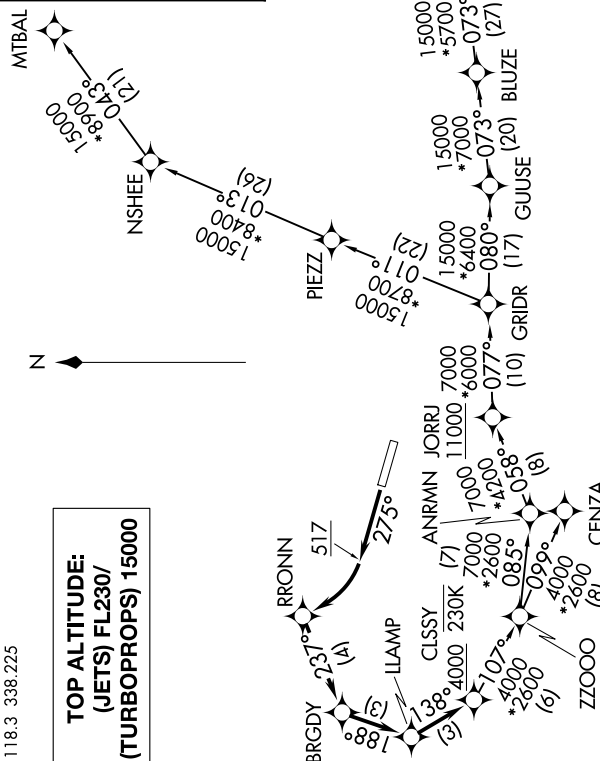
**TAKEOFF RUNWAY 27:** Climb on heading 275° to 517, then climbing right turn direct RRONN, then on depicted route to cross CLSSY at or above 4000 and at or below 230K, then on transition. Jets maintain FL230, turbo-props maintain 15000, expect filed altitude 10 minutes after departure.

CENZA TRANSITION (CLSSY3.CENZA)  
GILA BEND TRANSITION (CLSSY3.GBN)  
HOGGZ TRANSITION (CLSSY3.HOGGZ)  
MTBAL TRANSITION (CLSSY3.MTBAL)  
TGOLD TRANSITION (CLSSY3.TGOLD)

RNAV 1 - DME/DME/IRU or GPS.  
RADAR required for non-GPS equipped aircraft.

SOCAL DEP CON  
119.6 363.1  
D-AIS  
134.8  
CLNC DEL  
125.9  
GND CON  
123.9  
LINDBERGH TOWER  
118.3 338.225

**TOP ALTITUDE:  
(JETS) FL230/  
(TURBOPROPS) 15000**



**TAKEOFF MINIMUMS**  
Rwy 27: Standard with minimum climb of 500'/NM to 517.

**NOTE:** Jets/turbo-props only.  
**NOTE:** HOGGZ Transition for PHX terminal area arrivals only.

SW-3, 14 MAY 2026 to 11 JUN 2026

NOTE: Chart not to scale.