

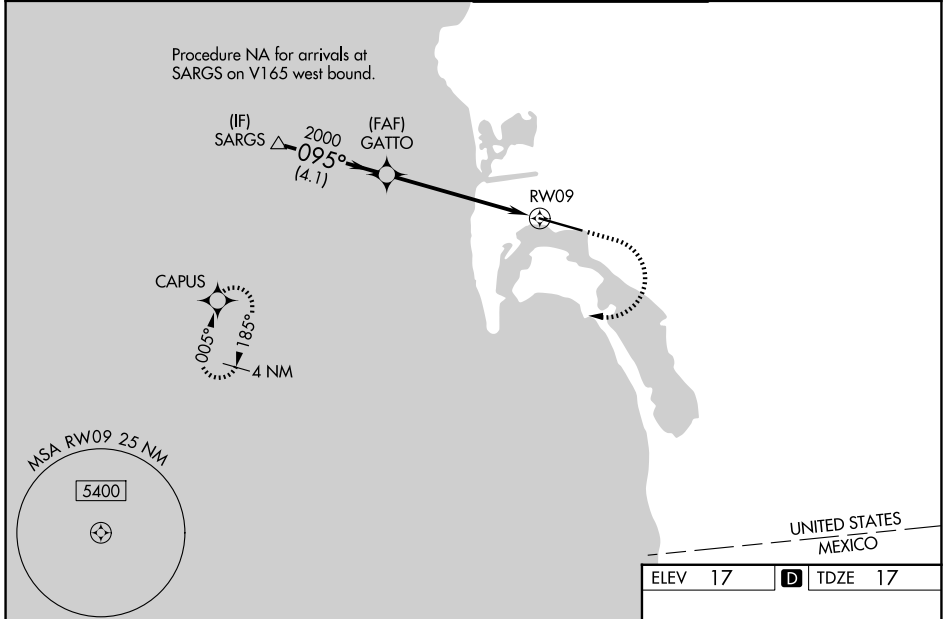
WAAS CH 49237 W09A	APP CRS 095°	Rwy Ldg 7280 TDZE 17 Apt Elev 17
--	------------------------	---

RNAV (GPS) RWY 9

SAN DIEGO INTL (SAN)

RNP APCH.	<p>⚠ Circling NA north of Rwy 9-27. For uncompensated Baro-VNAV systems, LNAV/VNAV NA below 6°C or above 47°C. When Circling to Rwy 27 at night, operational VGSI required, remain on or above VGSI glidepath until threshold. Rwy 9 helicopter visibility reduction below RVR 4000 NA. Inop table does not apply to LPV all Cats. For inop ALS, increase LNAV Cats A/B visibility to RVR 5500.</p>	MALSRL	<p>MISSED APPROACH: Climb to 2000 then climbing right turn to 3000 direct CAPUS and hold.</p>

D-ATIS 134.8	SOCAL APP CON 119.6 363.1 (W) 124.35 279.625 (E)	LINDBERGH TOWER 118.3 338.225	GND CON 123.9
------------------------	--	---	-------------------------



<p>VGSI and RNAV glidepath not coincident (VGSI Angle 3.30/TCH 76).</p>		<p>2000 3000 CAPUS</p>	<p>ELEV 17 TDZE 17</p>		
<p>SARGS</p> <p>2100 095° 2000</p> <p>GP 3.10° TCH 55</p> <p>4.1 NM 4.3 NM 1.6 NM</p>		<p>GATTO</p> <p>*1.6 NM to RWY 9</p> <p>RWY 9</p> <p>*LNAV only.</p> <p>095°</p> <p>TWR 9401 X 200</p>			
CATEGORY	A	B	C	D	
LPV DA		262/40	245 (300-¾)		
LNAV/VNAV DA		621-1½	604 (700-1½)		
LNAV MDA	600/40	583 (600-¾)	600-1¼	583 (600-1¼)	
CIRCLING	800-1 783 (800-1)	820-1 803 (900-1)	820-2¼ 803 (900-2¼)	940-3 923 (1000-3)	TDZL/RCLS Rwy 9 and 27 HIRL Rwy 9-27

SW-3, 14 MAY 2026 to 11 JUN 2026

SW-3, 14 MAY 2026 to 11 JUN 2026