

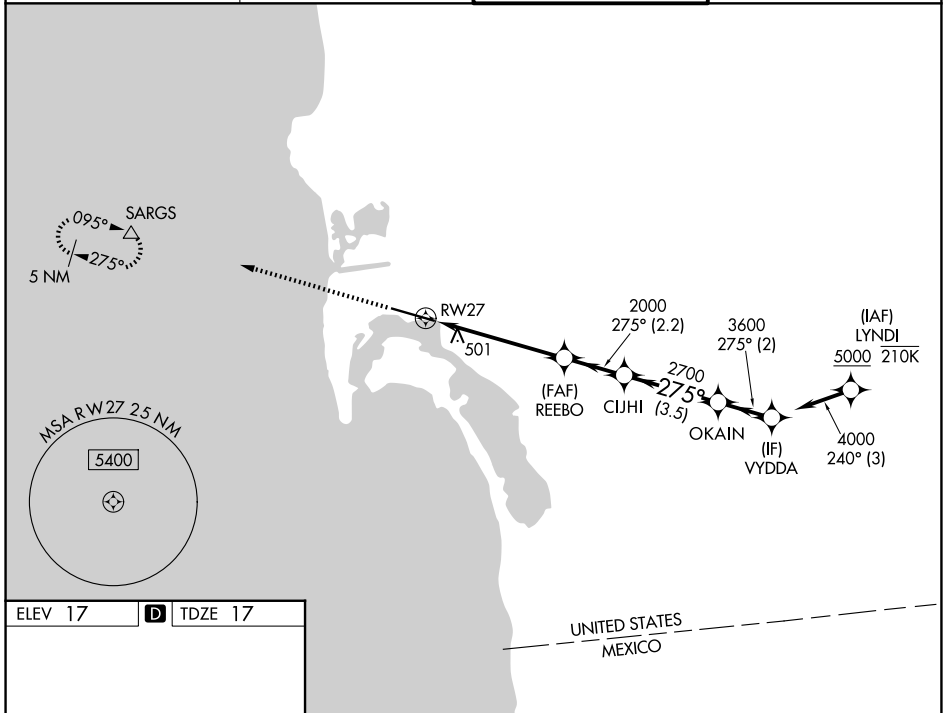
| | | |
|--|------------------------|---|
| WAAS CH 82527 W27A | APP CRS 275° | Rwy Ldg 7591 TDZE 17 Apt Elev 17 |
|--|------------------------|---|

RNAV (GPS) Y RWY 27

SAN DIEGO INTL (SAN)

| | | |
|---|----------|---|
| RNP APCH. | MALS | MISSED APPROACH: Climb to 2500 direct SARGs and hold. |
| <p>⚠ Rwy 27 helicopter visibility reduction below RVR 5000 NA. Straight-in Rwy 27 at night, operational VGSI required, remain on or above VGSI glidepath until threshold. Circling NA north of Rwy 9-27. For inop ALS, increase LNAV Cats C/D visibility to 2 SM. Inop table does not apply to LP Cats A/B and LNAV Cat A.</p> | | |

| | | | |
|------------------------|--|---|-------------------------|
| D-ATIS 134.8 | SOCAL APP CON 119.6 363.1 (W) 124.35 279.625 (E) | LINDBERGH TOWER 118.3 338.225 | GND CON 123.9 |
|------------------------|--|---|-------------------------|



| | | |
|---|----------|---------|
| ELEV 17 | D | TDZE 17 |
| <p>TDZL/RCLS Rws 9 and 27 HIRL Rwy 9-27</p> | | |

| | | | | |
|----------------------------------|-----------------------|---|---|----------------------------|
| 2500 | SARGs | VYDDA | | |
| | | | | |
| <p>REEBO CIJHI OKAIN</p> | | | | |
| RWY 27 | 2000 | 2700 | | |
| $\leq 3.50^\circ$ | TCH 65 | 275° | | |
| 4000 | 3600 | | | |
| <p>5.2 NM 2.2 NM 3.5 NM 2 NM</p> | | | | |
| CATEGORY | A | B | C | D |
| LP MDA | 680/50 | 663 (700-1) | 680-1 $\frac{3}{4}$ | 663 (700-1 $\frac{3}{4}$) |
| LNAV MDA | 760/50 743 (800-1) | 760/55 743 (800-1) | 760-1 $\frac{7}{8}$ | 743 (800-1 $\frac{7}{8}$) |
| CIRCLING | 820-1 803 (900-1) | 820-1 $\frac{1}{4}$ 803 (900-1 $\frac{1}{4}$) | 820-2 $\frac{1}{2}$ 803 (900-2 $\frac{1}{2}$) | 940-3 923 (1000-3) |

SW-3, 14 MAY 2026 to 11 JUN 2026

SW-3, 14 MAY 2026 to 11 JUN 2026