

SW-3, 14 MAY 2026 to 11 JUN 2026

ARRIVAL ROUTE DESCRIPTION

- IMPERIAL TRANSITION (IPL.TOPGN2)
- MOMAR TRANSITION (MOMAR.TOPGN2)
- PARKER TRANSITION (PKE.TOPGN2)
- TRUE TRANSITION (TRUE.TOPGN2)

From TOPGN on track 250° to cross ISEMN at or above 6400, then on track 253° to cross ZIPPZ between 6000 and 8000, then on track 273° to cross TMCAT at 6000 and at 210K, then on track 270°. Expect RADAR vectors to ILS or LOC RWY 9 approach.

LOST COMMUNICATIONS:

In the event of lost communication: proceed direct SARGs then on the ILS or LOC RWY 9 approach.

SOCAL APP CON  
124.35 279.625  
D-ATIS  
134.8

NOTE: RADAR required.

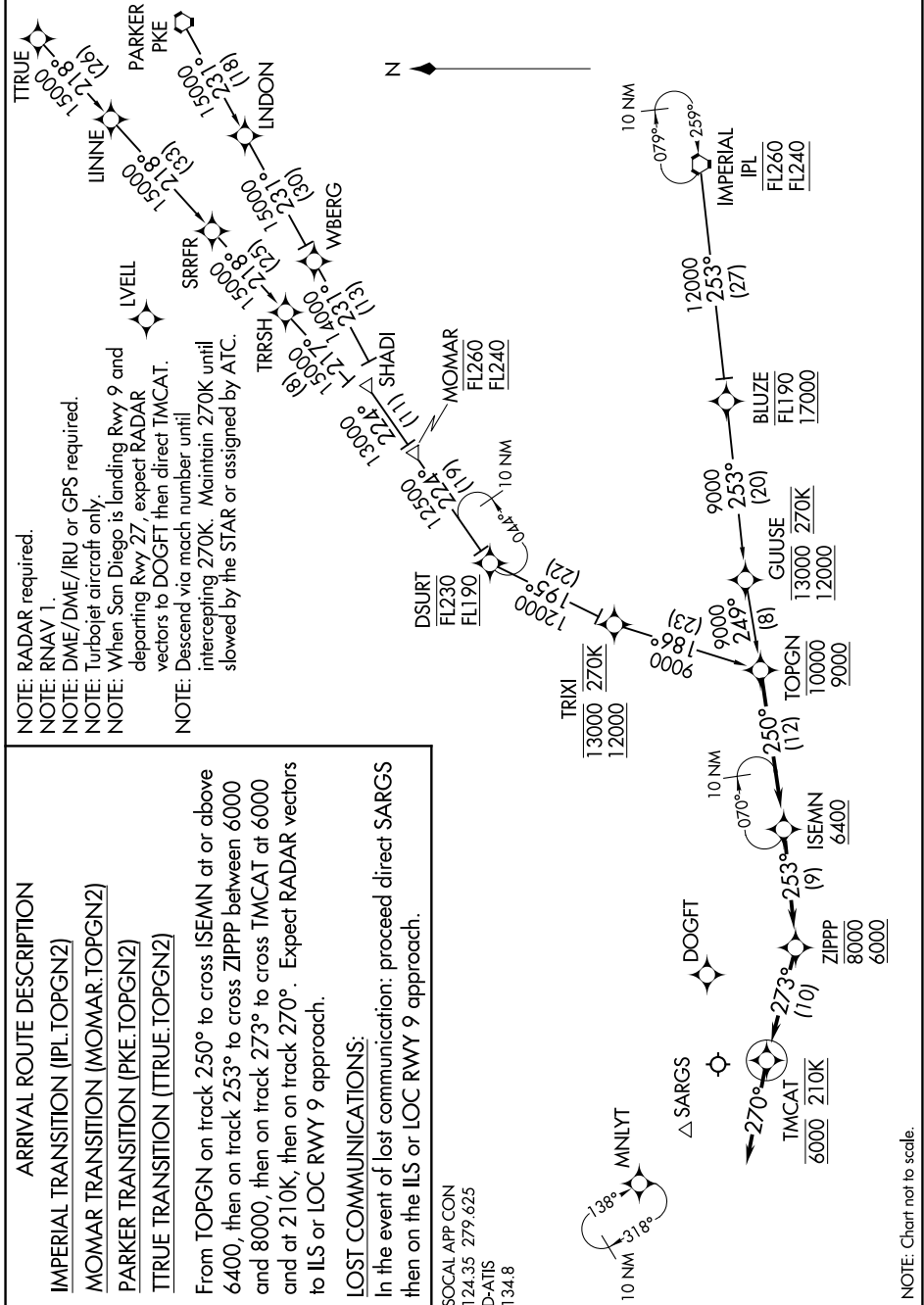
NOTE: RNAV 1.

NOTE: DME/DME/IRU or GPS required.

NOTE: Turboprop aircraft only.

NOTE: When San Diego is landing Rwy 9 and departing Rwy 27, expect RADAR vectors to DOGFT then direct TMCAT.

NOTE: Descend via mach number until intercepting 270K. Maintain 270K until slowed by the STAR or assigned by ATC.



SW-3, 14 MAY 2026 to 11 JUN 2026