

# TACAN Y RWY 29

TACAN NZY Chan 117	APCH CRS 299°	Rwy Idg 7501	TDZE 26	Arprt Elev 26
-----------------------	------------------	-----------------	------------	------------------

[USN]

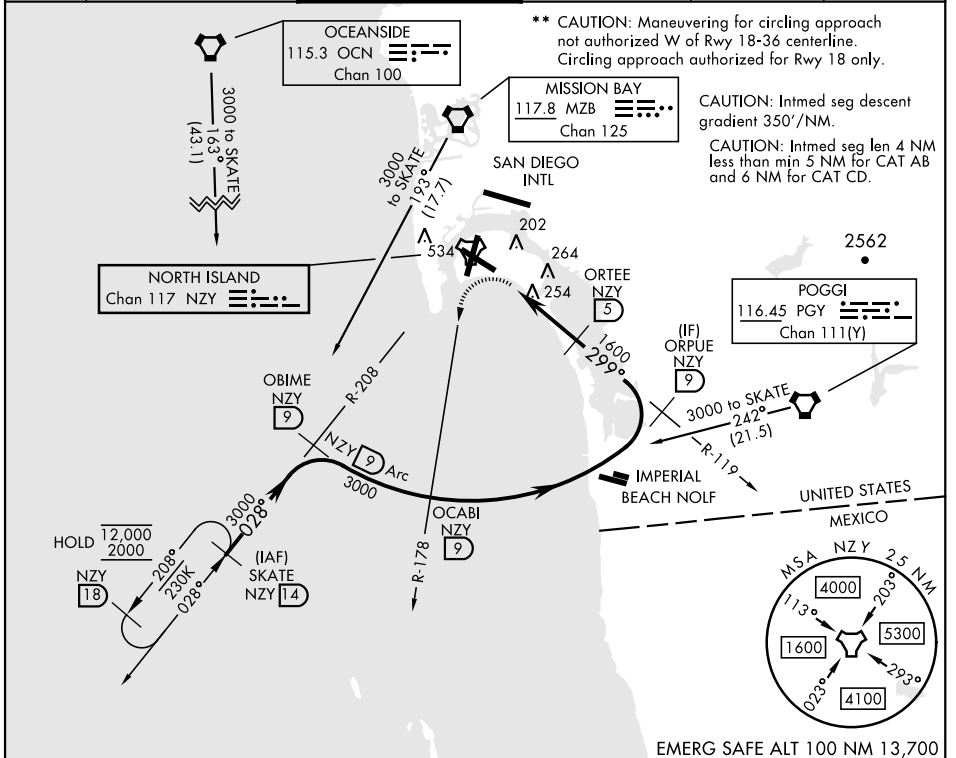
NORTH ISLAND NAS (HALSEY FIELD) (KNZY)

▼ \* When ALS inop, increase CAT AB vis to 1 mile, CAT CD vis to 1½ mile.

ALSF-1 (A1)

MISSED APPROACH: Climbing left turn to 2000 via NZY TACAN R-178 to OCABI. Arc S on NZY 9 DME arc to OBIME, then via NZY R-208 to SKATE and hold.

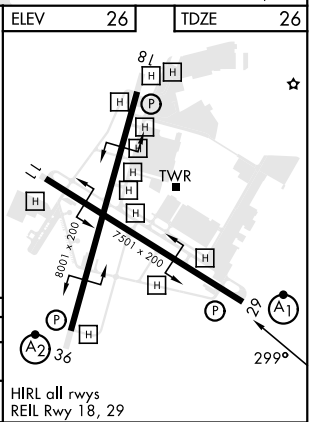
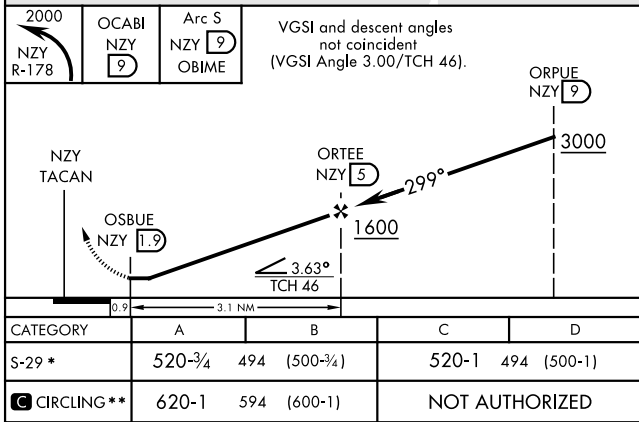
ATIS ★ 317.8	SOCAL APP CON 125.15 317.55	TOWER ★ 135.1 336.4	GND CON 118.0 360.675	CLNC DEL 128.4 288.25	PAR/ASR
-----------------	--------------------------------	------------------------	--------------------------	--------------------------	---------



\*\* CAUTION: Maneuvering for circling approach not authorized W of Rwy 18-36 centerline. Circling approach authorized for Rwy 18 only.

CAUTION: Intmed seg descent gradient 350°/NM.

CAUTION: Intmed seg len 4 NM less than min 5 NM for CAT AB and 6 NM for CAT CD.



SW-3, 14 MAY 2026 to 11 JUN 2026

SW-3, 14 MAY 2026 to 11 JUN 2026

# TACAN Y RWY 29