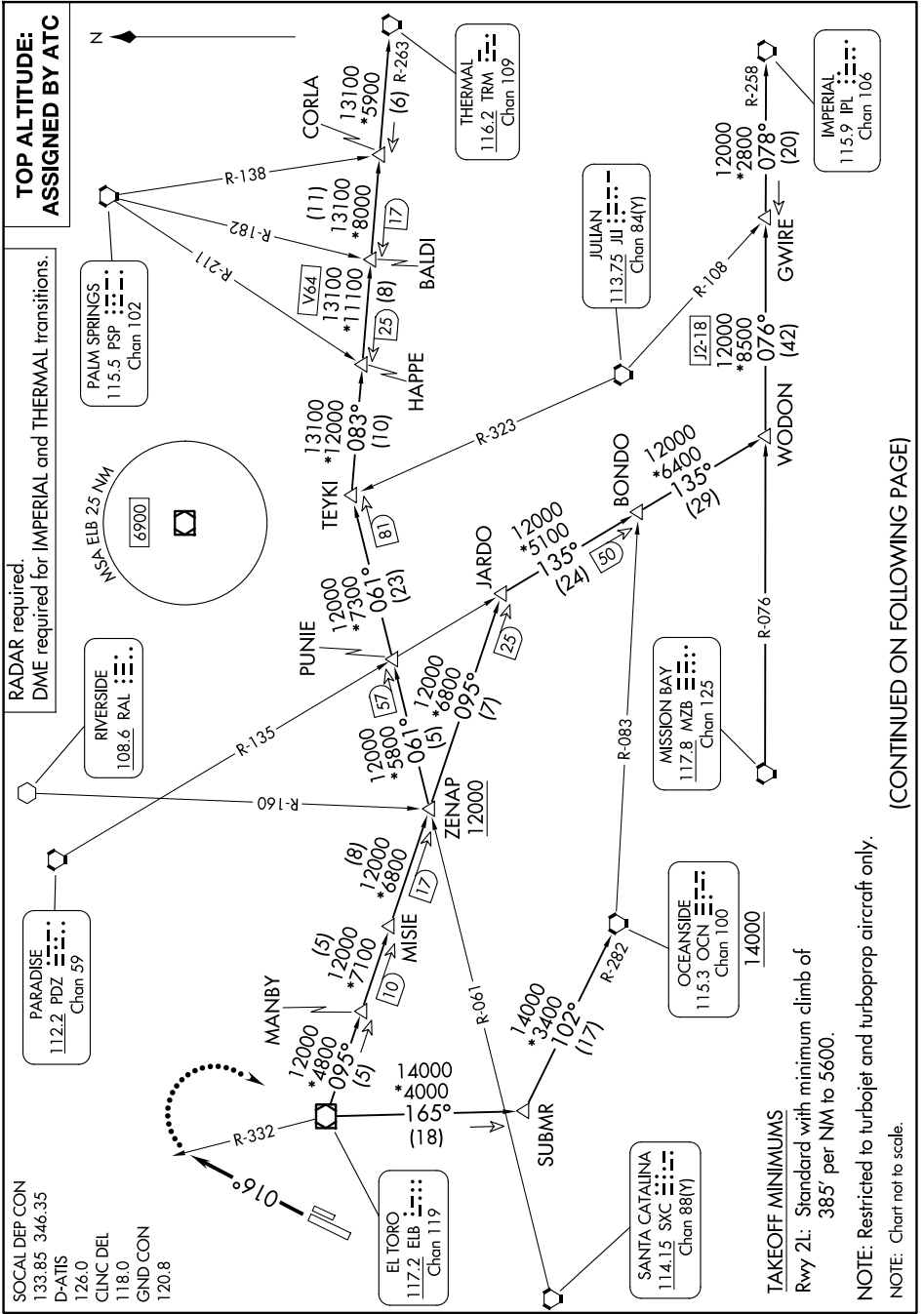


EL TORO FIVE DEPARTURE

AL-377 (FAA)

JOHN WAYNE/ORANGE COUNTY (SNA)
SANTA ANA, CALIFORNIA

SW-3, 14 MAY 2026 to 11 JUN 2026



SOCAL DEP CON
133.85 346.35
D-ATIS
126.0
CLNC DEL
118.0
GND CON
120.8

EL TORO FIVE DEPARTURE

SANTA ANA, CALIFORNIA
JOHN WAYNE/ORANGE COUNTY (SNA)

(CONTINUED ON FOLLOWING PAGE)

SW-3, 14 MAY 2026 to 11 JUN 2026

TAKEOFF MINIMUMS
Rwy 2L: Standard with minimum climb of
385' per NM to 5600.

NOTE: Restricted to turbojet and turboprop aircraft only.
NOTE: Chart not to scale.



DEPARTURE ROUTE DESCRIPTION

TAKEOFF RUNWAY 2L: Climb on heading 016° for RADAR vectors to ELB VOR/DME, thence

. . . .(transition) or (assigned route). Maintain ATC assigned altitude. Expect filed altitude ten minutes after departure.

LOST COMMUNICATIONS: If not in contact with departure control by ELB R-332, turn right direct ELB VOR/DME, climb to 7000 and proceed on assigned transition or route. Climb to filed altitude ten minutes after departure.

IMPERIAL TRANSITION (ELB5.IPL): From over ELB VOR/DME on ELB R-095 to JARDO, then on PDZ R-135 to WODON, then on MZB R-076 and IPL R-258 to GWIRE, then on IPL R-258 to IPL VORTAC.

OCEANSIDE TRANSITION (ELB5.OCN): From over ELB VOR/DME on ELB R-165 to SUBMR, then on OCN R-282 to OCN VORTAC.

THERMAL TRANSITION (ELB5.TRM): From over ELB VOR/DME on ELB R-095 to ZENAP, then on SXC R-061 to TEYKI, then on TRM R-263 to TRM VORTAC.

SW-3, 14 MAY 2026 to 11 JUN 2026

SW-3, 14 MAY 2026 to 11 JUN 2026